

E♭ Bass

VALSE TRISTE

from Arvid Järnefelt's Drama "Kuolema"

Jean SIBELIUS Op. 44

Arr. José SCHYNS

Lento



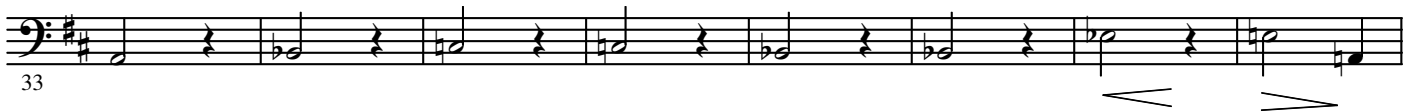
1



2



rall.



3

a tempo deciso



poco rall.



4

a tempo



2.

- E \flat Bass -

5

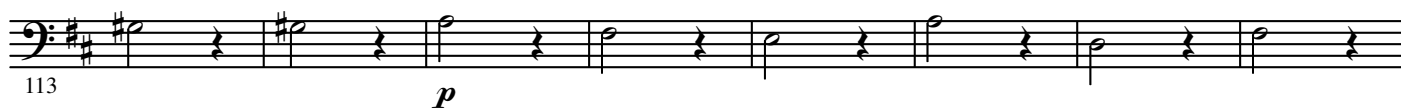
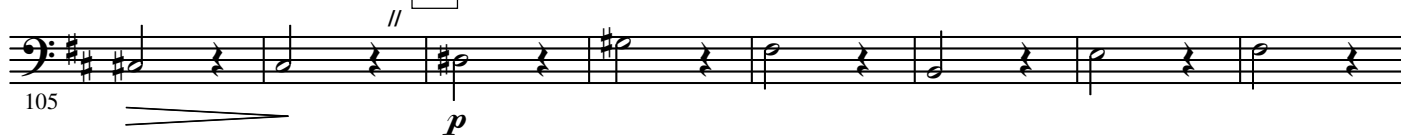


6



7

a tempo



8



9

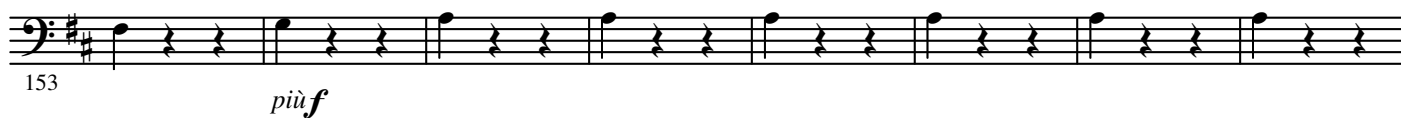
Poco risoluto



10



11



12 Più risoluto e mosso



13 Stretto



14



Lento assai

