

CANTE JONDO

E♭ Bass

Choreographic Fragments for Wind Band

Hardy MERTENS

Arr. José SCHYNS

♩ = 132
muted

f

7

13

A

20

26

31

B

36

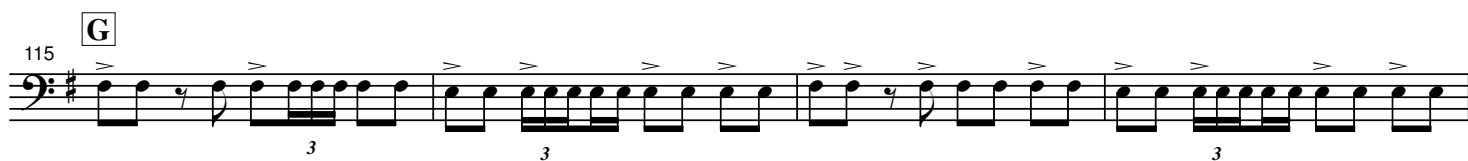
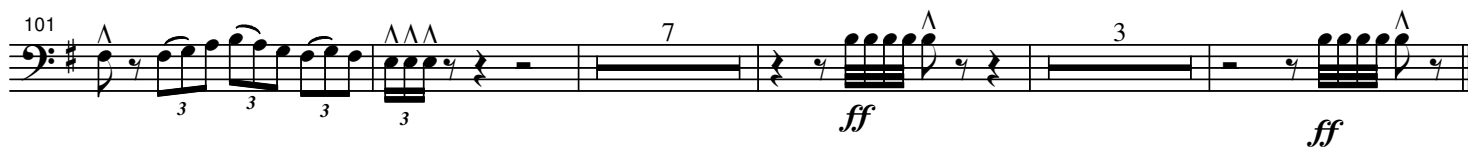
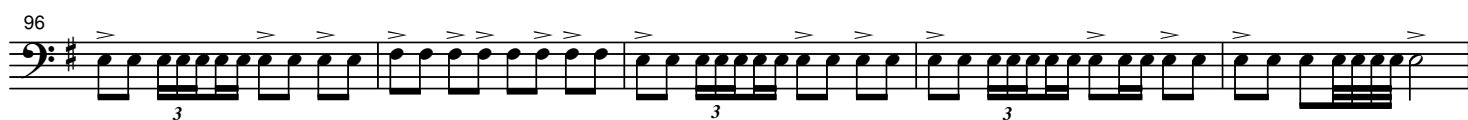
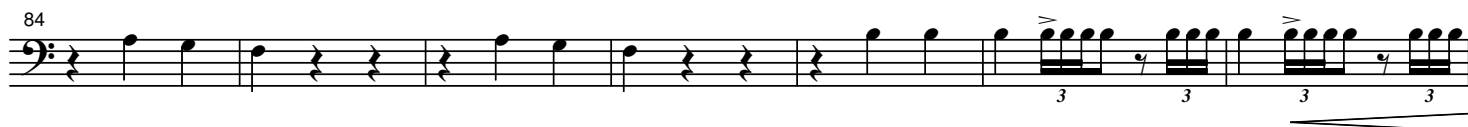
41

ff

47

C Speed up

53

D ♩ = 100

131 **H** *ff*

136 *p* *molto ritenuto* *pp* *accelerando* ♩ = 60

141 **I** ♩ = 168 *ff* 3

146 3 3 3

150 3 *p*

154 *ff* 3

159 ♩ = 60 **J** 3 3 *p* 3

163 3

167 **K** 6 *ff* 3 3

177 **L** 6 3 *mf* < *ff*

190 4

mf *ff* *ff* **M**

199

204 **N** ♩ = 144 sub.

f 3 3

210 3 3 3 3 3

216 3 3 *ff*

O 221 *p*

225

Speed up **P** ♩ = 60 ♩ = 168 second time

230 *mf* *ff* sempre accel.

235

242

Q *SING (concert pitch)*
249 *f*
EL CAM - PO, EL CAM - PO

261
QUE - DO EN SI - LEN - CIO LA GEN - TE, LA GEN - TE

268 **R**
QUI - E - TA ES - TA - BAN. POR - QUE - RE -

275 *ff*
ZA - BAN EL AN - GE - LUS.

281 *p*
AN - GE-LUS, AN - GE-LUS. A E - SO DE ME - DIA MA -

287 **S** *f*
NA - NA. VI - VA LA VIR - GEN,

293
VIR - GEN DEL RO - CI - O. VI - VA LA VIR - GEN,

300 *ff* *fff* **T** *f*
VIR - GEN DEL RO - CI - O. VI - VA LA

311 *fff* *ff* *fff*
VIR - GEN. MA - DRE DE DI - OS.

321 **U** *ff* *fff* **V** *Cadenza*
MA - DRE DE DI - OS.