

CANTE JONDO

1st B \flat Trombone

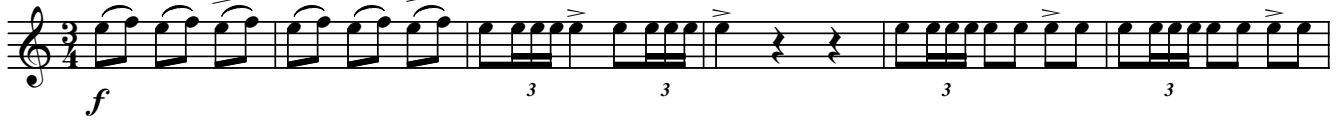
Choreographic Fragments for Wind Band

Hardy MERTENS

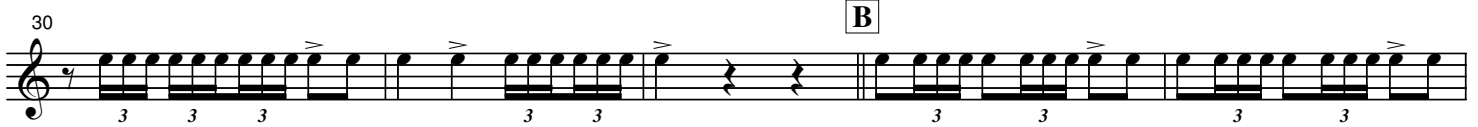
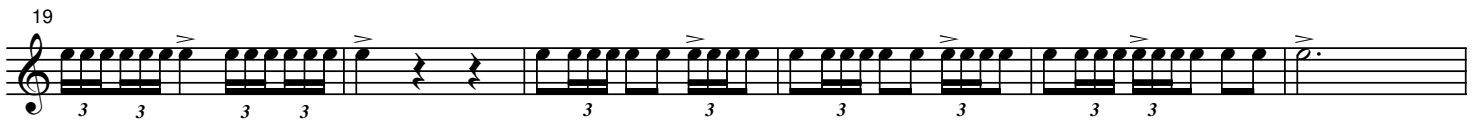
Arr. José SCHYNS

$\text{♩} = 132$

muted



A



B



ff

C Speed up



58

D $\text{♩} = 100$

64

71

E

77

83

90

F $\text{♩} = 120$

95

100

G

114

119

8

131 **H** *ff*

136 *p* *molto ritenuto* *pp* *accelerando* $\text{♩} = 60$

141 **I** $\text{♩} = 168$ *ff* 3

146 3 3 3

150 *p*

154 *ff* 3

159 $\text{♩} = 60$ **J** *p* 3 3

163 3

167 **K** 6 *ff* 3 3

177 **L** 6 3 *mf* *ff*

190 4 M

mf \leftarrow *ff* *ff* *accelerando*

Detailed description: Musical staff starting at measure 190. It begins with a whole rest followed by a '4' indicating a quadruplet of eighth notes. The staff contains several measures of eighth-note patterns with accents. Dynamics include *mf*, *ff*, and *accelerando*. A box labeled 'M' is above the staff at measure 194.

199

Detailed description: Musical staff starting at measure 199. It continues the eighth-note patterns with accents. Dynamics include *ff*.

204 N ♩ = 144

f 3 3

Detailed description: Musical staff starting at measure 204. It begins with a key signature change to one flat and a time signature change to 3/4. It features triplet markings over eighth notes. Dynamics include *f*.

210

Detailed description: Musical staff starting at measure 210. It continues the triplet eighth-note patterns. Dynamics include *f*.

216 O

ff *p*

Detailed description: Musical staff starting at measure 216. It continues the triplet eighth-note patterns. Dynamics include *ff* and *p*. A box labeled 'O' is above the staff at measure 218.

222

Detailed description: Musical staff starting at measure 222. It continues the triplet eighth-note patterns. Dynamics include *ff*.

227 Speed up

Detailed description: Musical staff starting at measure 227. It continues the triplet eighth-note patterns. Dynamics include *ff*.

232 P ♩ = 60 *sempre accel.* ♩ = 168 *second time*

mf *ff*

Detailed description: Musical staff starting at measure 232. It begins with a key signature change to two flats and a time signature change to 3/4. It features a repeat sign. Dynamics include *mf* and *ff*. A box labeled 'P' is above the staff at measure 233.

238

Detailed description: Musical staff starting at measure 238. It continues the eighth-note patterns with accents. Dynamics include *ff*.

244

Detailed description: Musical staff starting at measure 244. It continues the eighth-note patterns with accents. Dynamics include *ff*.

Q *SING (concert pitch)*

249 *f*
EL CAM - PO, EL CAM - PO

261
QUE - DO EN SI - LEN - CIO. LA GEN - TE, LA

267
GEN - TE QUI - E - TA ES - TA - BAN. POR -

273 **R** *ff*
QUE - RE - ZA - BAN EL AN - GE - LUS.

280 *p*
AN - GE-LUS, AN - GE-LUS. A E - SO DE ME - DIA MA -

287 **S** *f*
NA - NA VI - VA LA VIR - GEN, VIR - GEN

294
DEL RO - CI - O. VI - VA LA VIR - GEN,

301 *ff* *fff* **T** *f*
VIR - GEN DEL RO - CI - O. VI - VA LA

311 *fff* *ff* *fff*
VIR - GEN. MA - DRE DE DI - OS.

321 **U** *ff* *fff* **V** *Cadenza*
MA - DRE DE DI - OS.