

CANTE JONDO

2nd B \flat Trombone $\text{B}\flat$:

Choreographic Fragments for Wind Band

Hardy MERTENS

Arr. José SCHYNS

$\text{♩} = 132$
muted

f

7

13

A

19

25

B

30

35

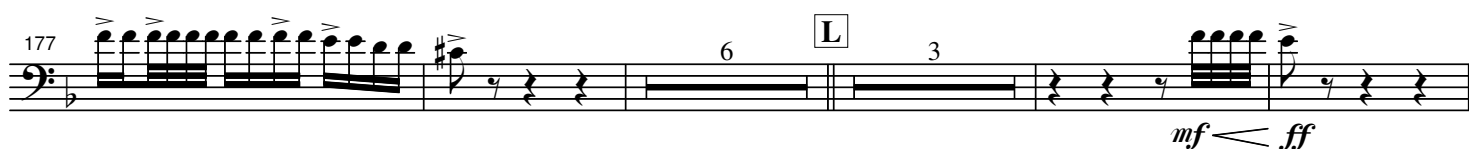
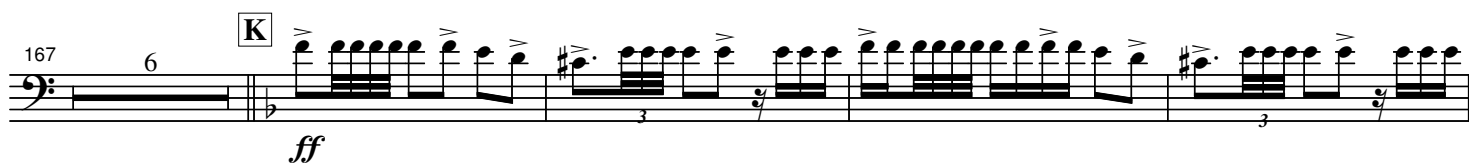
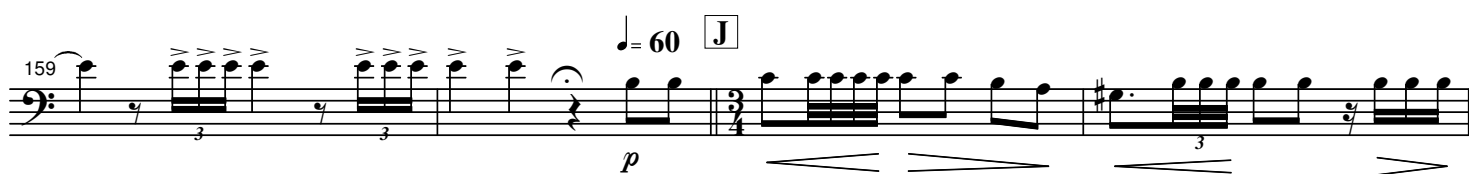
40

ff

C Speed up

46

52



190 4

mf \leq *ff* *ff* *accelerando*

199

204 **N** $\text{♩} = 144$ *f* 3 3

210 3 3 3 3 3 3

216 3 3 *ff*

O

221 *p*

225

230 **P** $\text{♩} = 60$ *sempre accel.* $\text{♩} = 168$ *second time* *mf* *ff*

235

242

Detailed description of the musical score: The score is written for a bass clef instrument. It begins at measure 190 with a 4-measure rest, followed by a series of eighth-note chords with accents. Dynamics range from *mf* to *ff*, with an *accelerando* marking. Measure 199 continues the eighth-note pattern. Measure 204 marks the start of section **N** with a tempo of $\text{♩} = 144$ and a forte (*f*) dynamic, featuring triplet eighth notes. Measures 210-216 continue with triplet patterns. Measure 216 ends with a 4-measure rest and a *ff* dynamic. Section **O** begins at measure 221 with a piano (*p*) dynamic, consisting of sixteenth-note runs. Measure 225 continues this pattern. Measure 230 marks the start of section **P** with a 'Speed up' instruction and a tempo of $\text{♩} = 60$, followed by a 'second time' section with a tempo of $\text{♩} = 168$. Dynamics *mf* and *ff* are used. Measure 235 continues the sixteenth-note runs. Measure 242 concludes the piece with a final cadence in a new key signature (one flat).

Q  *SING (concert pitch)*

249 *f*

EL CAM - PO, EL CAM - PO

261

QUE - DO EN SI - LEN - CIO. LA GEN - TE, LA

267

GEN - TE QUI - E - TA ES - TA - BAN. POR -

273 **R**

QUE - RE - ZA - BAN EL AN - GE - LUS.

280 *p*

AN - GE-LUS, AN - GE-LUS. A E - SO DE ME - DIA MA -

287 **S** *f*

NA - NA VI - VA LA VIR - GEN, VIR - GEN

294

DEL RO - CI - O. VI - VA LA VIR - GEN,

301 *ff* *fff* **T** *f*

VIR - GEN DEL RO - CI - O. VI - VA LA

311 *fff* *ff* *fff*

VIR - GEN. MA - DRE DE DI - OS.

321 **U** *ff* *fff* **V** *Cadenza*

MA - DRE DE DI - OS.

32