

SCHEHERAZADE

B \flat Euphonium b

Main Themes from Symphonic Suite

N. RIMSKY-KORSAKOV Op. 35

Arr. Yo KITANO

1. THE SEA AND SINBAD'S SHIP

Largo e maestoso

pesante

Measures 1-6 of the first system. Measure 1 starts with a forte (*ff*) dynamic. Measure 6 ends with a mezzo-forte (*mf*) dynamic. The key signature is one sharp (F#) and the time signature is 4/4.

Lento $\text{♩} = \text{♩}$

3

Recitativo

A **Allegro non troppo** $\text{♩} = 56$

Measures 14-21 of the second system. Measure 14 starts with a mezzo-forte (*mf*) dynamic. Measure 21 ends with a piano (*p*) dynamic. The key signature is one sharp (F#) and the time signature is 6/4.

B

Measures 27-31 of the third system. Measure 27 starts with a piano (*p*) dynamic. Measure 31 ends with a crescendo (*cresc.*) and a poco a poco marking.

Measures 32-36 of the fourth system. Measure 32 starts with a piano (*p*) dynamic. Measure 36 ends with a forte (*f*) dynamic.

Measures 37-41 of the fifth system. Measure 37 starts with a forte (*f*) dynamic. Measure 41 ends with a piano (*p*) dynamic.

C **Tranquillo**

Measures 42-46 of the sixth system. Measure 42 starts with a piano (*p*) dynamic. Measure 46 ends with a piano (*p*) dynamic.

cue Baritone Sax.

D

Measures 47-51 of the seventh system. Measure 47 starts with a piano (*pp*) dynamic. Measure 51 ends with a piano (*p*) dynamic.

Measures 52-56 of the eighth system. Measure 52 starts with a piano (*p*) dynamic. Measure 56 ends with a piano (*p*) dynamic.

2.

- B♭ Euphonium -

E *Play*

68 *ff*

73 **F** *marc.*

79

85 **G** 10

2. THE STORY OF THE KALANDAR PRINCE

H *Lento* 3 *Andantino* ♩ = 144

100 *Recitativo* *p*

109 *div.* *p*

117 *rit.* *fp* *accel.*

I *a tempo* (un poco più animato)

124 *rit.* *f*

131 *p* *sf* *f* *sf*

J *Allegro molto* ♩ = 144

138 *sf* *sf* *f* 3

145 *mf* *mf*

Staff 145-152: Bass clef, key of B♭ major. Measures 145-152. Dynamics: *mf* at 145, *mf* at 152. Articulation: accents (>) on measures 145, 146, 148, 152. Rhythms: eighth notes, quarter notes, and a half note. A triplet of eighth notes is in measure 148. A double bar line with a '2' above it is in measure 151.

153 *mf*

K

Staff 153-160: Bass clef, key of B♭ major. Measures 153-160. Dynamics: *mf* at 153. Articulation: accents (>) on measures 153, 155, 157, 160. Rhythms: eighth notes, quarter notes, and a half note. A triplet of eighth notes is in measure 155. A double bar line with a '2' above it is in measure 158.

161 *sf*

L

Staff 161-170: Bass clef, key of B♭ major. Measures 161-170. Dynamics: *sf* at 161. Articulation: accents (>) on measures 161, 162, 163, 164, 165, 166, 167, 168, 169, 170. Rhythms: eighth notes, quarter notes, and a half note. A triplet of eighth notes is in measure 162. A double bar line with a '3' above it is in measure 169. A double bar line with a '12' above it is in measure 170.

181 *f* *sf* *p*

M ♩ = 152

Staff 181-187: Bass clef, key of B♭ major. Measures 181-187. Dynamics: *f* at 181, *sf* at 187, *p* at 187. Articulation: accents (>) on measures 181, 182, 183, 184, 185, 186, 187. Rhythms: eighth notes, quarter notes, and a half note. A triplet of eighth notes is in measure 182. A double bar line with a '3' above it is in measure 185. A double bar line with a '3' above it is in measure 186. A key signature change to B major and a time signature change to 3/4 is in measure 187. A tempo marking '♩ = 152' is in measure 187.

188 *espressivo*

Staff 188-194: Bass clef, key of B major. Measures 188-194. Dynamics: *espressivo* at 188. Articulation: accents (>) on measures 188, 189, 190, 191, 192, 193, 194. Rhythms: eighth notes, quarter notes, and a half note. A triplet of eighth notes is in measure 189. A double bar line with a '3' above it is in measure 192.

195 *mf*

Staff 195-202: Bass clef, key of B major. Measures 195-202. Dynamics: *mf* at 195. Articulation: accents (>) on measures 195, 196, 197, 198, 199, 200, 201, 202. Rhythms: eighth notes, quarter notes, and a half note. A triplet of eighth notes is in measure 196. A double bar line with a '3' above it is in measure 199.

203 *sf* *f*

N

Staff 203-210: Bass clef, key of B major. Measures 203-210. Dynamics: *sf* at 203, *f* at 203. Articulation: accents (>) on measures 203, 204, 205, 206, 207, 208, 209, 210. Rhythms: eighth notes, quarter notes, and a half note. A triplet of eighth notes is in measure 204. A double bar line with a '2' above it is in measure 208.

210 *f*

O

Staff 210-217: Bass clef, key of B major. Measures 210-217. Dynamics: *f* at 210. Articulation: accents (>) on measures 210, 211, 212, 213, 214, 215, 216, 217. Rhythms: eighth notes, quarter notes, and a half note. A triplet of eighth notes is in measure 211. A double bar line with a '2' above it is in measure 213.

218 *p* *f*

Staff 218-225: Bass clef, key of B major. Measures 218-225. Dynamics: *p* at 218, *f* at 218. Articulation: accents (>) on measures 218, 219, 220, 221, 222, 223, 224, 225. Rhythms: eighth notes, quarter notes, and a half note. A triplet of eighth notes is in measure 219. A double bar line with a '4' above it is in measure 224.

228 *sf*

Staff 228-235: Bass clef, key of B major. Measures 228-235. Dynamics: *sf* at 228. Articulation: accents (>) on measures 228, 229, 230, 231, 232, 233, 234, 235. Rhythms: eighth notes, quarter notes, and a half note. A triplet of eighth notes is in measure 229. A double bar line with a '3' above it is in measure 232.

3. THE YOUNG PRINCE AND PRINCESS

Andantino quasi allegretto $\text{♩} = 52$

235 *p*

242 **P**

249 *mf* *p*

256 **Q** *dim.* *pp*

263 **R** 7 *pp*

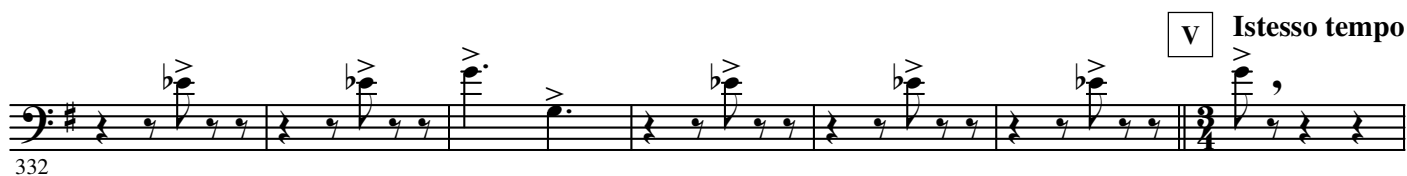
276 **S**

284 **T** 12 *poco rit.* 2 *molto rit.* 2 *a tempo* *pp*

4. FESTIVAL AT BAGDAD

Allegro molto e frenetico

304 *ff* *dim.*



6.

- B \flat Euphonium -

X



Y



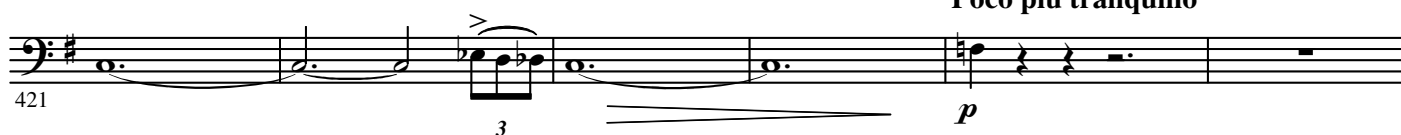
Z

Allegro non troppo maestoso $\text{♩} = 60$ 

AA



Poco più tranquillo



BB

CC

Lento

a tempo

rall.

