

B \flat Bass 

CAPRICE BRILLANT

on a theme from "Jota Aragonesa"

M. I. GLINKA
Arranged by José SCHYNS

Introduction

Grave $\text{♩} = 58$



1 *ff*

8 *ff* *p*

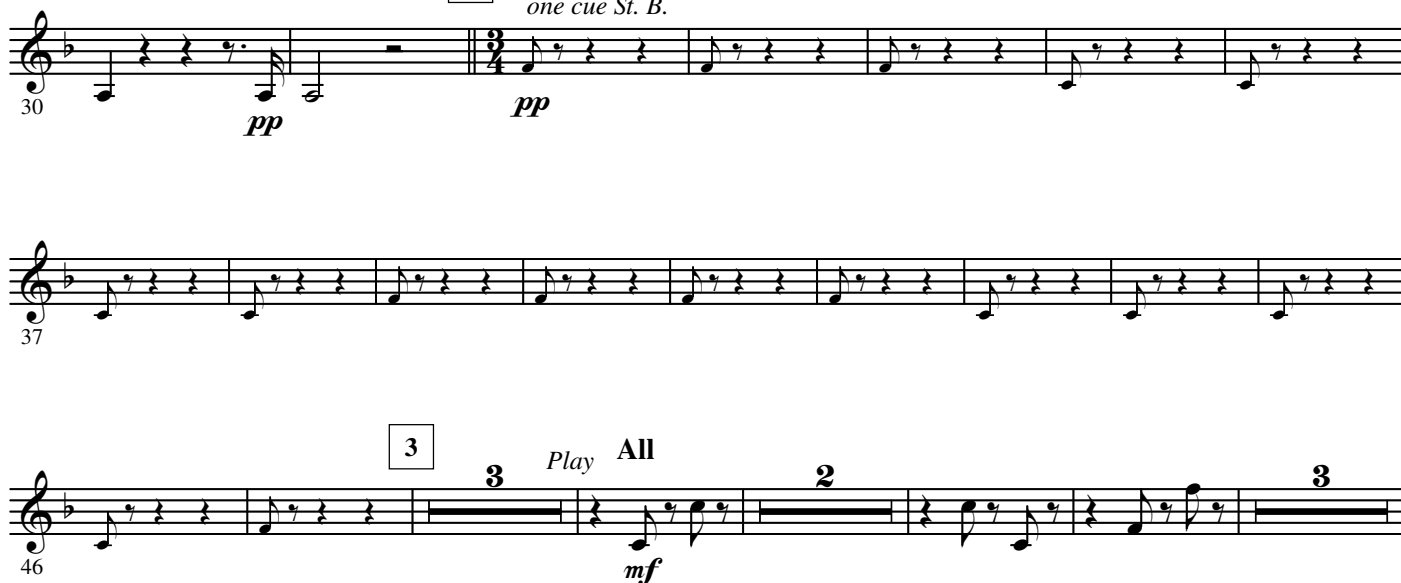
15 *f*

20 *p*

24 *p*

2 Allegro $\text{♩} = 69$ Jota Aragonesa

one cue St. B.



30 *pp* *pp*

37

46 *mf*

2.

- B \flat Bass -

4 div.

2

59

67

74

81

mf

88

96

pp

104

cresc.

112

mf

f

120

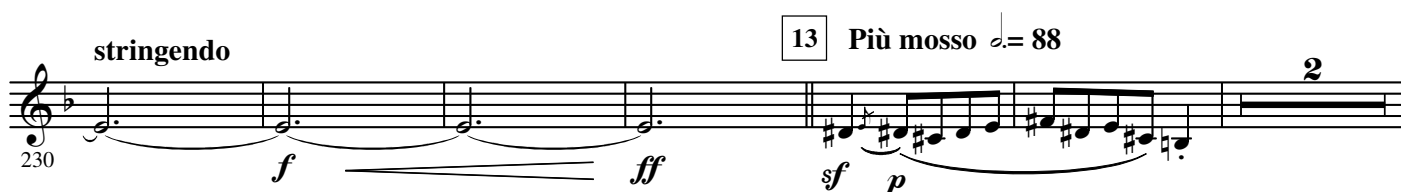
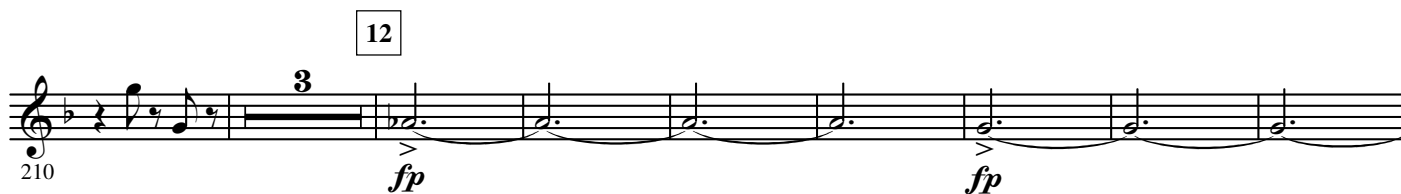
ff

127

7

Detailed description: This musical score is for a B-flat Bass instrument, spanning measures 59 to 127. The key signature has one flat (B-flat). The score is divided into sections by measure numbers and dynamic markings. Section 1 (measures 59-66) begins with a fermata over measure 60, marked with a '2' above it. Section 2 (measures 67-73) consists of eighth-note chords. Section 3 (measures 74-80) continues with eighth-note chords. Section 4 (measures 81-87) starts with a fermata over measure 81, marked with a '5' above it, and includes a mezzo-forte (mf) dynamic. Section 5 (measures 88-95) features a repeat sign over measures 90-91. Section 6 (measures 96-103) begins with a fermata over measure 96, marked with a '6' above it, and includes a pianissimo (pp) dynamic. Section 7 (measures 104-111) consists of triplet eighth notes, marked with a crescendo (cresc.) dynamic. Section 8 (measures 112-119) continues with triplet eighth notes, marked with mezzo-forte (mf) and forte (f) dynamics. Section 9 (measures 120-126) continues with triplet eighth notes, marked with fortissimo (ff) dynamic. Section 10 (measures 127) ends with a final measure marked with a '7' above it.

8 Più animato $\text{♩} = 76$



4.

- B \flat Bass -

238 *mf* *sf* *mf* *sf*

246 *f* *ff*

253 *sf* *sf* *p*

263 *mf* *sf* *mf* *sf* *f*

271 *ff* *sf*

279 *ff* *ff*

293

300 *stringendo*

307

314

14

15

16

2

3

6

3

G P. 17 Tempo I° (♩ = 69)



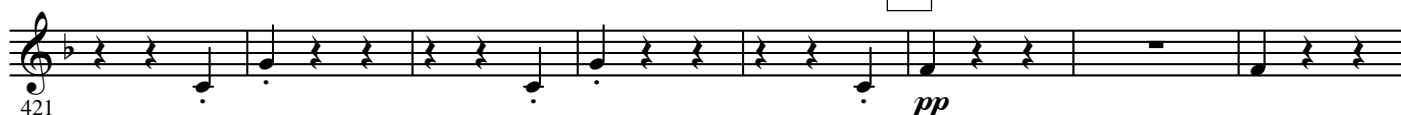
6.

- B \flat Bass -

21



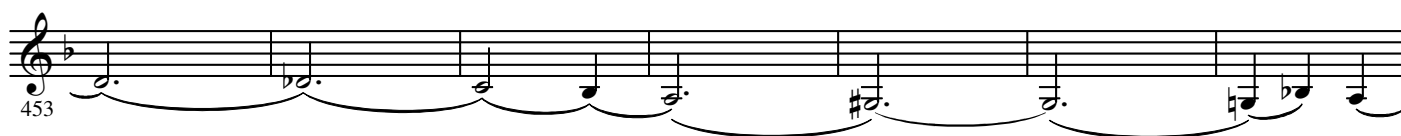
22



23



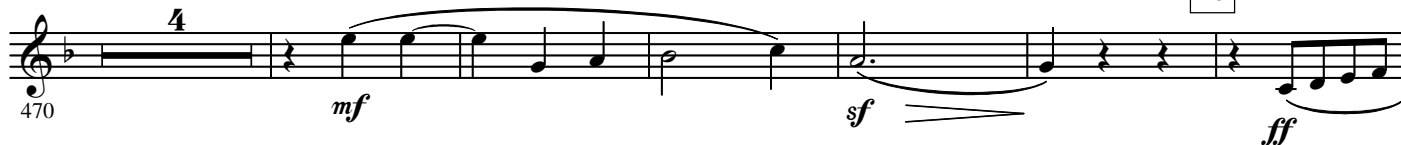
24



25



26



27

494

ff

8

f

ff

508

28

516

523

G. P.

530

ff

sf