

B $\flat$  Bass

# Loin de Paname

from "Faubourg 36"  
Wind Band

Reinhardt Wagner

arr. : Roland Smeets

un poco Rubato  $\text{♩} = 56$

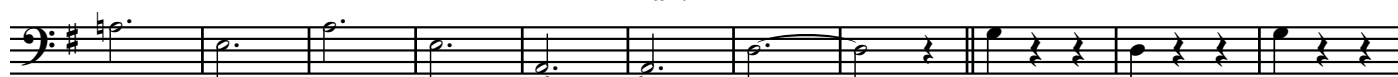
A



à déf. Bass Cl. *p*

rall.

a tempo giusto  $\text{♩} = 60$



90

poco rall. a tempo

*mf*

99

108

**D**

117

*cresc.*

126

rall. a tempo poco più mosso  $\text{♩} = 63$

*f*

135

144

**E**

153

1 2

rall.

162

più mosso  $\text{♩} = 72$