

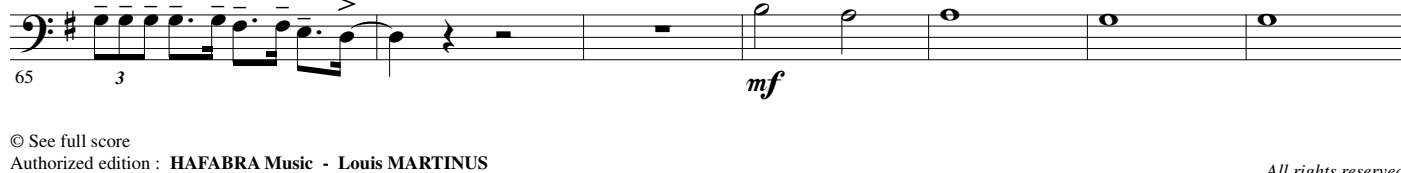
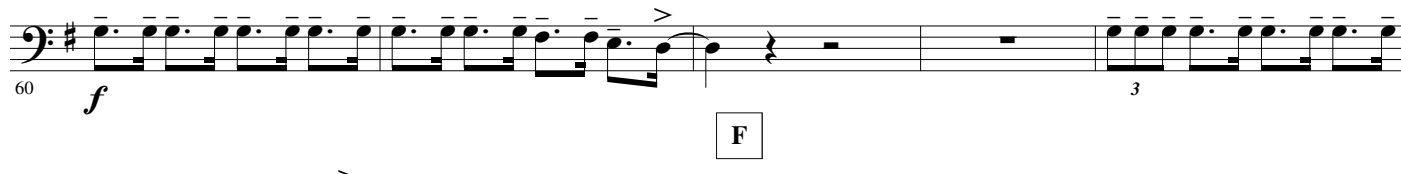
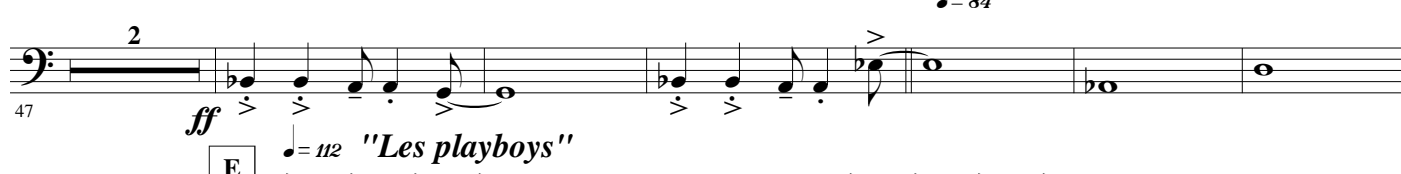
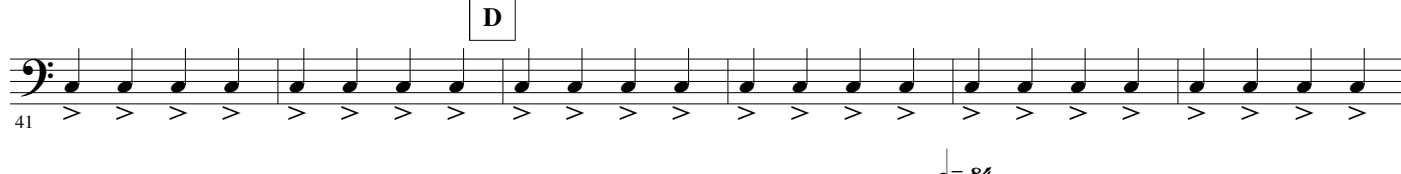
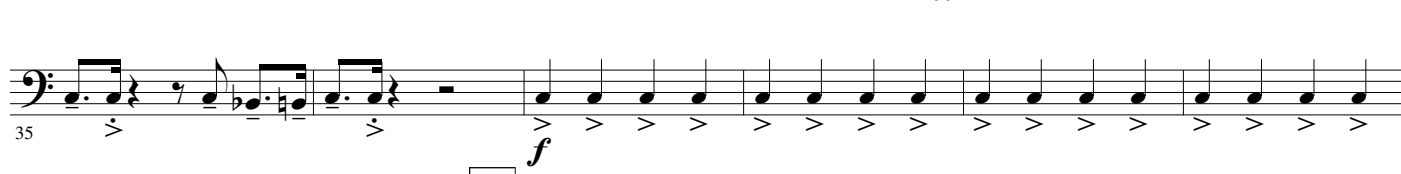
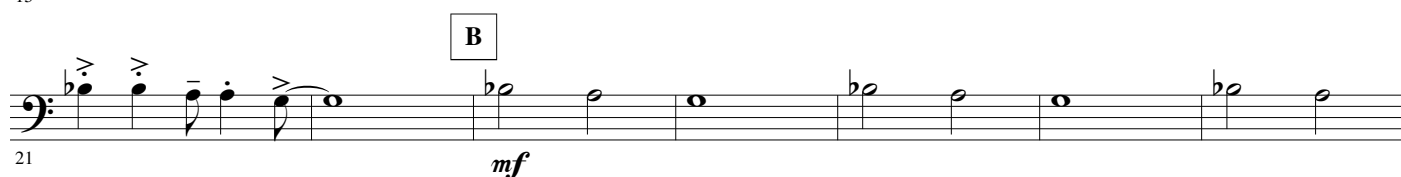
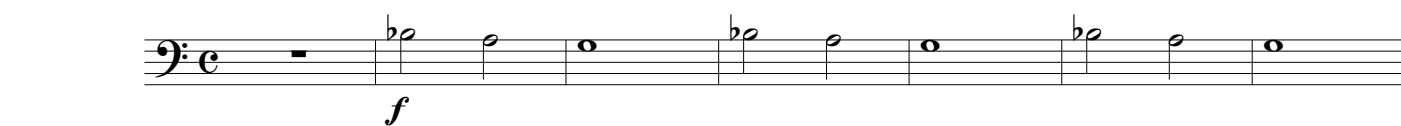
DUTRONC

B \flat Trombone 3

Jacques DUTRONC

Arr. Maxime LEGAULOIS

$\text{♩} = 168$ "Et moi et moi et moi"



72 G

72 80

f *mf*

Staff 72-80: Bass clef, key of D major. Measures 72-80. Measure 72 has a whole note D. Measures 73-74 have whole notes E and F. Measure 75 has a half note G and a half note A. Measure 76 has a quarter note B and a quarter note C. Measure 77 has a quarter note D and a quarter note E. Measure 78 has a quarter note F and a quarter note G. Measure 79 has a quarter note A and a quarter note B. Measure 80 has a quarter note C and a quarter note D. Dynamics: *f* at measure 75, *mf* at measure 78. Markings: Accents on measures 75, 76, 77, 78, 79, 80. A box labeled 'G' is above measure 77. A fermata is over measures 78-79.

81 H

81 88

mf

Staff 81-88: Bass clef, key of D major. Measures 81-88. Measure 81 has a quarter note D and a quarter note E. Measure 82 has a quarter note F and a quarter note G. Measure 83 has a quarter note A and a quarter note B. Measure 84 has a quarter note C and a quarter note D. Measure 85 has a quarter note E and a quarter note F. Measure 86 has a quarter note G and a quarter note A. Measure 87 has a quarter note B and a quarter note C. Measure 88 has a quarter note D and a quarter note E. Dynamics: *mf* at measure 84. Markings: Accents on measures 81, 82, 83, 84, 85, 86, 87, 88. A box labeled 'H' is above measure 84. A fermata is over measures 85-86.

89

89 95

f

Staff 89-95: Bass clef, key of D major. Measures 89-95. Measure 89 has a whole note D. Measure 90 has a whole note E. Measure 91 has a whole note F. Measure 92 has a whole note G. Measure 93 has a whole note A. Measure 94 has a whole note B. Measure 95 has a whole note C. Dynamics: *f* at measure 89. Markings: Accents on measures 89, 90, 91, 92, 93, 94, 95. A fermata is over measures 94-95.

96 I

96 102

mf *f*

Staff 96-102: Bass clef, key of D major. Measures 96-102. Measure 96 has a quarter note D and a quarter note E. Measure 97 has a quarter note F and a quarter note G. Measure 98 has a quarter note A and a quarter note B. Measure 99 has a quarter note C and a quarter note D. Measure 100 has a quarter note E and a quarter note F. Measure 101 has a quarter note G and a quarter note A. Measure 102 has a quarter note B and a quarter note C. Dynamics: *mf* at measure 96, *f* at measure 100. Markings: Accents on measures 96, 97, 98, 99, 100, 101, 102. A box labeled 'I' is above measure 96. A fermata is over measures 101-102.

103

103 108

Staff 103-108: Bass clef, key of D major. Measures 103-108. Measure 103 has a quarter note D and a quarter note E. Measure 104 has a quarter note F and a quarter note G. Measure 105 has a quarter note A and a quarter note B. Measure 106 has a quarter note C and a quarter note D. Measure 107 has a quarter note E and a quarter note F. Measure 108 has a quarter note G and a quarter note A. Dynamics: *f* at measure 103. Markings: Accents on measures 103, 104, 105, 106, 107, 108. A fermata is over measures 107-108.

109 J ♩ = 138 "J'aime les filles"

109 114

f *mf*

Staff 109-114: Bass clef, key of D major. Measures 109-114. Measure 109 has a quarter note D and a quarter note E. Measure 110 has a quarter note F and a quarter note G. Measure 111 has a quarter note A and a quarter note B. Measure 112 has a quarter note C and a quarter note D. Measure 113 has a quarter note E and a quarter note F. Measure 114 has a quarter note G and a quarter note A. Dynamics: *f* at measure 109, *mf* at measure 113. Markings: Accents on measures 109, 110, 111, 112, 113, 114. A box labeled 'J' is above measure 109. A fermata is over measures 113-114.

115 K

115 122

mf

Staff 115-122: Bass clef, key of D major. Measures 115-122. Measure 115 has a quarter note D and a quarter note E. Measure 116 has a quarter note F and a quarter note G. Measure 117 has a quarter note A and a quarter note B. Measure 118 has a quarter note C and a quarter note D. Measure 119 has a quarter note E and a quarter note F. Measure 120 has a quarter note G and a quarter note A. Measure 121 has a quarter note B and a quarter note C. Measure 122 has a quarter note D and a quarter note E. Dynamics: *mf* at measure 115. Markings: Accents on measures 115, 116, 117, 118, 119, 120, 121, 122. A box labeled 'K' is above measure 115. A fermata is over measures 121-122.

123

123 128

Staff 123-128: Bass clef, key of D major. Measures 123-128. Measure 123 has a quarter note D and a quarter note E. Measure 124 has a quarter note F and a quarter note G. Measure 125 has a quarter note A and a quarter note B. Measure 126 has a quarter note C and a quarter note D. Measure 127 has a quarter note E and a quarter note F. Measure 128 has a quarter note G and a quarter note A. Dynamics: *f* at measure 123. Markings: Accents on measures 123, 124, 125, 126, 127, 128. A fermata is over measures 127-128.

129 L

129 134

mf

Staff 129-134: Bass clef, key of D major. Measures 129-134. Measure 129 has a quarter note D and a quarter note E. Measure 130 has a quarter note F and a quarter note G. Measure 131 has a quarter note A and a quarter note B. Measure 132 has a quarter note C and a quarter note D. Measure 133 has a quarter note E and a quarter note F. Measure 134 has a quarter note G and a quarter note A. Dynamics: *mf* at measure 129. Markings: Accents on measures 129, 130, 131, 132, 133, 134. A box labeled 'L' is above measure 129. A fermata is over measures 133-134.

135

135 140

f

Staff 135-140: Bass clef, key of D major. Measures 135-140. Measure 135 has a quarter note D and a quarter note E. Measure 136 has a quarter note F and a quarter note G. Measure 137 has a quarter note A and a quarter note B. Measure 138 has a quarter note C and a quarter note D. Measure 139 has a quarter note E and a quarter note F. Measure 140 has a quarter note G and a quarter note A. Dynamics: *f* at measure 135. Markings: Accents on measures 135, 136, 137, 138, 139, 140. A fermata is over measures 139-140.

140 M

140 145

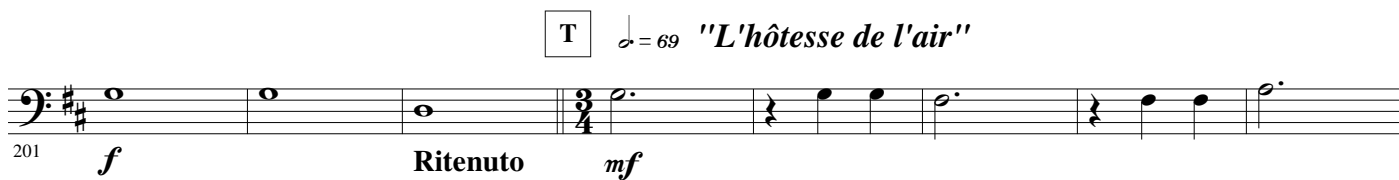
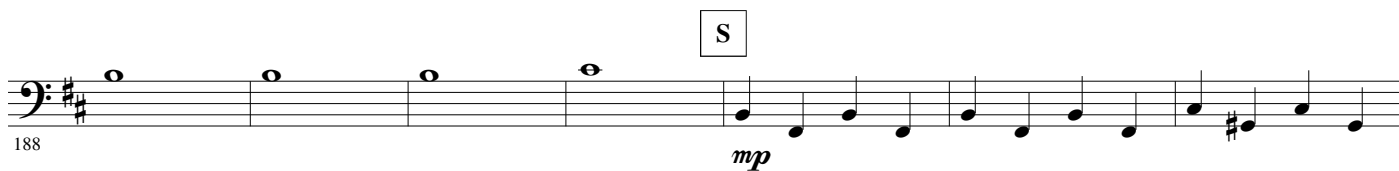
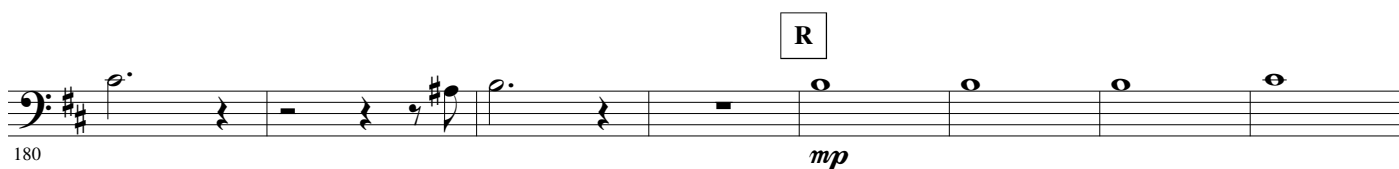
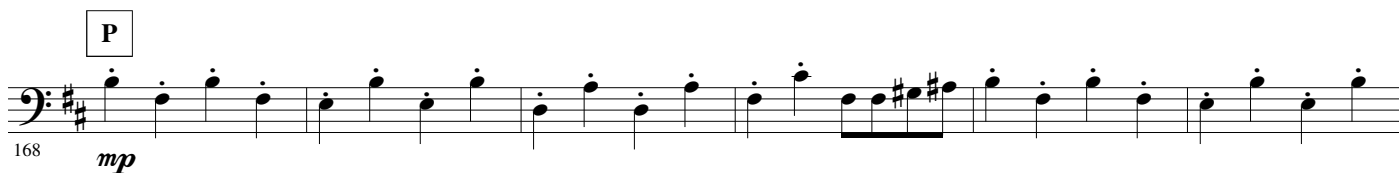
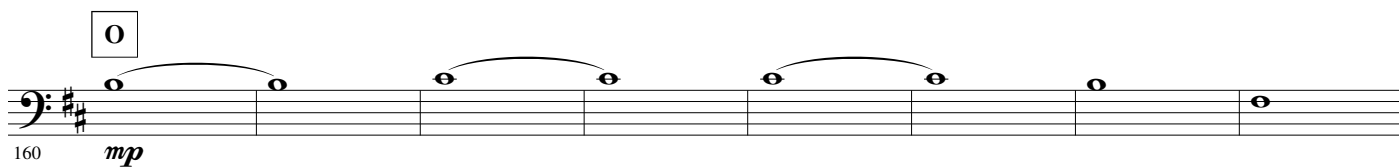
Staff 140-145: Bass clef, key of D major. Measures 140-145. Measure 140 has a quarter note D and a quarter note E. Measure 141 has a quarter note F and a quarter note G. Measure 142 has a quarter note A and a quarter note B. Measure 143 has a quarter note C and a quarter note D. Measure 144 has a quarter note E and a quarter note F. Measure 145 has a quarter note G and a quarter note A. Dynamics: *f* at measure 140. Markings: Accents on measures 140, 141, 142, 143, 144, 145. A box labeled 'M' is above measure 140. A fermata is over measures 144-145.

145 N ♩ = 69

145 150

mf

Staff 145-150: Bass clef, key of D major. Measures 145-150. Measure 145 has a quarter note D and a quarter note E. Measure 146 has a quarter note F and a quarter note G. Measure 147 has a quarter note A and a quarter note B. Measure 148 has a quarter note C and a quarter note D. Measure 149 has a quarter note E and a quarter note F. Measure 150 has a quarter note G and a quarter note A. Dynamics: *mf* at measure 145. Markings: Accents on measures 145, 146, 147, 148, 149, 150. A box labeled 'N' is above measure 145. A fermata is over measures 149-150.

"Il est cinq heures, Paris s'éveille"

227 *mf*

236 *f*

V ♩ = 92 *ff* *mf*

♩ = 69 **W** *mf*

263

271 *mf*

279 *f* **X** *f*

286

294 *mf*

302 *ff*