

B $\flat$  Euphonium

# A Kind of Magic

Roger Taylor  
arr. : Roland Smeets

*mp*

**A** 7 *mp* **B** 7 *mf* **C**

25

**D** 7 **E** 3 *mf* 2

31

**F**

46

**G** *mf* 3

52

**H**

58

**I**

64

2 *mf* 3 **J** 8 **K** *f*

70

L



86



92

M



99

N



105

*mf**f*

O



114

P

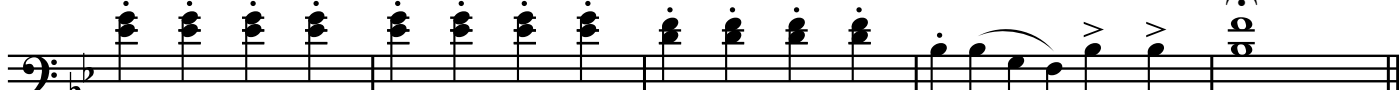


122

Q



128

*molto rit.*

134