

SLOW



1 FAST



2



3



4



5



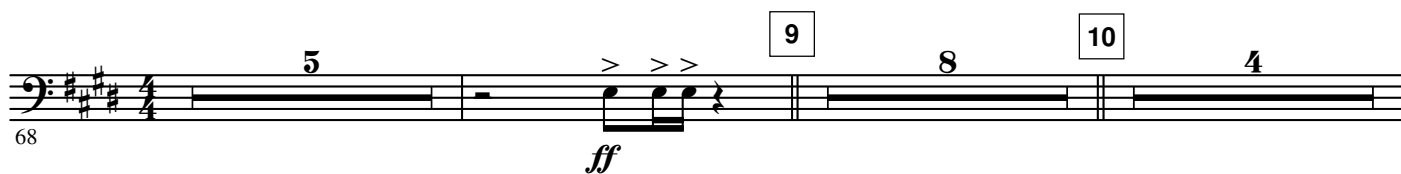
6



7



8



11

(Three times)



12

SLOW



13

FAST



14



15



124



Staff 124-128: Bass clef, key of E \flat major (three sharps). The staff contains six measures of eighth-note patterns. The first four measures are in 7/8 time, and the last two are in 6/8 time. The eighth measure ends with a double bar line.

129

16



Staff 129-133: Bass clef, key of E \flat major. The staff contains five measures. The first two measures are in 7/8 time, and the last three are in 4/4 time. The fifth measure ends with a double bar line.

134



Staff 134-138: Bass clef, key of E \flat major. The staff contains five measures of eighth-note patterns in 4/4 time. The fifth measure ends with a double bar line.

139

17



Staff 139-143: Bass clef, key of E \flat major. The staff contains five measures of eighth-note patterns in 4/4 time. The fifth measure ends with a double bar line.

144

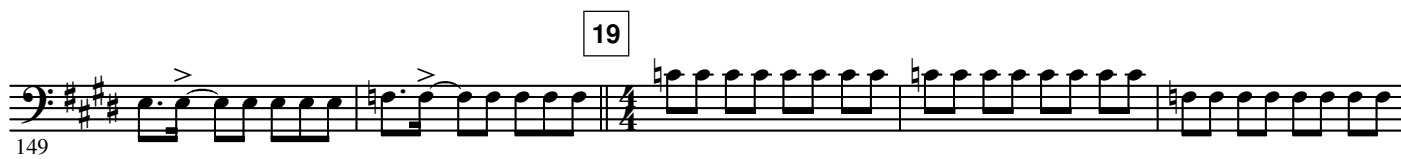
18



Staff 144-148: Bass clef, key of E \flat major. The staff contains five measures. The first four measures are in 4/4 time, and the last measure is in 7/8 time. The fifth measure ends with a double bar line.

149

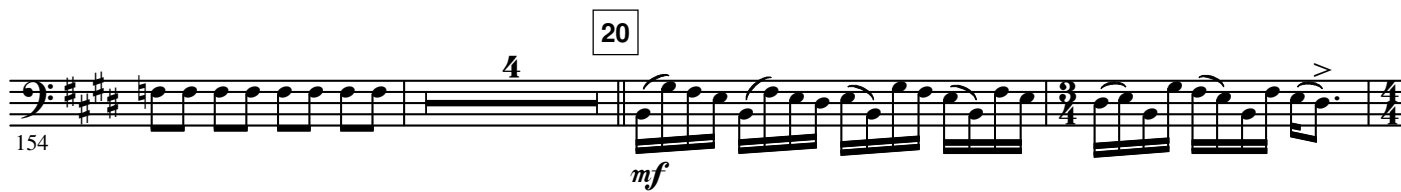
19



Staff 149-153: Bass clef, key of E \flat major. The staff contains five measures. The first two measures are in 7/8 time, and the last three are in 4/4 time. The fifth measure ends with a double bar line.

154

20

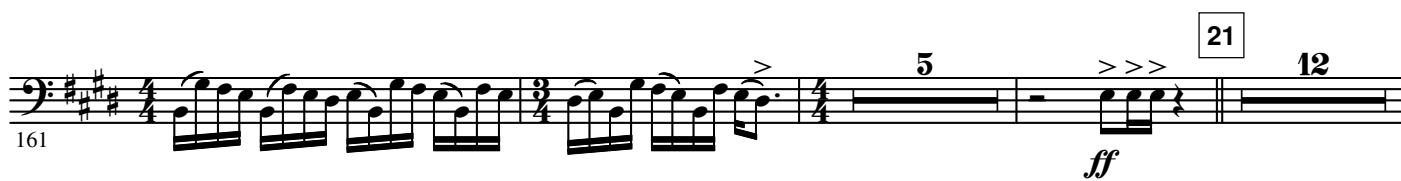


Staff 154-160: Bass clef, key of E \flat major. The staff contains five measures. The first measure is in 4/4 time, followed by a measure with a whole note and a '4' above it. The next two measures are in 3/4 time, and the last measure is in 4/4 time. The fifth measure ends with a double bar line. The dynamic *mf* is indicated below the staff.

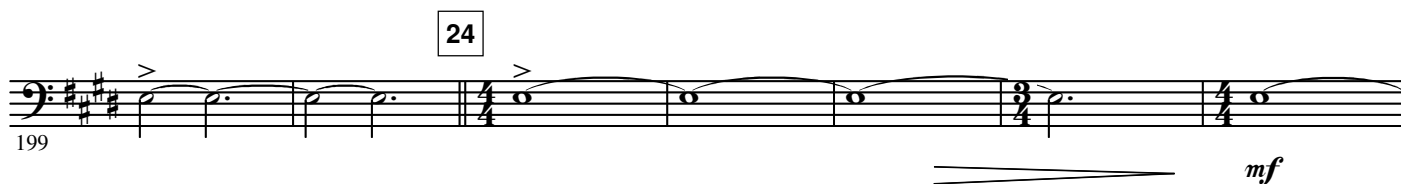
161

21

12



Staff 161-173: Bass clef, key of E \flat major. The staff contains five measures. The first two measures are in 4/4 time, followed by a measure with a whole note and a '5' above it. The next two measures are in 4/4 time, and the last measure is in 4/4 time. The fifth measure ends with a double bar line. The dynamic *ff* is indicated below the staff.

22 (Six times)**23** SLOW

SLOW DOWN

25 VERY SLOW**26** FAST