

**SLOW**

1 *ff*

**1 FAST**

9 *mf*

14

**2**

19

**3**

24

29

**4**

34

39

**5**

44

**6**

49

**7**

55

**4**

8

64 *mf*

5 9 8 10 4

68 *ff*

11 (Three times)

86 *p*

91

12 SLOW

96 *ff*

13 FAST

104 *mf*

109

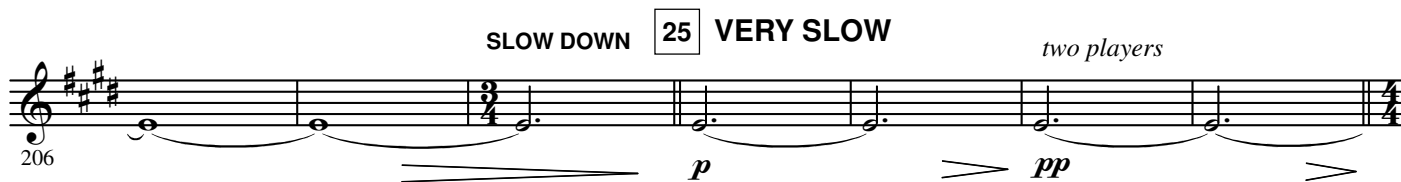
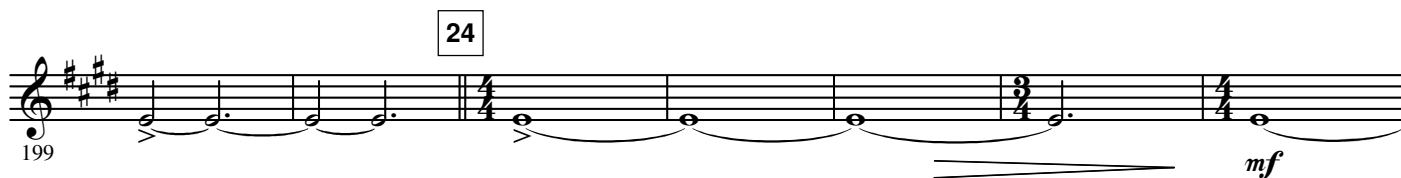
14

114

15

119



**22** (Six times)**23** SLOW**26** FAST