

SLOW



1 FAST



2



3



4



5



6



7



8

64

mf

5

div.

9

8

10

4

68

ff

11 div. (Three times)

86

p

91

12 SLOW

96

ff

13 FAST

104

mf

109

14

114

15

119

124

Staff 124-128: Bass clef, key of D major (two sharps). The staff contains a continuous eighth-note pattern. Measures 124-127 are in 7/8 time, and measure 128 is in 6/8 time. The pattern consists of eighth notes with stems pointing down, alternating between D4 and E4.

129

16

Staff 129-133: Bass clef, key of D major. Measures 129-132 are in 7/8 time, and measure 133 is in 4/4 time. The pattern continues with eighth notes, but includes some beamed eighth notes and rests. Measure 133 has a final quarter rest.

134

Staff 134-138: Bass clef, key of D major. Measures 134-138 are in 7/8 time. The pattern continues with eighth notes, including some beamed eighth notes and rests.

139

17

Staff 139-143: Bass clef, key of D major. Measures 139-143 are in 7/8 time. The pattern continues with eighth notes, including some beamed eighth notes and rests.

144

18

Staff 144-148: Bass clef, key of D major. Measures 144-148 are in 7/8 time. The pattern continues with eighth notes, including some beamed eighth notes and rests.

149

19

Staff 149-153: Bass clef, key of D major. Measures 149-153 are in 7/8 time. The pattern continues with eighth notes, including some beamed eighth notes and rests.

154

20

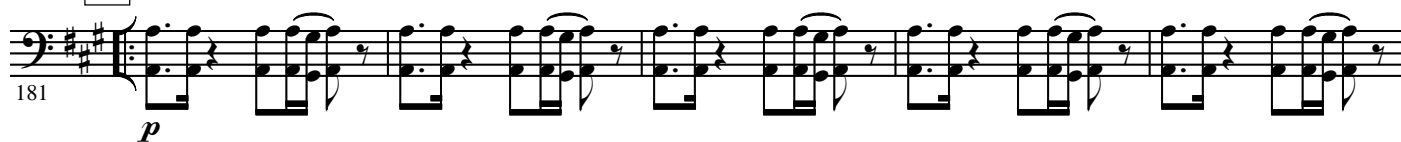
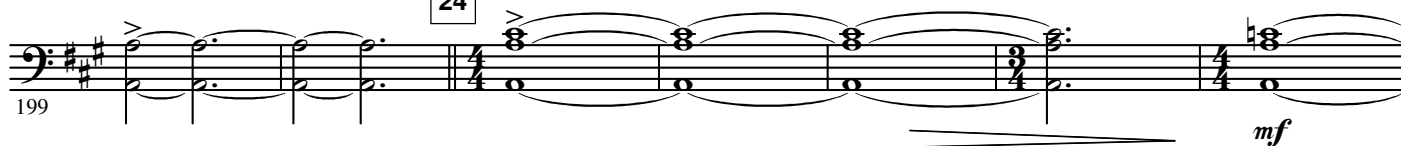
Staff 154-160: Bass clef, key of D major. Measures 154-160 are in 7/8 time. The pattern continues with eighth notes, including some beamed eighth notes and rests. Measure 154 has a final quarter rest. Measure 155 has a 4-measure rest. Measure 156 has a 3-measure rest. Measure 157 has a 4-measure rest. Measure 158 has a 4-measure rest. Measure 159 has a 4-measure rest. Measure 160 has a 4-measure rest. The dynamic *mf* is indicated below measure 155.

161

21

12

Staff 161-172: Bass clef, key of D major. Measures 161-172 are in 7/8 time. The pattern continues with eighth notes, including some beamed eighth notes and rests. Measure 161 has a final quarter rest. Measure 162 has a 5-measure rest. Measure 163 has a 5-measure rest. Measure 164 has a 5-measure rest. Measure 165 has a 5-measure rest. Measure 166 has a 5-measure rest. Measure 167 has a 5-measure rest. Measure 168 has a 5-measure rest. Measure 169 has a 5-measure rest. Measure 170 has a 5-measure rest. Measure 171 has a 5-measure rest. Measure 172 has a 5-measure rest. The dynamic *ff* is indicated below measure 165. The word *div.* is written above measure 165. Measure 171 has a final quarter rest.

22 div. (Six times)**23** SLOW**24**

SLOW DOWN

25 VERY SLOW**26** FAST