

B \flat Bass

The Ruler of the Spirits

Overture

Carl Maria von WEBER Op. 27

Arranged by José SCHYNS

Presto

1 *ff* *stacc.*

6

11

A 5

20 *pp*

27

33 *cresc.* *f*

C

39 *ff*

44

D

49

54

59

2.

- B \flat Bass -

64 E *pp*

70

76

F 82

88

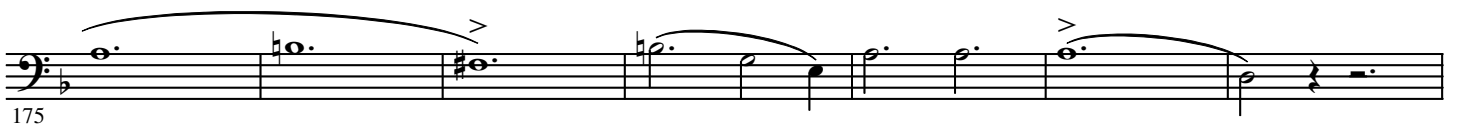
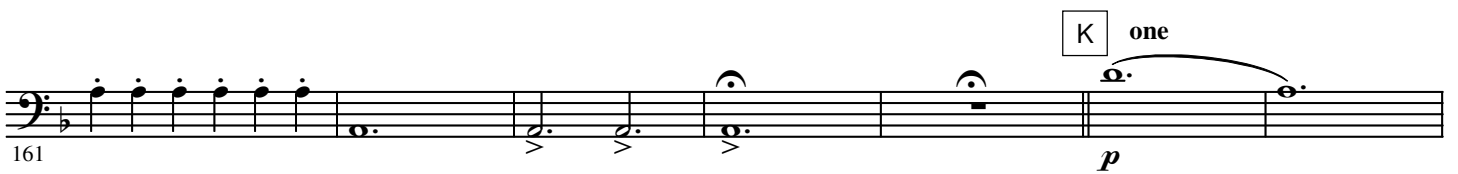
94 G *pp*

100

106 *cresc.*

111 *f* *ff*

H 116



4.

- B. Bass -

L **All**

182 *ff*

187

M

194 *pp*

N

200 *cresc.* *mf*

207

O

212 *cresc.* *f* *cresc.*

217 *ff* *cresc.*

P

222 *fff*

227

Q

232

237

242