

# DANSE MACABRE

Symphonic poem

Camille SAINT-SAËNS Op. 40

Arranged by José SCHYNS

B $\flat$  Trombone 1



Moderato waltz tempo

**A** 17 **B** 15 Muted cue Harp

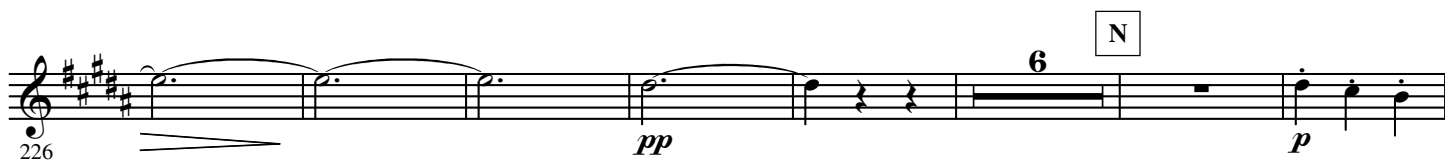
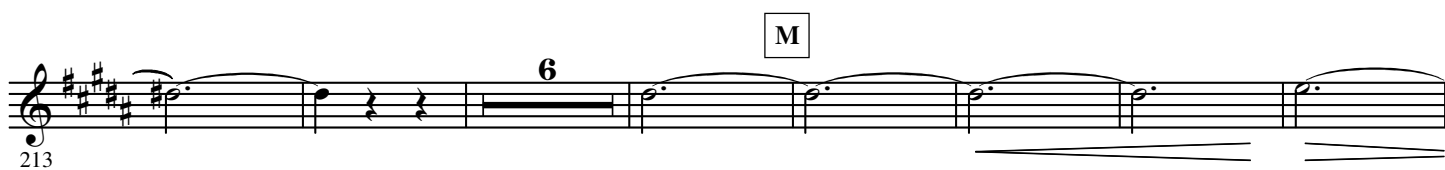
**C** Play **D**

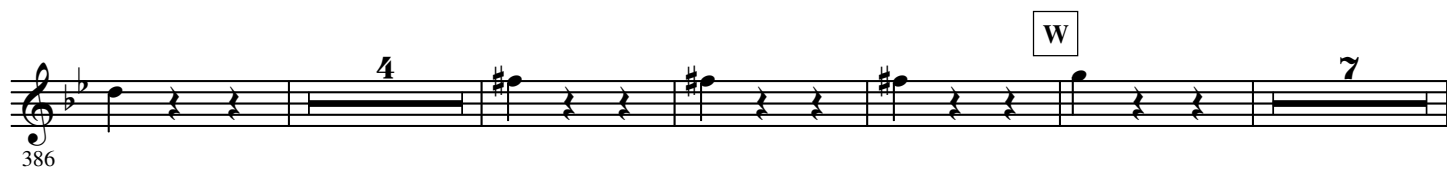
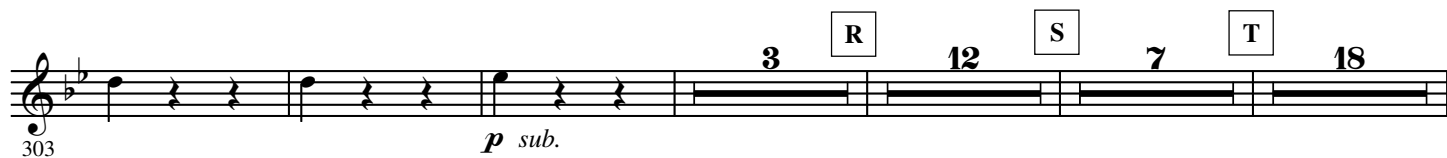
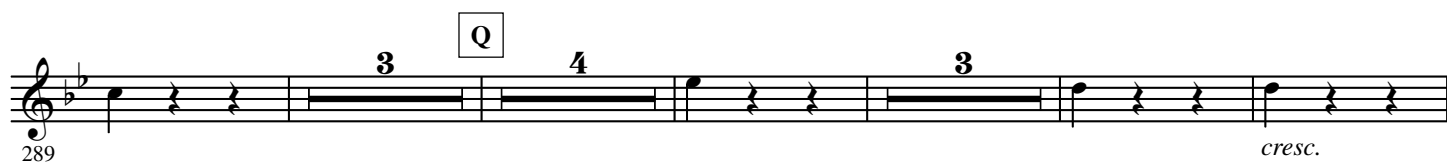
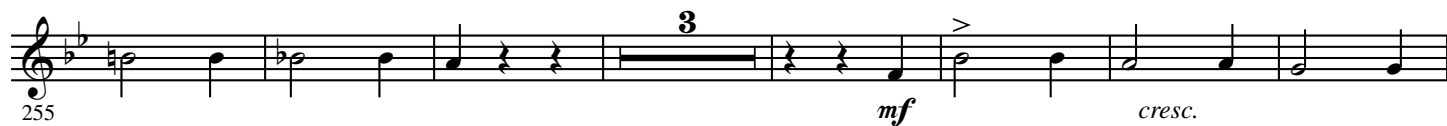
**E** 18 8 Open **F** largamente

**G**

1 37 45 52 59 66 97 104 111 118

*p* *pp* *mp* *f*





4.

- B $\flat$  Trombone 1 -**X** poco stringendo**Y****Z** Tempo I $^{\circ}$ **A'** cue Hrn. 1**B'**