

DANSE MACABRE

B♭ Trombone 1

Symphonic poem

Camille SAINT-SAËNS Op. 40

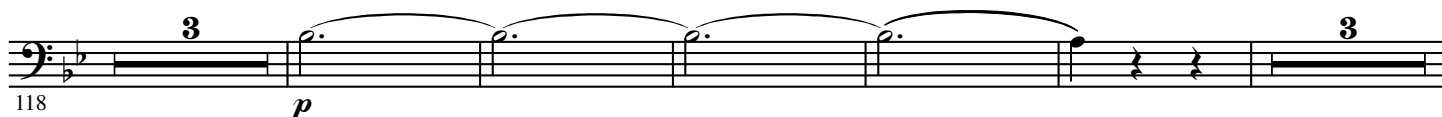
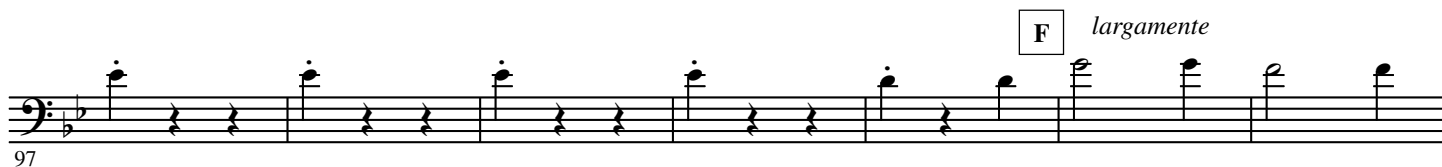
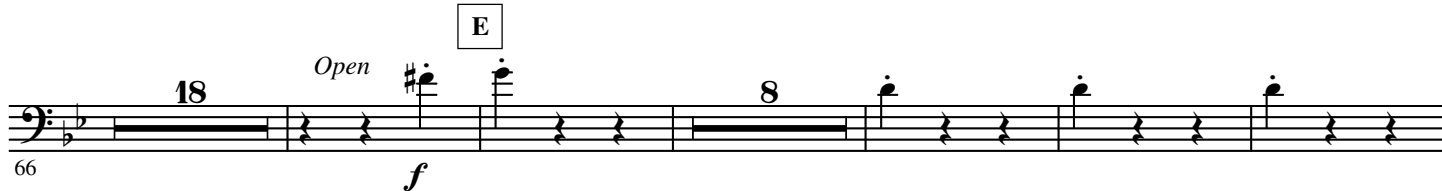
Arranged by José SCHYNS

Moderato waltz tempo

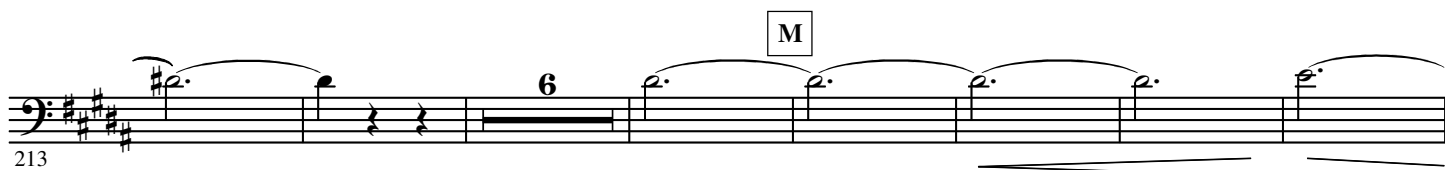
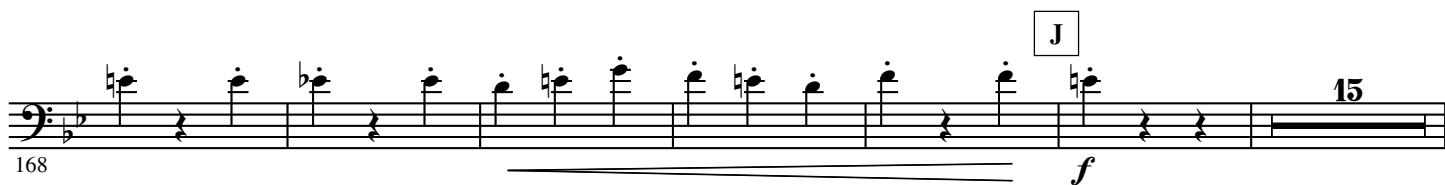
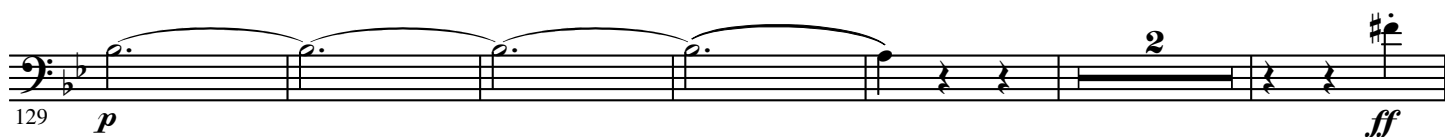
A

B

Muted cue Harp



2.

- B \flat Trombone 1 -

255

mf *cresc.*

265

f

273

dim. *p*

281

dim. *p*

289

cresc.

303

p sub.

346

p cresc. *f*

370

ff

378

386

4.

- B \flat Trombone 1 -

402

X poco stringendo

6 5

418

Y

425

432

fff

Z Tempo I $^{\circ}$ 16

A' cue Hrn. 1

p

438

460

B' 2 11