

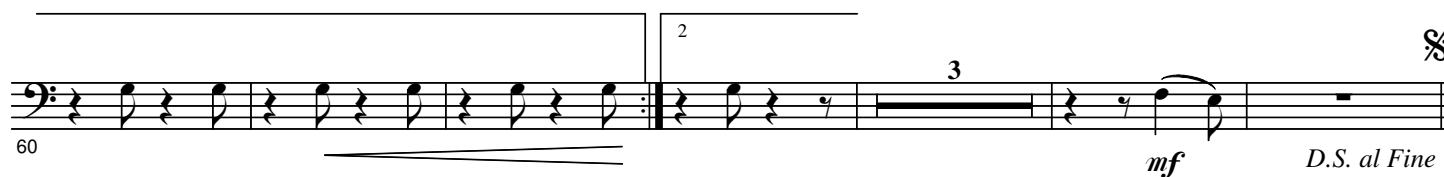
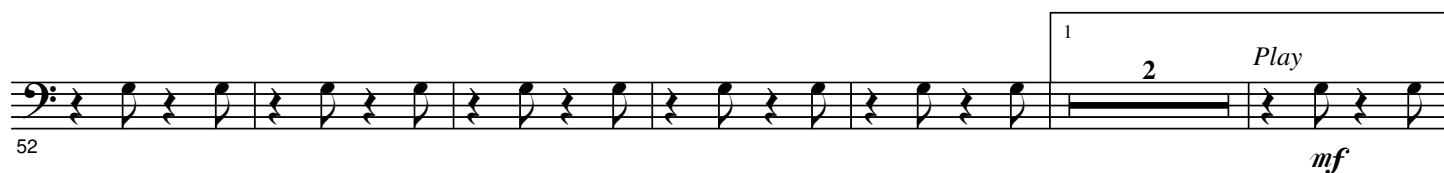
**B $\flat$  Trombone III**

# THREE LITTLE PIECES

*for solo percussion and wind band or fanfare*

Jean-Pierre HAECK

## 1. Blues March

**Allegro****A**

## 2. Polka

**Allegro**  $\text{♩} = 104$ 

105 *f* **G** 6 *mf* 1 2 **H** *f*

117

Detailed description: This block contains two staves of music. The first staff starts at measure 105 with a bass clef and a key signature of one sharp (F#). It begins with a whole rest, followed by a repeat sign. After the repeat, there is a six-measure rest labeled '6', then an eighth note G4, an eighth rest, an eighth note G4, and a quarter note B4. This is followed by a first ending bracket over two measures (A4 quarter, G4 quarter) and a second ending bracket over two measures (A4 quarter, G4 quarter). The staff ends with a repeat sign. The second staff starts at measure 117 with a bass clef and a key signature of two sharps (F#, C#). It begins with an eighth note G4, an eighth rest, and a quarter note A4. This is followed by a two-measure rest labeled '2', then an eighth note G4, an eighth rest, and a quarter note F#4. This is followed by a first ending bracket over two measures (G4 quarter, F#4 quarter) and a second ending bracket over two measures (G4 quarter, F#4 quarter). The staff ends with a repeat sign.

### 3. March

$\text{♩} = 112$

125 *f*

132 **I** 7 **J** 16 11 *p*

170 **K** *f*

177

**L** 15 *f*

184

Detailed description: This block contains five staves of music. The first staff starts at measure 125 with a bass clef and a key signature of one sharp (F#). It begins with an eighth note G4, an eighth rest, and a quarter note A4. This is followed by a quarter note B4, a half note C5, and a half note B4. The staff ends with a repeat sign. The second staff starts at measure 132 with a bass clef and a key signature of one sharp (F#). It begins with a whole note B4, followed by an eighth note G4, an eighth rest, and a quarter note A4. This is followed by a seven-measure rest labeled '7', then a sixteen-measure rest labeled '16', then an eleven-measure rest labeled '11', and finally a quarter note B4. The staff ends with a repeat sign. The third staff starts at measure 170 with a bass clef and a key signature of one sharp (F#). It begins with a whole note B4, followed by a half note C5, and a half note B4. This is followed by a first ending bracket over two measures (A4 quarter, G4 quarter) and a second ending bracket over two measures (A4 quarter, G4 quarter). The staff ends with a repeat sign. The fourth staff starts at measure 177 with a bass clef and a key signature of one sharp (F#). It begins with an eighth note G4, an eighth rest, and a quarter note A4. This is followed by a quarter note B4, a half note C5, and a half note B4. The staff ends with a repeat sign. The fifth staff starts at measure 184 with a bass clef and a key signature of two sharps (F#, C#). It begins with a fifteen-measure rest labeled '15', followed by an eighth note G4, an eighth rest, and a quarter note A4. This is followed by a quarter note B4, a half note C5, and a half note B4. The staff ends with a repeat sign.