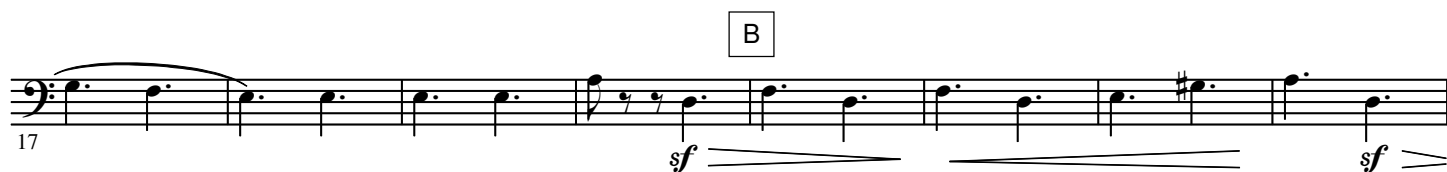
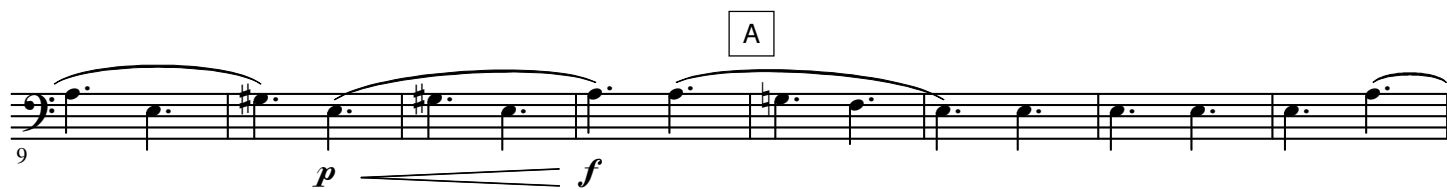


Allegro con brio



62 G

*ff* *p*

69 H

*sf*

76

*sf* *p*

83 I

*f* *ff* *p*

90 J

*ff* *p* *ff* *p*

99

*ff* *p* *p* *f* *fp*

1 *cue Bassoon*

107 K

*f* *ff* *mf*

2

115 L

*f* *mf* *p* *f*

123

*ff*