

B $\flat$  Bass

# JOE DASSIN

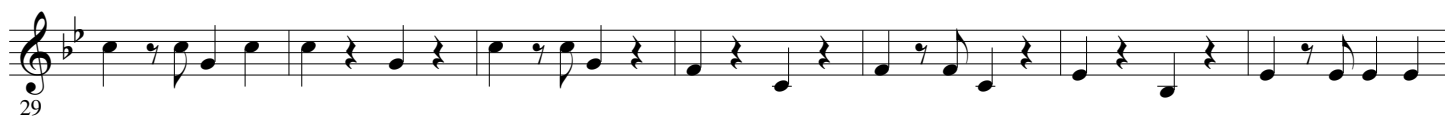
Arr. Maxime LEGAULOIS



**A** "Si tu t'appelles Mélancolie"



**B**  $\text{♩} = 152$   $\text{♩} = \text{♩} = \text{♩}$



**C**



(STRAIGHT)



**D**  $\text{♩} = 120$  "Le petit pain au chocolat"





