

B \flat Trombone 2

JOE DASSIN

Arr. Maxime LEGAULOIS

$\text{♩} = 100$

mf ff

A Cue A. S. 2

p

B $\text{♩} = 152$ Play

mf

"Si tu t'appelles Mélancolie"

C

f

D $\text{♩} = 120$ *"Le petit pain au chocolat"*

f

E

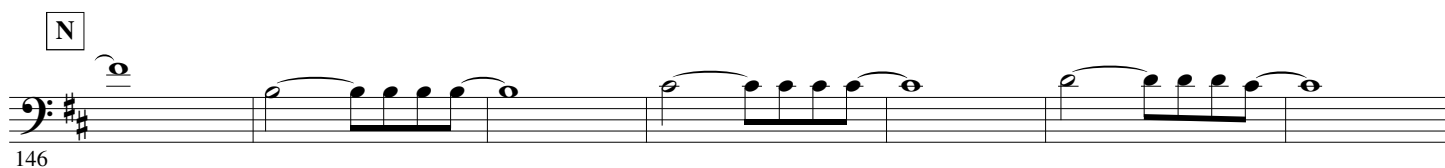
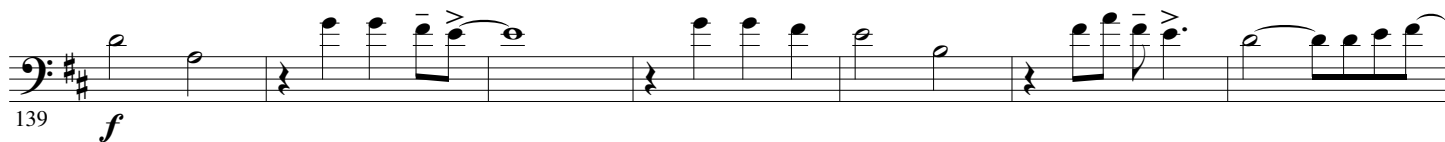
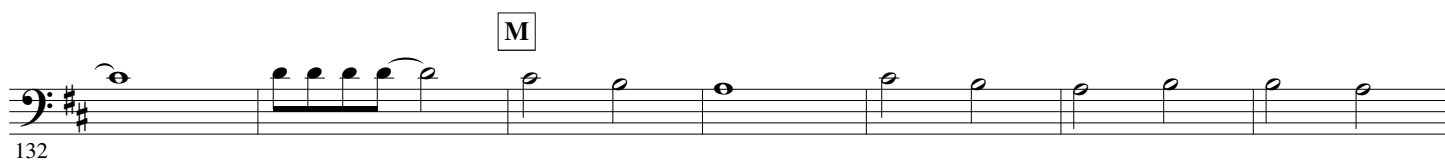
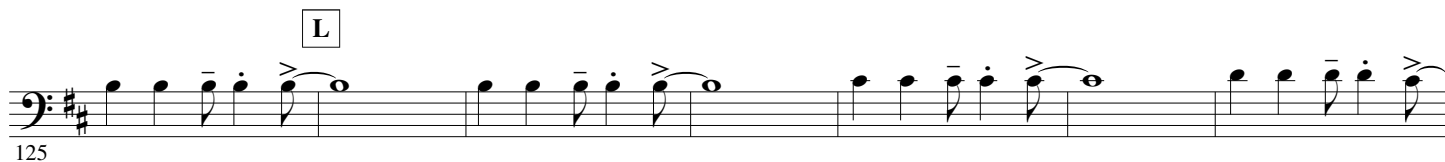
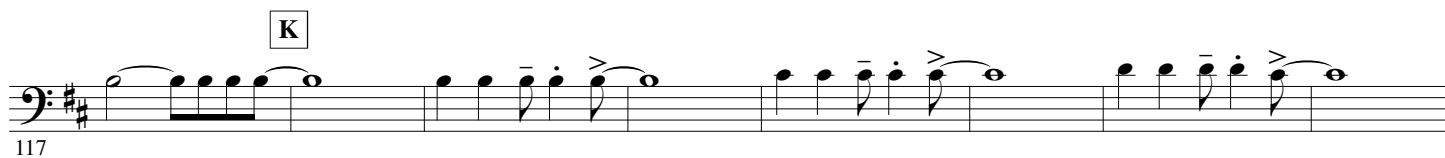
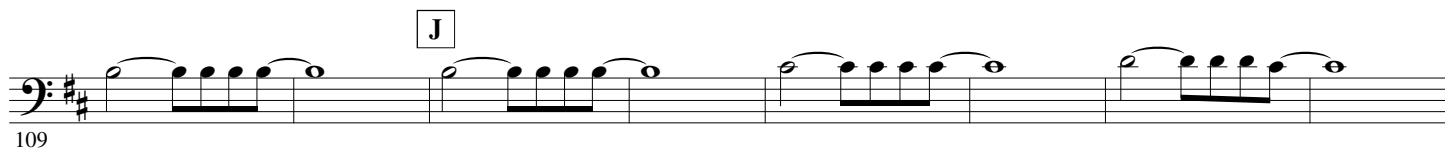
mf

F

mf

7 14 24 32 40 48 55 60 66 74

(STRAIGHT)



3.

- B \flat Trombone 2 -

Cue A. S. 2 $\text{♩} = 112$ "Aux Champs-Élysées"

159 *mf*

165 *mf* **P** Play

170 *mf*

174 *mf* **Q**

181 *mf*

189 *mf* **R**

Cue A. S. 2

197 *mf*

204 *mf* **S** $\text{♩} = 100$ "Siffler sur la colline"

211 *mf* **T**

218

1 2 U

227 *mf*

234

241 *mf*

247 *mf*

254

261 *mf*

268 *ff*

275