

B \flat Trombone 2

JOE DASSIN

Arr. Maxime LEGAULOIS

$\text{♩} = 100$

mf *ff*

A Cue A. S. 2

p

"Si tu t'appelles Mélancolie"

B $\text{♩} = 152$ *Play* *mf*

C

(STRAIGHT)

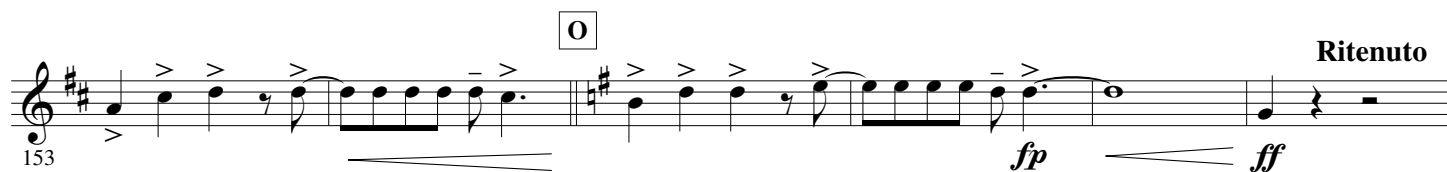
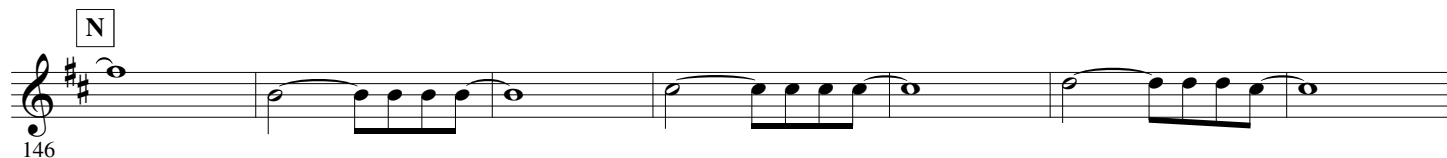
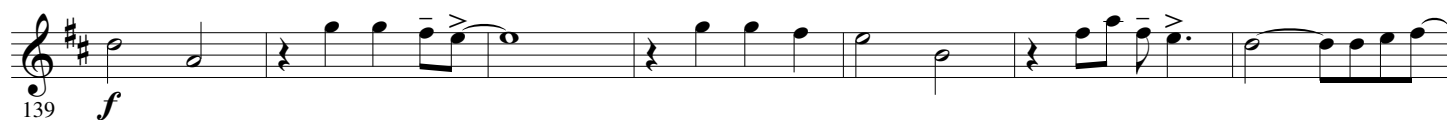
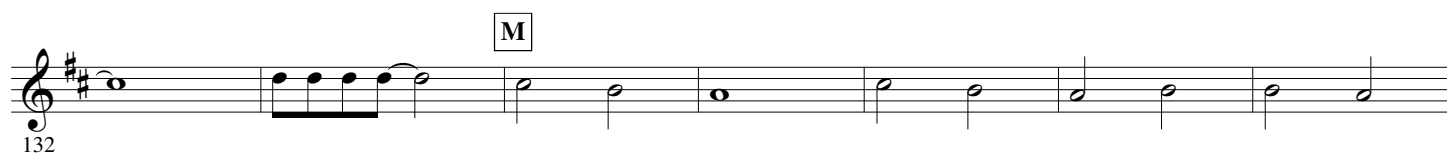
f

D $\text{♩} = 120$ *"Le petit pain au chocolat"* *f*

f

E *mf*

F *mf*



Cue A. S. 2 $\text{♩} = 112$ *"Aux Champs-Élysées"*

159 *mf*

165 *mf* ³

Play P

170 *mf* ³

174 *mf* Q

181 *mf*

189 *mf* R

Cue A. S. 2

197 *mf*

204 *mf* *f* S $\text{♩} = 100$ *"Siffler sur la colline"*

Play

211 *mf* T

218

1 2 U

227 *mf*

234

241 *mf* V

247 *mf* W

254

261 *mf* X

268 *ff*

275