

B \flat Trombone 3

JOE DASSIN

Arr. Maxime LEGAULOIS

$\text{♩} = 100$

mf *ff*

A Cue T. S.

p

"Si tu t'appelles Mélancolie"

B $\text{♩} = 152$ *mf*

C

(STRAIGHT)

f

D $\text{♩} = 120$ *"Le petit pain au chocolat"* *f*

E *mf*

71

F

80 *mf*

G

86

H $\text{♩} = 76$ $\text{♩} = 132$

93

I "La vie se chante la vie se pleure"

103 *mf*

J

110

K

117

L

124

M

131

N

139 *f*

N

146

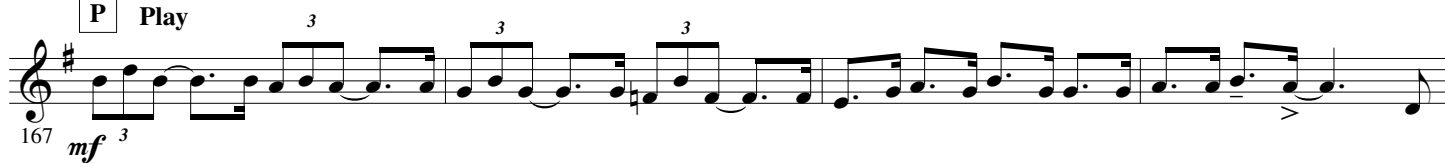
O **Ritenuato**

153 *fp* *ff*

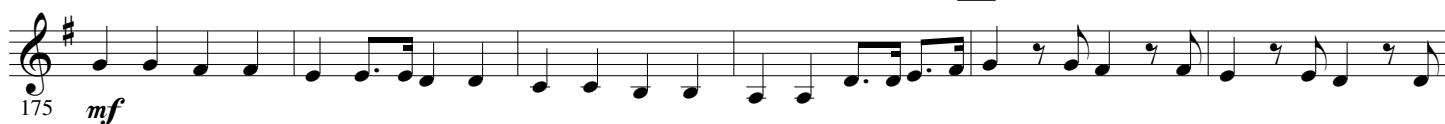
Cue T. S. $\text{♩} = 112$  "Aux Champs-Élysées"



P Play



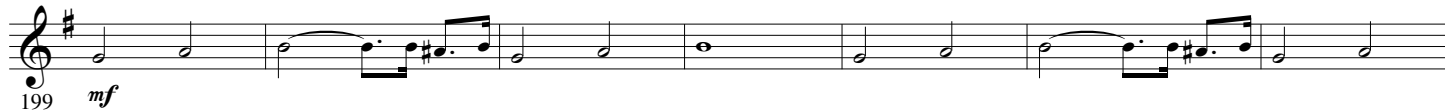
Q



R

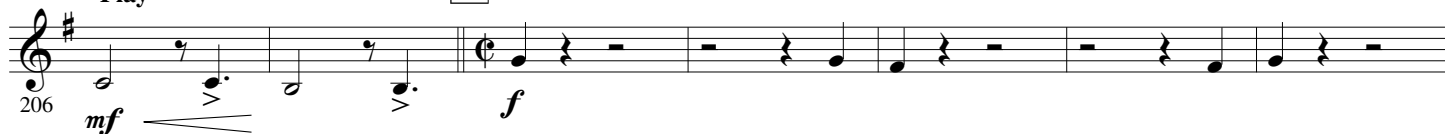


Cue T. S.

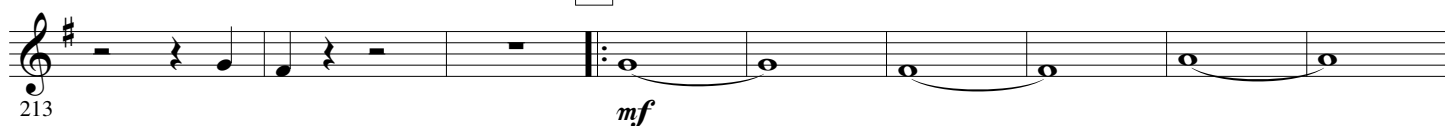


Play

S $\text{♩} = 100$ "Siffler sur la colline"



T



222

1 2 U

mf

230

237

V

mf

244

251

W

mf

258

264

X

mf

270

ff

276