

JOE DASSIN

E♭ Bass

Arr. Maxime LEGAULOIS

♩ = 100

fp *ff*

A "Si tu t'appelles Mélancolie"

p

B ♩ = 152 $\text{♩} = \text{♩}^{\text{3}}$

mf

C

(STRAIGHT)

f

D ♩ = 120 "Le petit pain au chocolat"

f *mf*

E

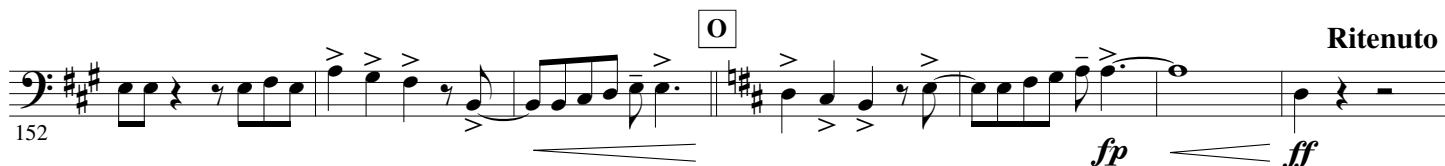


"La vie se chante la vie se pleure"





N



$\text{♩} = 112$ $\text{♩} = \text{♩} = \text{♩}$ "Aux Champs-Élysées"



P



Q



R



S $\text{♩} = 100$ "Siffler sur la colline"



