

B \flat Euphonium**JOE DASSIN**

Arr. Maxime LEGAULOIS

$\text{♩} = 100$

mf *ff*

sostenuto

A "Si tu t'appelles Mélancolie"

mp

B $\text{♩} = 152$

mf

C

(STRAIGHT)

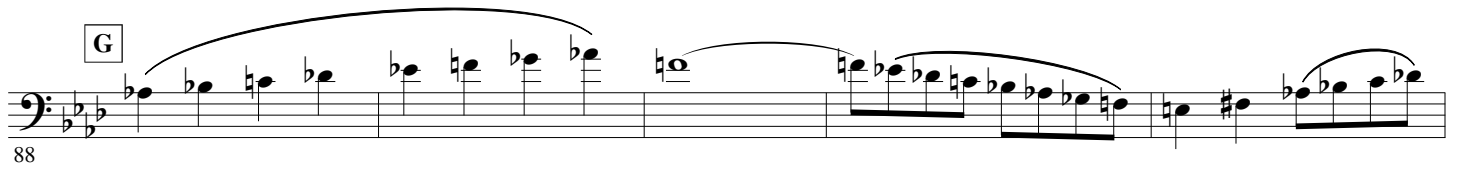
f

D $\text{♩} = 120$ "Le petit pain au chocolat"

f *mf*

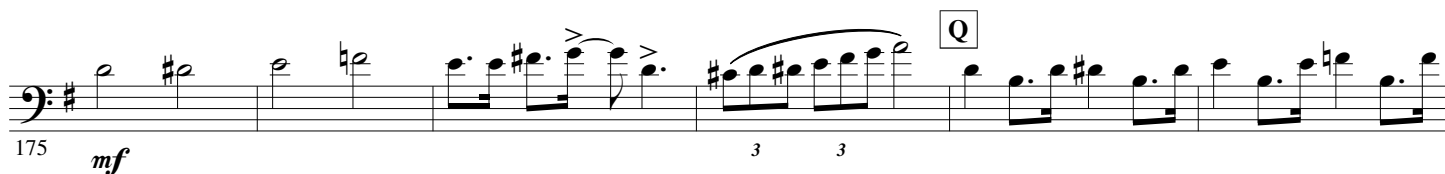
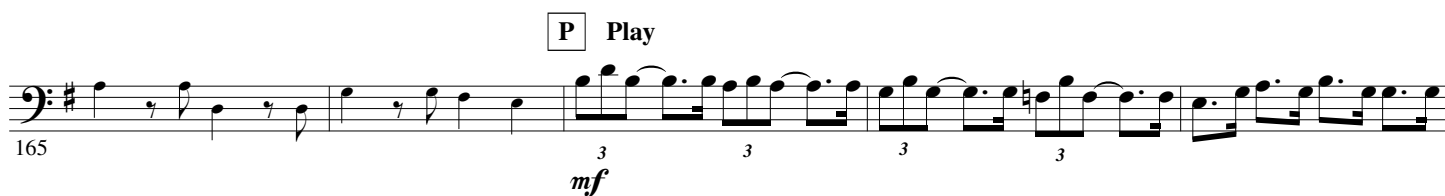
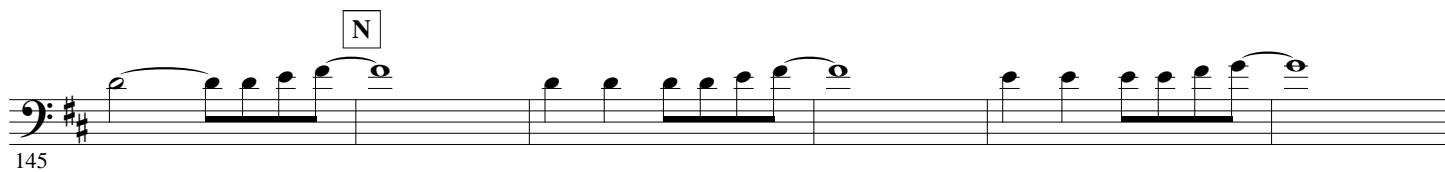
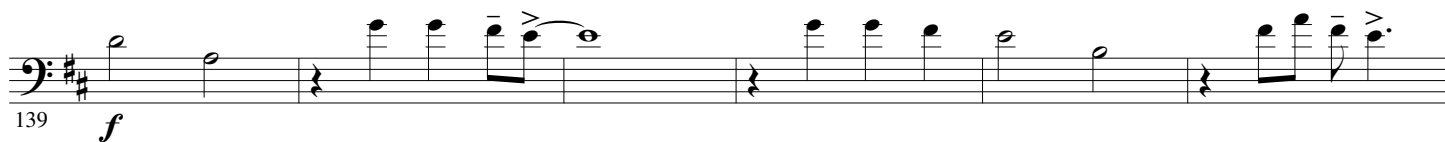
E

mf



"La vie se chante la vie se pleure"





205 **Play** **S** $\text{♩} = 100$ "Siffler sur la colline"
mf *f*

211 **T** 2°x only
mf

218 **U**
1 2

227 *mf*

234

241 **V**
mf

249 **W**
mf

256

263 **X**
mf

270 *f*

277