

E \flat Horn 1

JOE DASSIN

Arr. Maxime LEGAULOIS

$\text{♩} = 100$

mf *ff*

A "Si tu t'appelles Mélancolie"

7 9

B $\text{♩} = 152$ $\text{♩} = \text{♩}$

22 *mf*

30

C

37 *mf*

48 (STRAIGHT) *f*

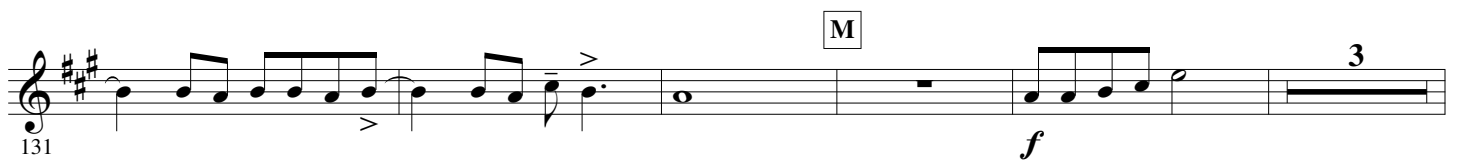
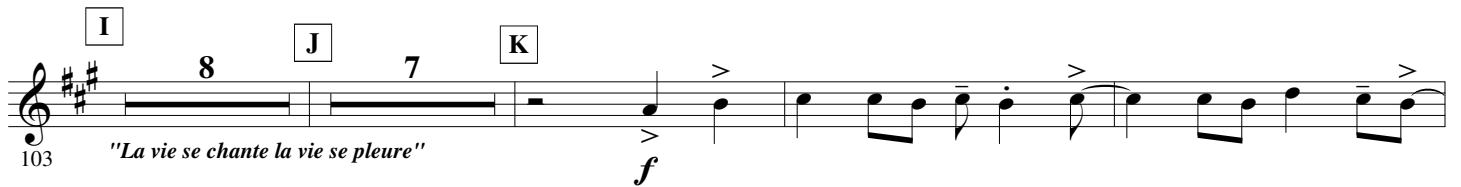
D $\text{♩} = 120$ "Le petit pain au chocolat"

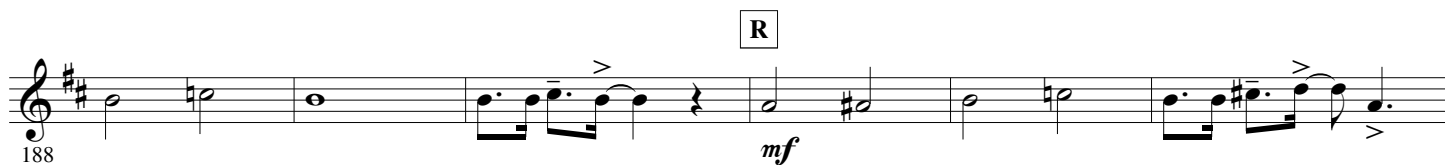
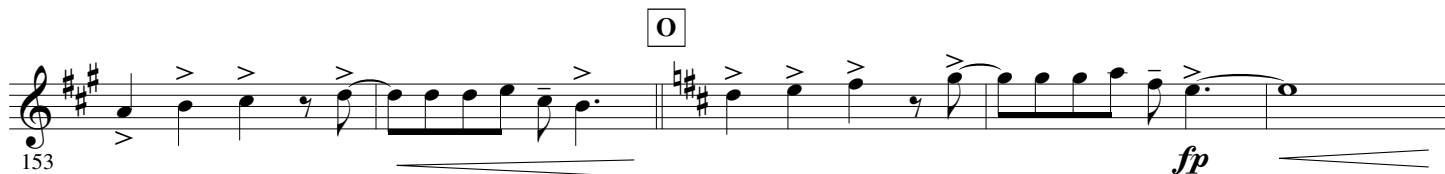
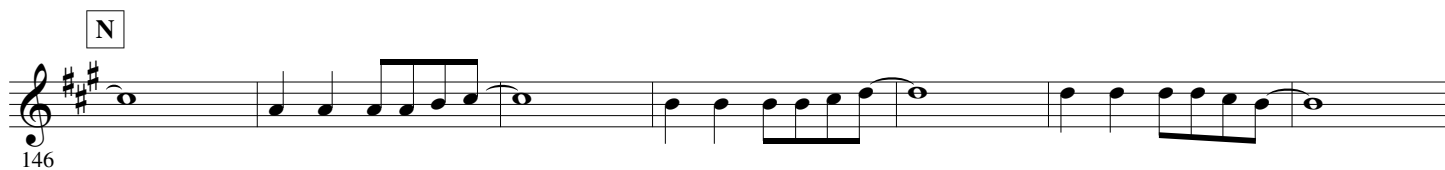
56 *f*

E

63 *mf*

69





S ♩ = 100 "Siffler sur la colline"

198

7

f

T 2°x only

211

mf

218

1 2

U **V**

225

15

f

W 15

246

X

266

f

273

f

278