

E♭ Horn 2

JOE DASSIN

Arr. Maxime LEGAULOIS

♩ = 100

mf *ff*

6

A 9 **B** ♩ = 152 $\text{♩} = \text{♩} = \text{♩}$

12 "Si tu t'appelles Mélancolie" *mf*

29

C 2 *mf* 2

36

44

(STRAIGHT)

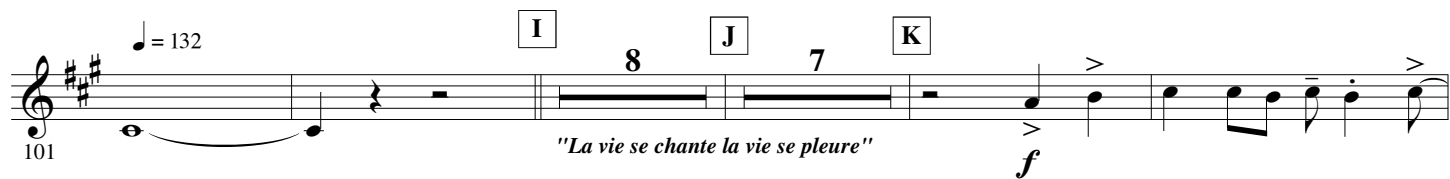
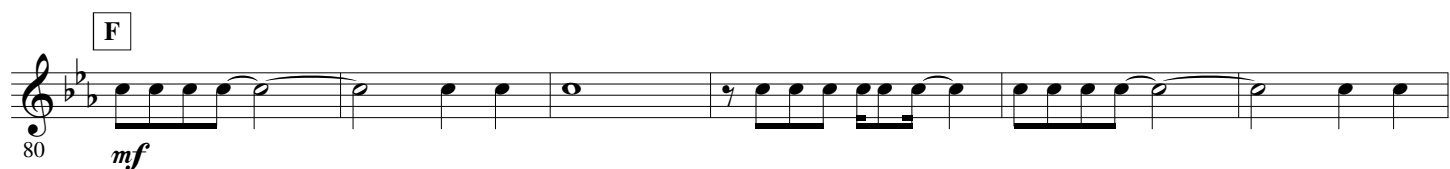
52 *f*

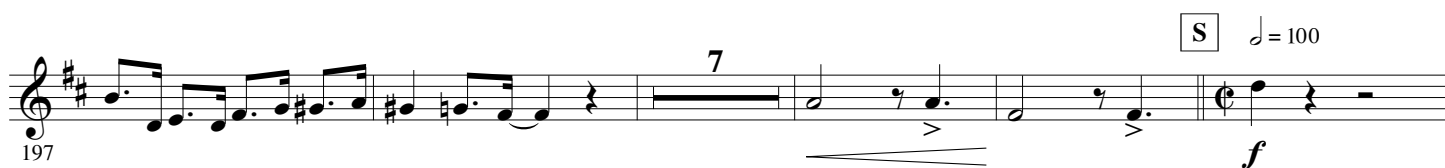
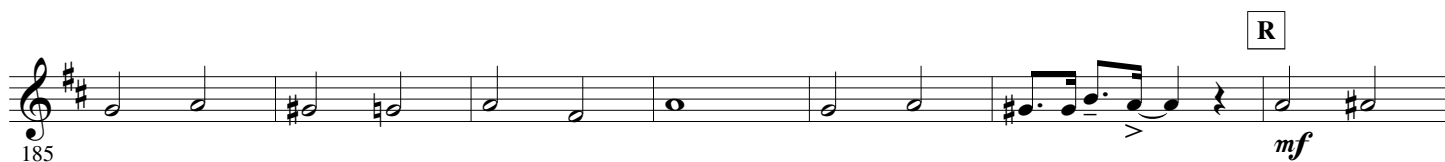
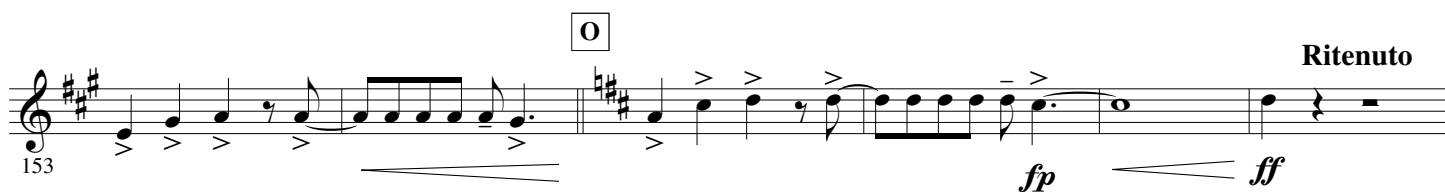
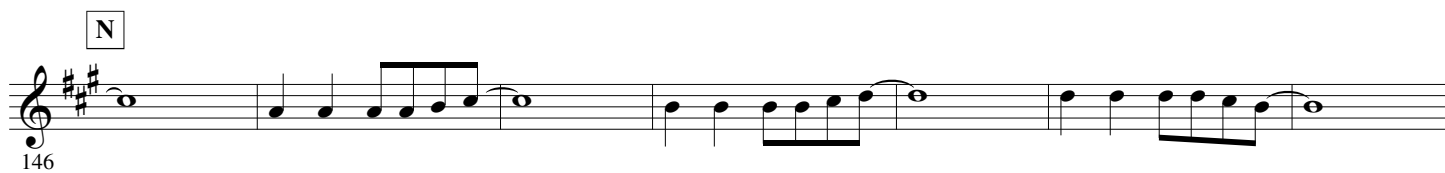
D ♩ = 120 2 "Le petit pain au chocolat"

58 *f*

E *mf*

64





T 2°x only