

B \flat Trombone 1

JOE DASSIN

Arr. Maxime LEGAULOIS

$\text{♩} = 100$

mf ff

A Cue A. S. 1

7

p

B $\text{♩} = 152$ $\text{♩} = \text{♩} = \text{♩}$ $\text{♩} = \text{♩} = \text{♩}$

Play

mf

14

24

C

32

40

48

(STRAIGHT)

f

D $\text{♩} = 120$ "Le petit pain au chocolat"

55

f

60

f

E

66

mf

F

74

mf

81

87

G

93

97

H $\text{♩} = 76$ $\text{♩} = 132$ 4 2

I "La vie se chante la vie se pleure"

mf

109

J

117

K

125

L

132

M

139

f

146

N

153

O

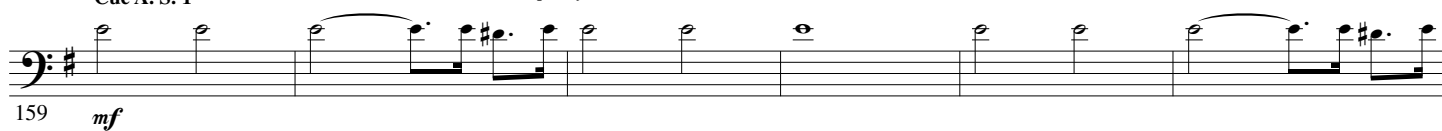
fp *ff*

Ritenuato

3.

- B \flat Trombone 1 -

Cue A. S. 1

 $\text{♩} = 112$ *"Aux Champs-Élysées"*159 *mf*

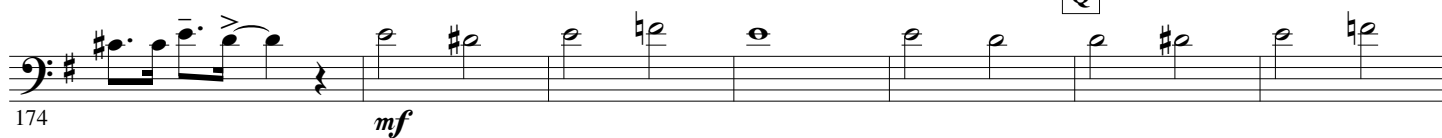
Play P



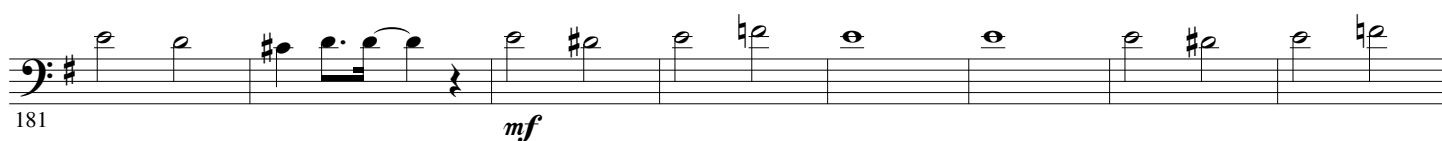
165

mf

170

Q

174

mf

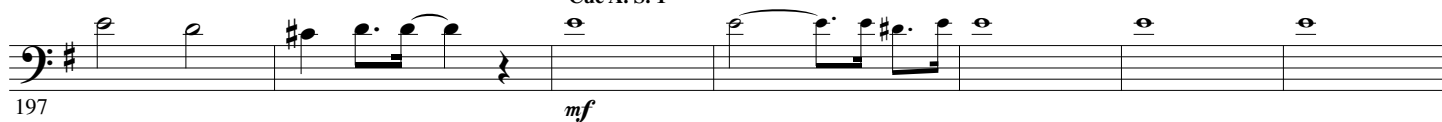
181

*mf*R

189

mf

Cue A. S. 1



197

mf

Play

S $\text{♩} = 100$ *"Siffler sur la colline"*

204

*mf**f*T

211

mf

218

1 2 U

227 *mf*

234

241 *mf*

247 *mf*

254

261 *mf*

268 *ff*

275