

# CLOVIS, THE SWORD AND THE CROSS

**Mysterioso** ♩ = 69 **11**

**1** **Maestoso** ♩ = 80 **CLOVIS & CLOTILDE**

**INTO THE PAST**

*ff* > *f* < *ff* > *f* < *ff* > *f*

**2**

**3** **Poco più mosso** ♩ = 84

**4**

**5** **CHILDHOOD OF A KING**

**Energico** ♩ = 148

*poco rit.*

*mf*

**6**

**CONQUEST**

**Ben ritmato** ♩ = 116

*poco stringendo* . . . . .

*p* < *f* *p* < *f* *f* *fp* < *f* <

**7**

*mf*

*cresc. poco a poco* . . . . .

**8**

*fp* *mf* < *ff* > *mp*

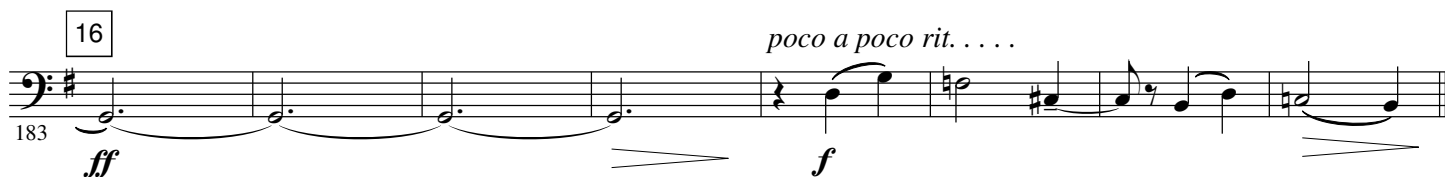
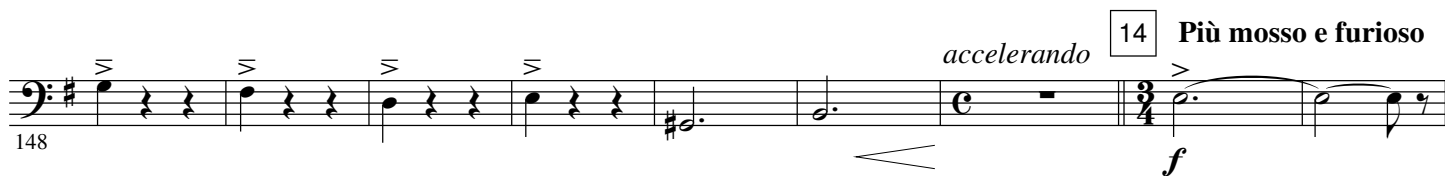
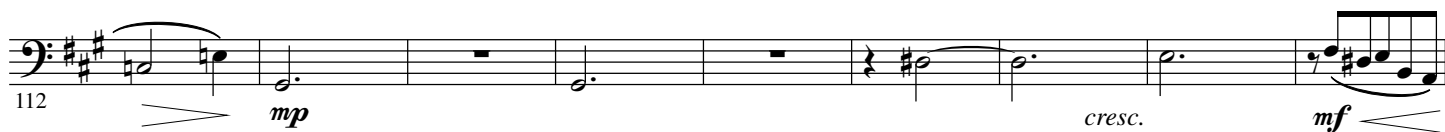
*ritard.* . . . .

**9** **Dolce** ♩ = 96 **THE LIGHT OF TOLBIAC**

*p* *p*

*molto rit. . . .*

10 **Maestoso** ♩ = 88



18 **Mystico**  $\text{♩} = 84$  **TURNING INTO GOD**

201 *mp* *sfz*

**Cadenza** 19 **Con anima**  $\text{♩} = 84$  **CLOTILDE'S INFLUENCE**

210 *ff* *p*

218

226 *mp* *cresc.* *f* *p sub.* *poco rit.*

21 **Meno mosso**  $\text{♩} = 76$  22

232 *f*

23

242 *mp*

24 **Poco più mosso**  $\text{♩} = 84$  **THE SWORD AND THE CROSS**

249 *(mp)*

256 *poco cresc.* *mf*

25 **animato**

263 *cresc. poco a poco . . . .* *f*

*poco rit.* 26 **a tempo**

270 *cresc.* *ff*

27 **Semplice** ♩ = 80 **BAPTISMAL**

278 *mp*

28 **Largamente** ♩ = 69 *poco rit.*

287

29 **Maestoso** ♩ = 72 **CLOVIS, KING OF THE FRANKS**

295 *mf* *f*

30 **Con fuoco !** ♩ = 63 **EPILOGUE**

310 *f*

30 **Con fuoco !** ♩ = 63 **EPILOGUE**

320 *f*

31

330 *f*

32

339 *ff* *mp* *ff*

32

339 *ff* *mp* *ff*

33

348 *ff* *fp* *ff*

33

356 *ff* *fp* *ff*