

CLOVIS, THE SWORD AND THE CROSS

Benoît CHANTRY

Mysterioso ♩ = 69 **11** **1** **Maestoso** ♩ = 80 **CLOVIS & CLOTILDE**

INTO THE PAST

ff > *f* < *ff* > *f* < *ff* > *f*

2

3 **Poco più mosso** ♩ = 84

4

5 **CHILDHOOD OF A KING**

Energico ♩ = 148

poco rit.

6

CONQUEST

Ben ritmato ♩ = 116

poco stringendo

p < *f* *p* < *f* *f* *fp* < *f*

7

cresc. poco a poco

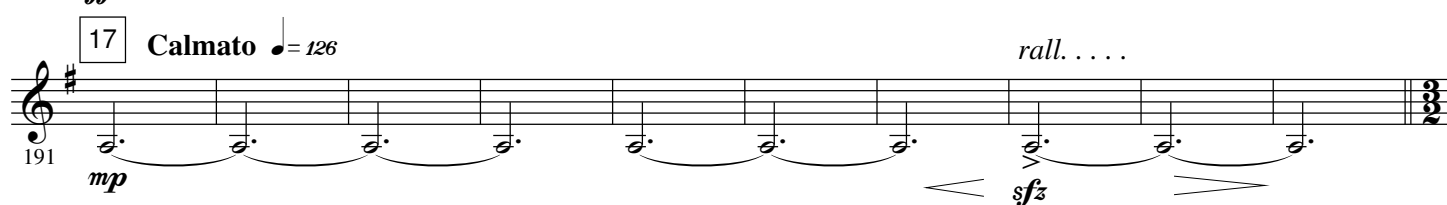
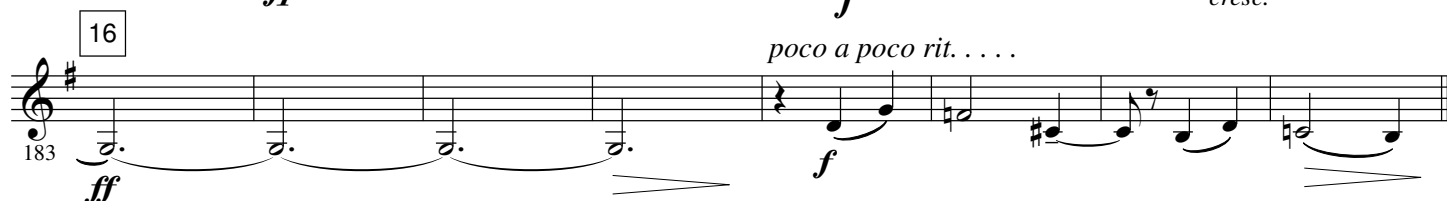
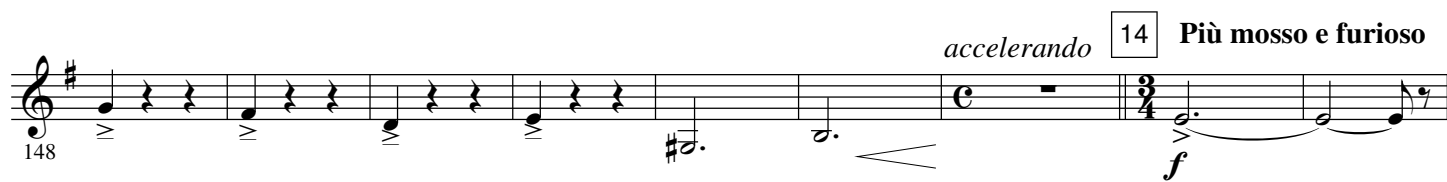
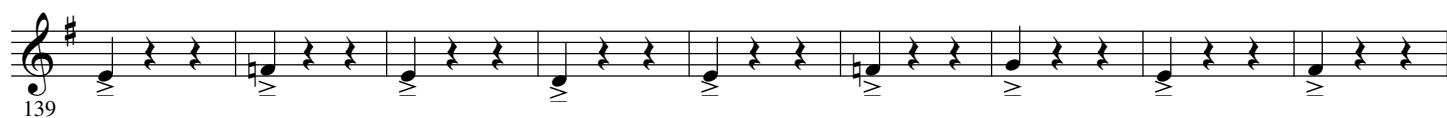
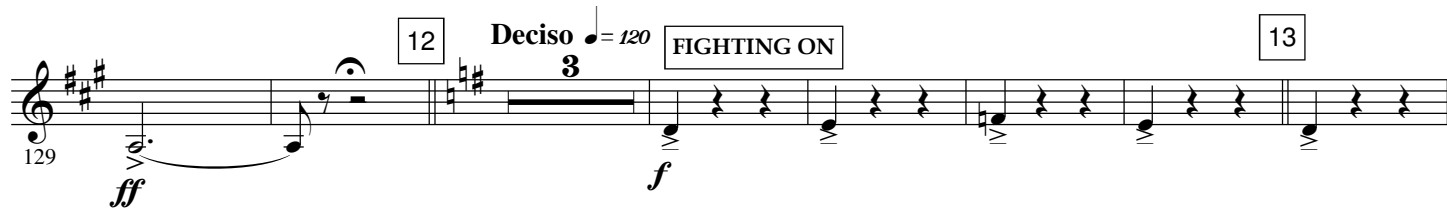
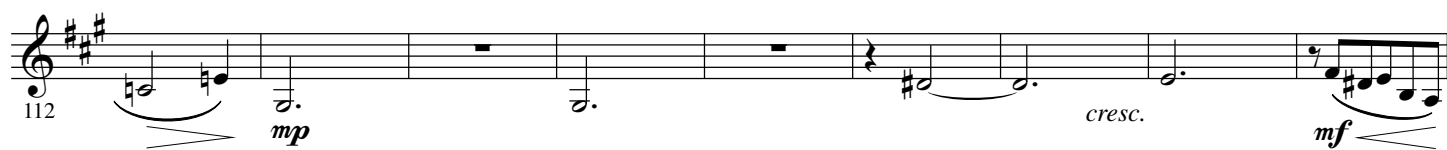
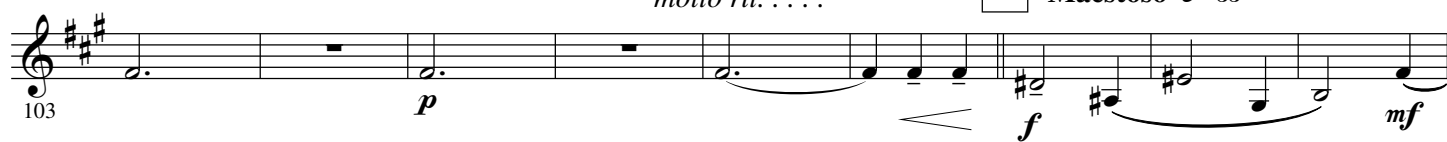
8

ritard. **9** **Dolce** ♩ = 96 **THE LIGHT OF TOLBIAC**

p *p* *ff* > *mp*

molto rit. . . .

10 **Maestoso** ♩ = 88



18 **Mystico** $\text{♩} = 84$ **TURNING INTO GOD**

201 *mp* *sfz*

Cadenza 19 **Con anima** $\text{♩} = 84$ **CLOTILDE'S INFLUENCE**

210 *ff* *p*

20

218

226 *mp* *cresc.* *f* *p sub.* *poco rit.*

21 **Meno mosso** $\text{♩} = 76$ 22

232 *f*

23

242 *mp*

24 **Poco più mosso** $\text{♩} = 84$ **THE SWORD AND THE CROSS**

249 *(mp)*

256 *poco cresc.* *mf*

25 **animato**

263 *cresc. poco a poco* *f*

poco rit. 26 **a tempo**

270 *cresc.* *ff*

27 **Semplice** $\text{♩} = 80$ **BAPTISMAL**

278 *mp*

28 **Largamente** $\text{♩} = 69$ *poco rit.*

287

29 **Maestoso** $\text{♩} = 72$ **CLOVIS, KING OF THE FRANKS**

295 *mf* *f*

303

30 **Con fuoco !** $\text{♩} = 63$ **EPILOGUE**

310 *f*

320

31

330 *f*

32

339 *ff* *mp* *ff*

348

33

356 *ff* *fp* *ff*