

Mysterioso ♩ = 69 **INTO THE PAST**

p *mp*

1 **Maestoso** ♩ = 80 **CLOVIS & CLOTILDE**

ff *f* *ff* *f*

ff *f*

2

mp *ff* *f*

3 **Poco più mosso** ♩ = 84

mf *div.*

4 *poco rit.* **Energico** ♩ = 148

mp

5 **CHILDHOOD OF A KING**

mf *mf*

6 *poco stringendo*

f *p* *f*

Ben ritmato ♩ = 116 **CONQUEST**

p *f* *fp*

7

80 *mp*

84 *cresc. poco a poco*

8

F Horn 3

Play

ritard. . . .

88 *fp* *mp*

9

Dolce $\text{♩} = 96$

THE LIGHT OF TOLBIAC

95 *p* *p*

10

Maestoso $\text{♩} = 88$

109 *f* *mf* *mp*

115 *mf*

11

div.

121 *mf* *fp* *f*

12

Deciso $\text{♩} = 120$

FIGHTING ON

129 *ff* *f*

13

138 *f*

145 *f*

14 **Più mosso e furioso** $\text{♩} = 138$
E Baritone Saxophone
accelerando
152 *f*

159 *Play*

15
166 *f*

174 *div.*
f *mf* *f*

16
181 *ff* *poco a poco rit.* 4

17 **Calmato** $\text{♩} = 126$
191 *mf* *rall.* *sfz*

18 **Mystico** $\text{♩} = 84$ **TURNING INTO GOD**
199 *mf* *mp*

206 *div.* 2 *ff* **Cadenza**

19 **Con anima** $\text{♩} = 84$ **CLOTILDE'S INFLUENCE**
214 *p*

20
221 *poco*

229 *mp* *poco rit.* **21** **Meno mosso** $\text{♩} = 76$ *p*

22 *f*

23 *mp*

24 **Poco più mosso** $\text{♩} = 84$ **THE SWORD AND THE CROSS** *mf*

256

25 **animato** *cresc. poco a poco* *f*

269 *poco rit.* *cresc.* **26** **a tempo** *ff*

275 *p* *(sempre p)*

27 **Semplice** $\text{♩} = 80$ **BAPTISMAL** *poco rit.* *mp*

28 **Largamente** $\text{♩} = 69$

two players



29 **Maestoso** $\text{♩} = 72$ CLOVIS, KING OF THE FRANKS

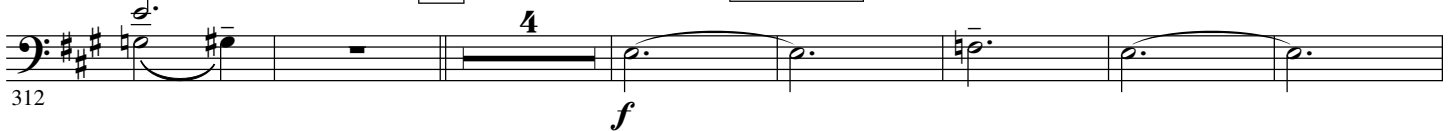
All



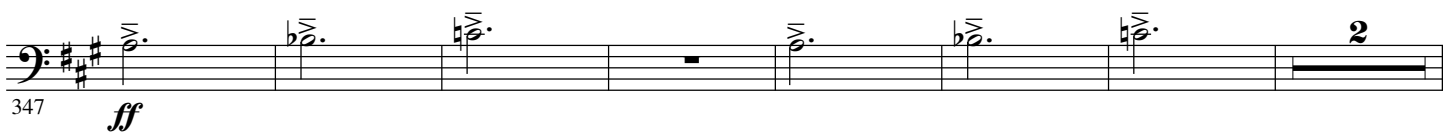
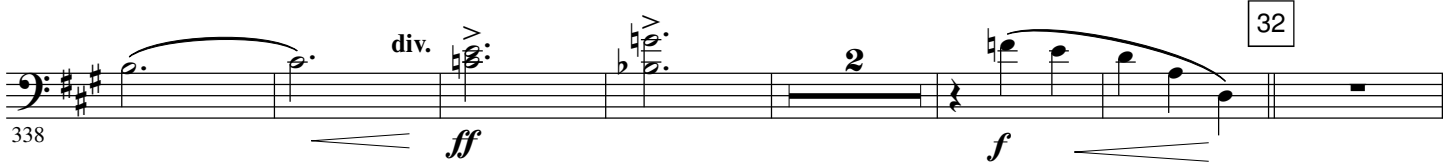
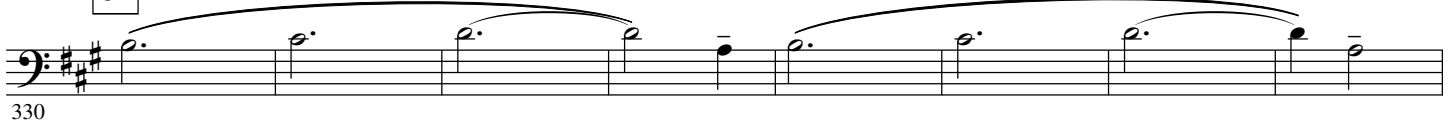
30 **Con fuoco !** $\text{♩} = 63$ EPILOGUE

div.

4



31



33

