

CLOVIS, THE SWORD AND THE CROSS

Mysterioso ♩ = 69 **INTO THE PAST**

5 *p* 2 *mp*

1 **Maestoso** ♩ = 80 **2** **3** **Poco più mosso** ♩ = 84

13 **CLOVIS & CLOTILDE** *f*

37 *mf* *poco rit.*

Energico ♩ = 148 **5** **CHILDHOOD OF A KING**

46 *mf* *mf* *f*

6 *poco stringendo*

65

Ben ritmato ♩ = 116 **CONQUEST**

72 *mf* *fp* *mf*

7

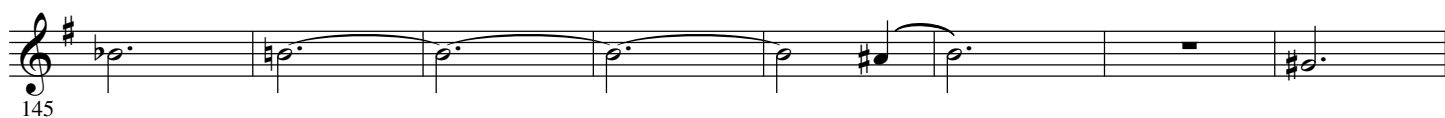
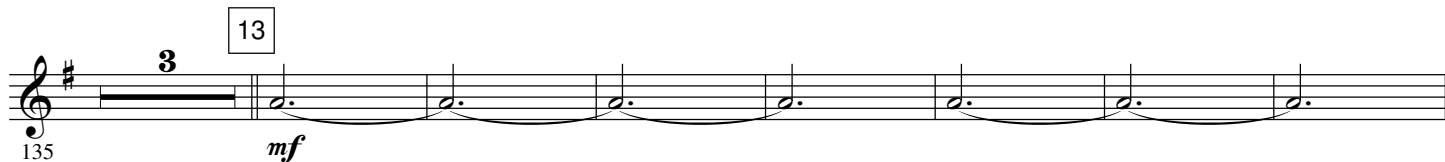
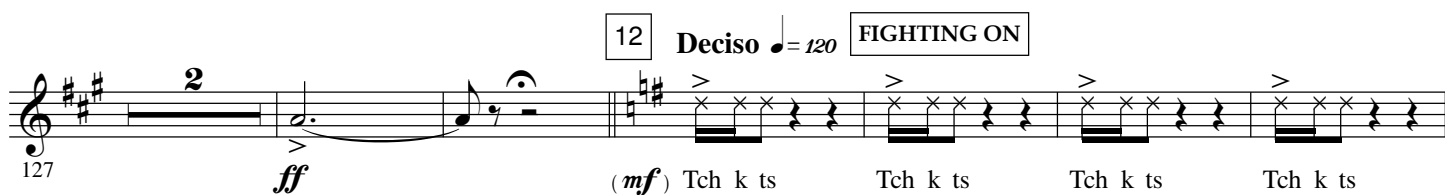
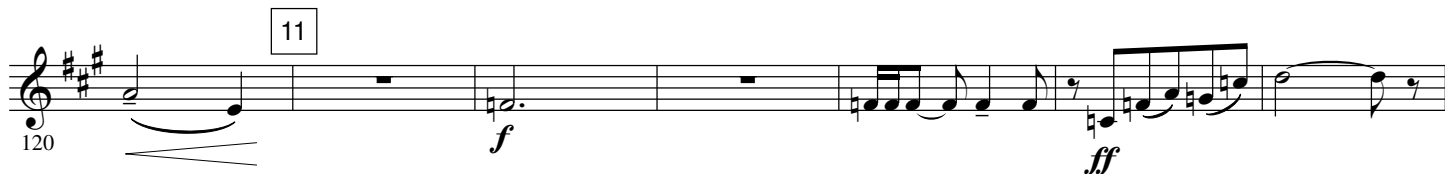
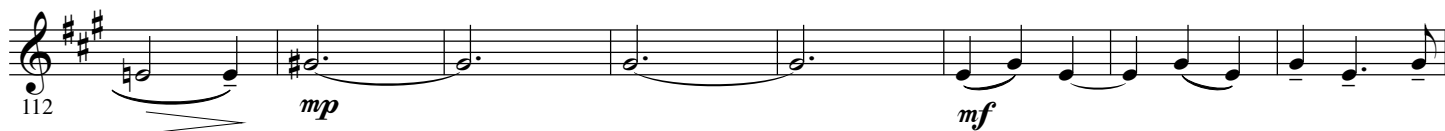
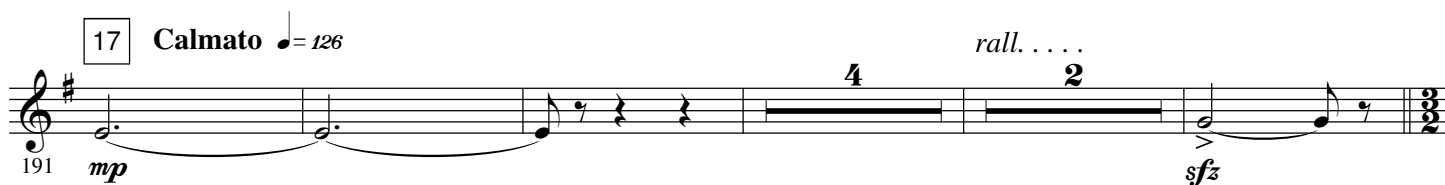
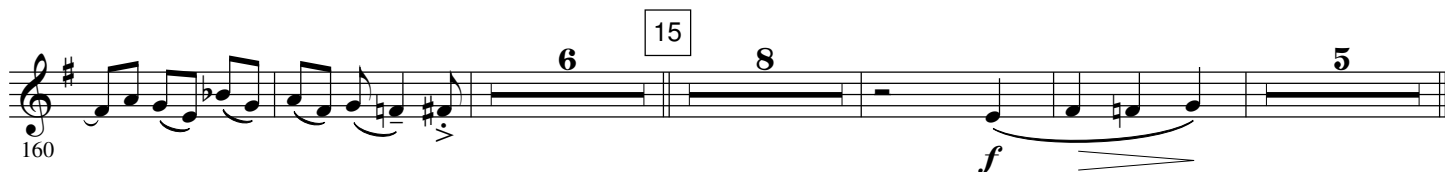
78 *f* *mp*

8

88 *fp* *f* *ff*

ritard. **9** **Dolce** ♩ = 96 **THE LIGHT OF TOLBIAC**

92 *p*

*molto rit. . . .*10 **Maestoso** $\text{♩} = 88$ *accelerando*14 **Più mosso e furioso** $\text{♩} = 138$ 

18 **Mystico** $\text{♩} = 84$ **TURNING INTO GOD** **Cadenza**

cue Hrn. 2 *Play*

201 *mf* *cresc.* *ff*

19 **Con anima** $\text{♩} = 84$ **CLOTILDE'S INFLUENCE** 20

214 *p* *mp*

21 **Meno mosso** $\text{♩} = 76$ *poco rit.*

228 *mf* *fp*

22 4 3 cue Hrn. 2

236 *f* *mp*

THE SWORD AND THE CROSS 24 **Poco più mosso** 25 **animato**

247 12 7

26 **a tempo** *poco rit.*

270 *ff*

27 **Semplice** $\text{♩} = 80$ **BAPTISMAL** *poco rit.*

277 7

CLOVIS, KING OF THE FRANKS 28 **Largamente** $\text{♩} = 69$ 29 **Maestoso** $\text{♩} = 72$

290 *mp* *f*

305 3 *f*

30 **Con fuoco !** ♩ = 63 **EPILOGUE**

314 *furioso*

320

31

328 *mf* *cresc.*

32

340 *ff* *fp* *f* *ff*

348

4

33

358 *f* *p* *ff*