

B \flat Trombone 3

VAYA CON DIOS

Arr. Maxime LEGAULOIS

$\text{♩} = 108$ $\text{♪} = \text{♪} \text{♪} \text{♪}$ **DON'T CRY FOR LOUIE**

mf

A

9

B

18

mf

27

C

35

44

D

55

mf

64

E

73

mf

84

Ritenu

F $\text{♩} = 126$ **JUST A FRIEND OF MINE**

95

mf

G **sostenuto**

108

mf

117

1 2 3

mf

Detailed description: Musical staff 117-124. Key signature: one sharp (F#). The staff contains a sequence of eighth and quarter notes. Measures 117-120 are grouped under a first ending bracket labeled '1'. Measures 121-124 are grouped under a second ending bracket labeled '2'. A triplet of eighth notes is marked in measure 122. The dynamic *mf* is indicated below the staff.

125

H

mp

Detailed description: Musical staff 125-134. Key signature: one sharp (F#). The staff contains a sequence of quarter and eighth notes. A box labeled 'H' is placed above measure 126. The dynamic *mp* is indicated below the staff.

135

3

Detailed description: Musical staff 135-142. Key signature: one sharp (F#). The staff contains a sequence of eighth and quarter notes. A triplet of eighth notes is marked in measure 141. The staff ends with a double bar line and a key signature change to one sharp (F#).

I ♩ = 120 *PUERTO RICO*

143

mf *mp*

Detailed description: Musical staff 143-150. Key signature: one sharp (F#). The staff contains a sequence of quarter and eighth notes. A box labeled 'I' is placed above measure 143. The tempo is marked as ♩ = 120 and the title 'PUERTO RICO' is written. The dynamics *mf* and *mp* are indicated below the staff.

150

mf

Detailed description: Musical staff 150-156. Key signature: one sharp (F#). The staff contains a sequence of half notes and quarter notes. The dynamic *mf* is indicated below the staff.

J

157

3 3 3 3 3 3 3 3

Detailed description: Musical staff 157-162. Key signature: one sharp (F#). The staff contains a sequence of eighth notes, mostly grouped in triplets. A box labeled 'J' is placed above measure 157.

163

3 3 3 3

Detailed description: Musical staff 163-168. Key signature: one sharp (F#). The staff contains a sequence of eighth notes, mostly grouped in triplets.

169

K

3 3 3 3

Detailed description: Musical staff 169-175. Key signature: one sharp (F#). The staff contains a sequence of eighth notes, mostly grouped in triplets. A box labeled 'K' is placed above measure 172.

176

mf

Detailed description: Musical staff 176-183. Key signature: one sharp (F#). The staff contains a sequence of quarter and eighth notes. The dynamic *mf* is indicated below the staff.

184

mp *f* *mf*

Detailed description: Musical staff 184-189. Key signature: one sharp (F#). The staff contains a sequence of quarter and eighth notes. The dynamics *mp*, *f*, and *mf* are indicated below the staff.

L

190

f *mf*

3 3

Detailed description: Musical staff 190-196. Key signature: one sharp (F#). The staff contains a sequence of quarter and eighth notes, mostly grouped in triplets. A box labeled 'L' is placed above measure 190. The dynamics *f* and *mf* are indicated below the staff.

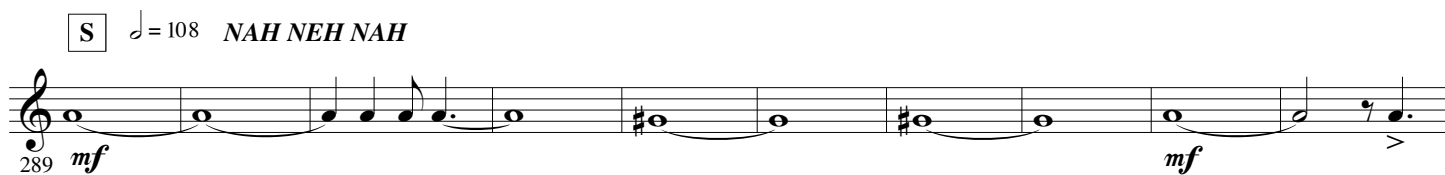
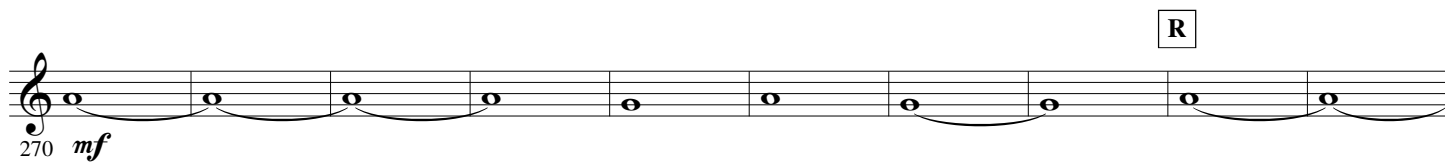
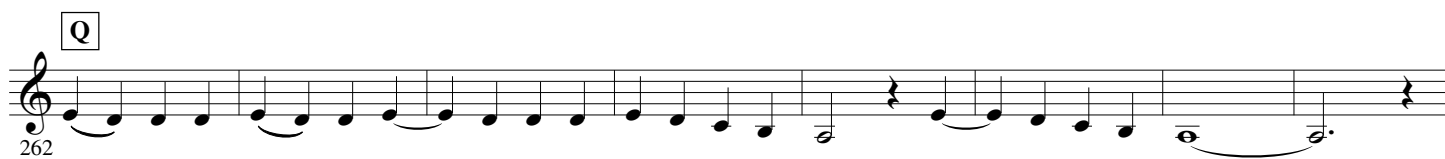
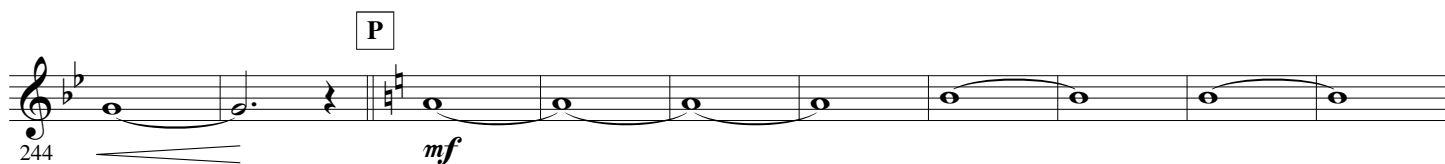
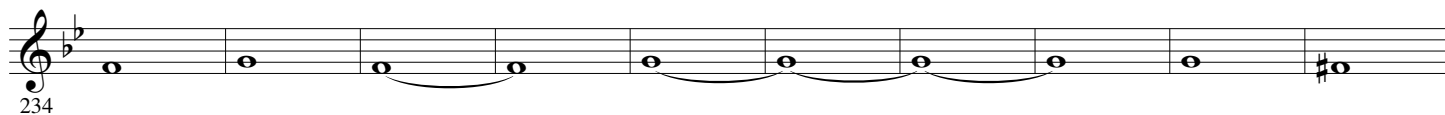
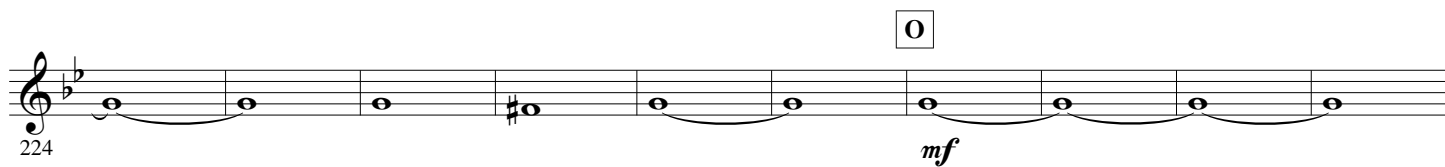
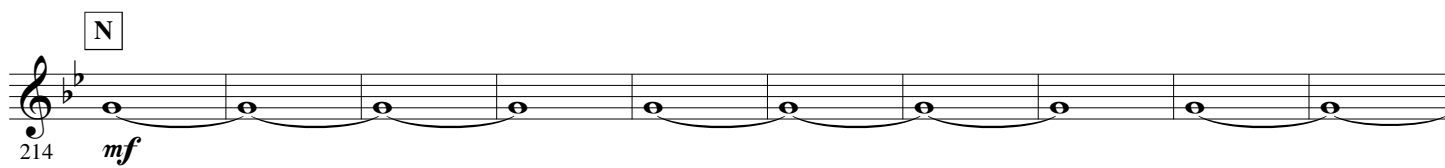
M ♩ = 120 *JOHNNY*

197

mp *mf*

4

Detailed description: Musical staff 197-200. Key signature: one sharp (F#). The staff contains a sequence of quarter and eighth notes, mostly grouped in triplets. A box labeled 'M' is placed above measure 197. The tempo is marked as ♩ = 120 and the title 'JOHNNY' is written. The dynamics *mp* and *mf* are indicated below the staff. The staff ends with a key signature change to one flat (B \flat) and a final measure with a whole note and a '4' above it.



299

T

309

319

U

p *mf*

328

336

V

344

351

W

mf

359

367

X

374

ff