

E♭ Bass

SPANISCHER MARSCH

Johann STRAUSS Op. 433

Arranged by *Yo KITANO*

Allegretto quasi maestoso $\text{♩} = 104 - 108$

Allegretto quasi maestoso $\text{♩} = 104 - 108$

2

3 3

1

f

mf

A

10

Musical notation for the bass line of 'The Rose Tree'. The notation is on a single staff with a bass clef. It consists of nine measures, each containing a quarter note followed by a quarter rest. The notes are G2, F2, E2, D2, C2, B1, A1, G1, and F1. A box labeled 'B' is positioned above the seventh measure.

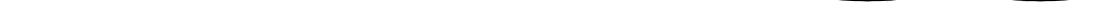
Musical notation for measure 28, bass clef. The staff contains eight measures of music. The first three measures each contain a quarter note followed by two rests. The notes are G2, F2, and E2 respectively. The last five measures each contain a quarter note followed by a rest. The notes are D2, C2, B1, A1, and G1 respectively.

36

mf

C

3

44 

52 D

p

59

[illegible]

74  2

2.

- E \flat Bass -

F



G

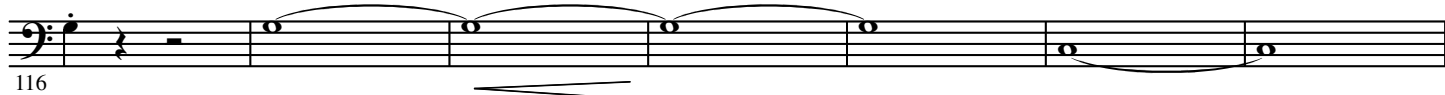


H



Ritard.

riten.



a tempo

I TRIO



J



K



L



