

B \flat Bass Trombone

Ford's Machine

Jess TURNER (ASCAP)

I. Fanfare

Maestoso $\text{♩} = 84$
8

10 *sempre accento*

f *ff*

16 *f* *ff*

22

23 *mf*

29

II. Assembling the Machine

31 *pp*

33 5 38 4 42 Double Time $\text{♩} = 8$ 50 4 54 2

56 *p* *mf* *pp* *mf* *p* *mf*

64 *mf* *p* *mf* *mf* *p* *mf* *mf*

71

72 *p* *mf* *f* *p* *f* *f*

75 2 79

82 *f*

83 88

91 97 4 101 5 106 3

109 7 116 4 120 3 123 5 128

109 *f*

134 140

133 *f* *f*

144 *ritardando* 152 4

143 *mf* *mp* *pp*

III. Ford's America

157 7 164 4 168 4 172 4 176 3

156 *Allegro con spirito* ♩ = 144 with swing ♪ = ♪³♪

180 184 188 4

179 *f* < *ffz* *f* *ff*

flt. *Gliss.* *Gliss.*

192 4 196 4 200 *swing* 204

192 *f* *f*

209 213 4

207 *shout!* *HEY, MOVE IT!!* *mf*

217 221 *accelerando poco a poco* 2 *no swing*

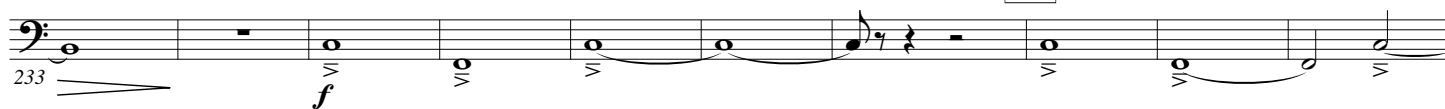
217 *f*

229

225 *f*

233 **Molto allegro** $\text{♩} = 88$

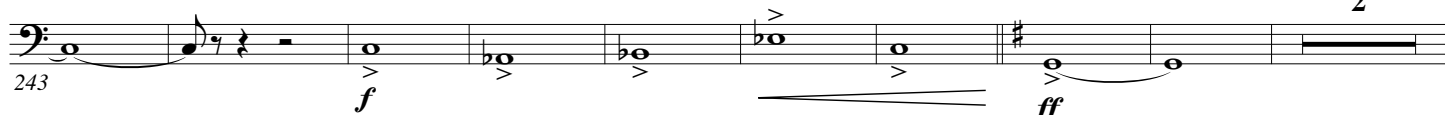
240



245 *ritardando*

250 **Molto allegro e maestoso** $\text{♩} = 88$

2



254

260



267

3

270



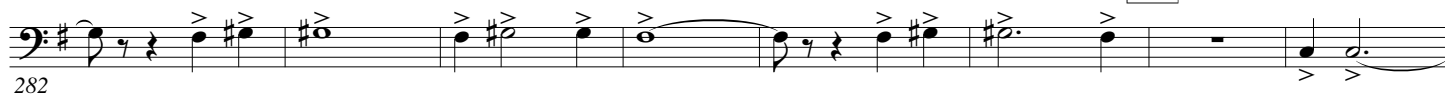
276

280



282

288



294

298



302

ritardando

2

