

B \flat Bass Trombone

Ford's Machine

Jess TURNER (ASCAP)

I. Fanfare

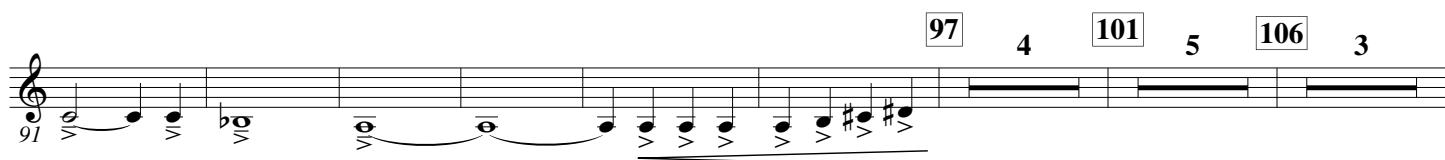
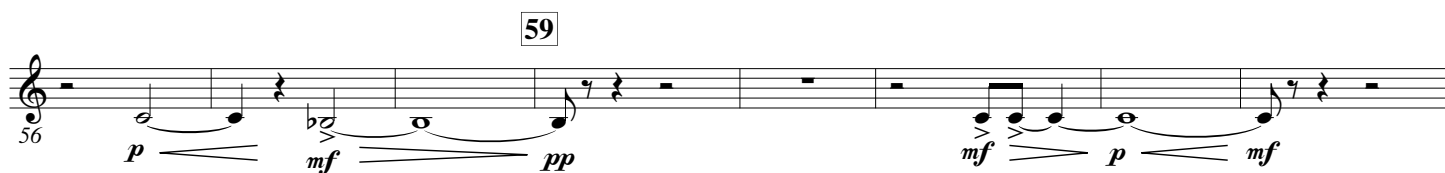
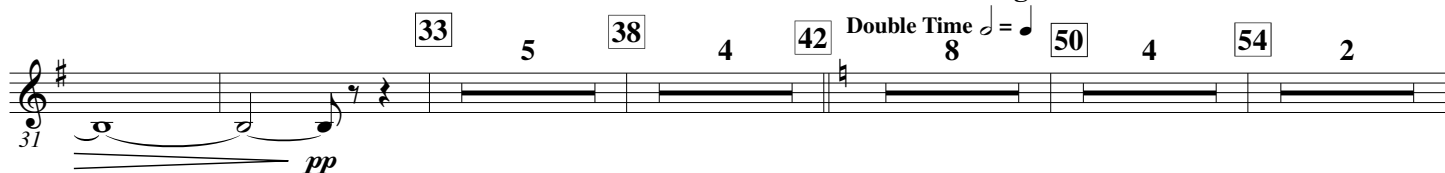
Maestoso $\text{♩} = 84$
8

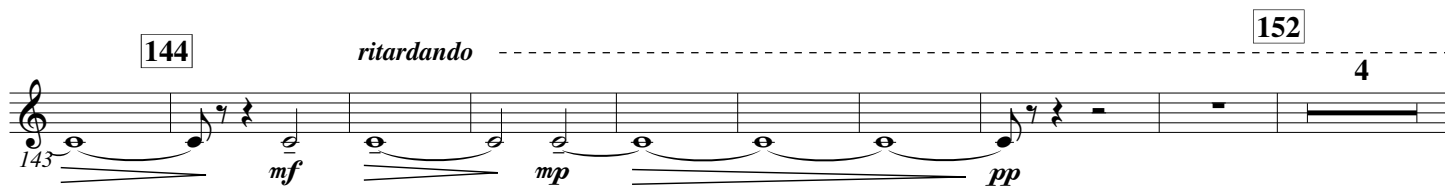
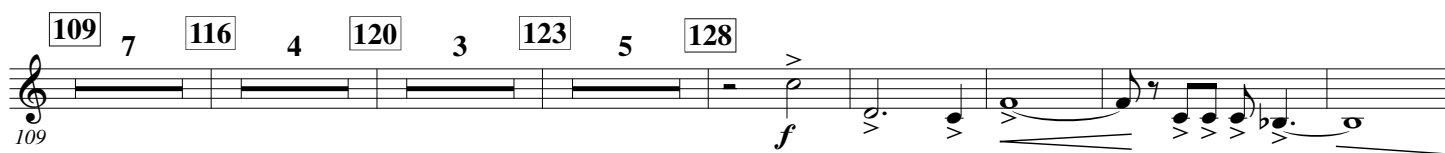
10 *sempre accento*



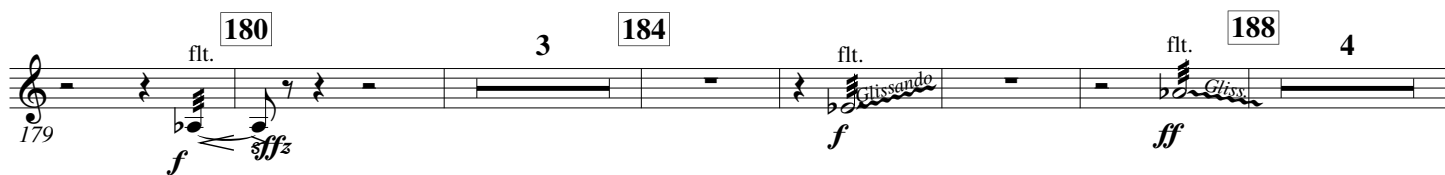
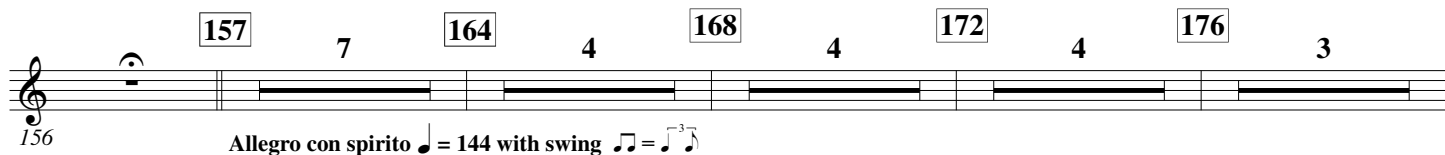
II. Assembling the Machine

Double Time $\text{♩} = 8$





III. Ford's America



233 **Molto allegro** $\text{♩} = 88$ 240

245 *ritardando* 250 **Molto allegro e maestoso** 2

254 260

267 3 270

276 280

282 288

294 298

302 *ritardando* 2