

# B $\flat$ Trombone 1

# Ford's Machine

Jess TURNER (ASCAP)

## I. Fanfare

Maestoso  $\text{♩} = 84$

4

*maestoso*

10 *sempre accento*



16



22



29

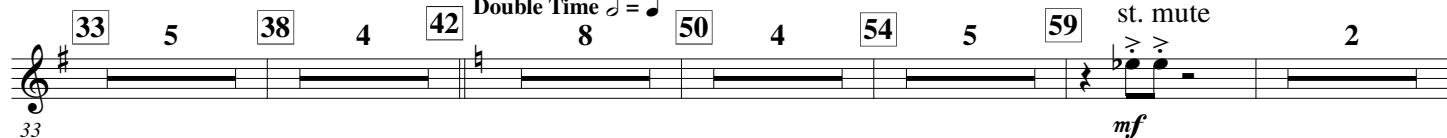


## II. Assembling the Machine

Double Time  $\text{♩} = \text{♩}$

8

st. mute



64



71

75

mute off 3



79 Open

83



88



97

101

106

109

116

120

123



128 **f** 134 **f**

140 **f** 144 *mf* *mp* *ritardando*

152 4 157 7 164 4 168 4

III. Ford's America

Allegro con spirito ♩ = 144 with swing ♩ =  $\text{♩}^3$

172 4 176 2 *flt.* *f* *Glissando* 180 4 184 *flt.* *f* *Glissando*

188 4 192 4 196 4 200 *swing* *f*

204 **f** 209 *ff* 213 *mf*

217 221 *accelerando poco a poco* 2 *no swing* **f**

229 **f**

233 **Molto allegro** ♩ = 88 **f** 240

243 245 *ritardando* 250 *Molto allegro e maestoso* 2

254 260

265 267 3 270

275 276 280

284 288

292 293 298

302 *ritardando* 2