

## Ford's Machine

Jess TURNER (ASCAP)

## I. Fanfare

Maestoso  $\text{♩} = 84$ 

4 10 5 16

*f*  $\text{p}$  *f*  $\text{pp}$  *f*  $\text{p}$

17 22

*f* *ff*

24 29

*mf*

## II. Assembling the Machine

Double Time  $\text{♩} = \text{♩}$ 

33 5 38 4 42 50

*pp* *p*  $\text{mf}$

51 54 59

*p*  $\text{mf}$  *pp* *p*  $\text{mf}$  *pp*

60 64

*mf*  $\text{p}$   $\text{mf}$  *mf*  $\text{p}$   $\text{mf}$  *mf*

68 71 75

*p*  $\text{mf}$  *mf*  $\text{p}$   $\text{mf}$  *f*  $\text{p}$

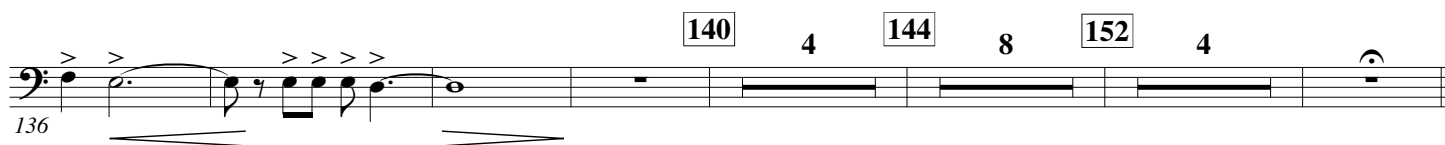
76 79 83

*f* *f*

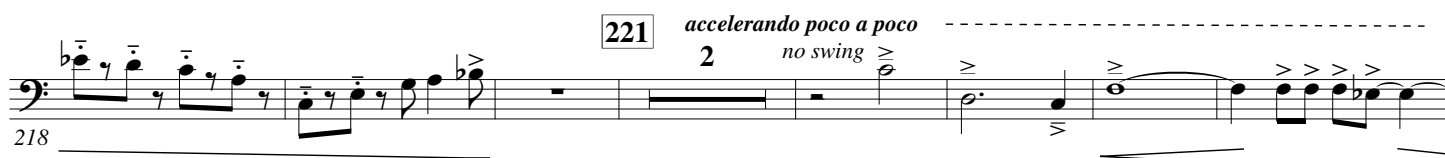
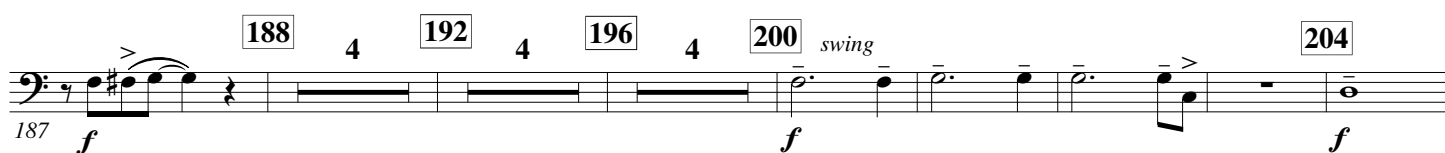
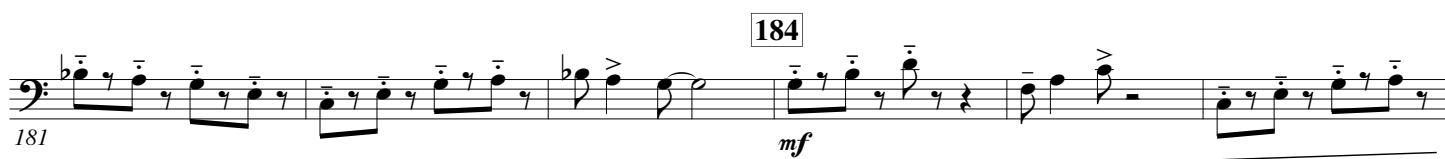
86 88

*f*

95 97 4 101 5 106 3 109 7 116 4 120 3



### III. Ford's America



229 233 *Molto allegro* ♩ = 88

227 *f* *f*

240 245 *ritardando*

237 *f*

250 *Molto allegro e maestoso* 2 254

247 *ff* *f*

260 267 3

258 *ff*

270 6 276 280

270 *f* *ff* *ff*

288

284 *f*

294 298

293 *ff* *f*

302 *ritardando* 2

302 *f* *ff*