

Ford's Machine

Jess TURNER (ASCAP)

I. Fanfare

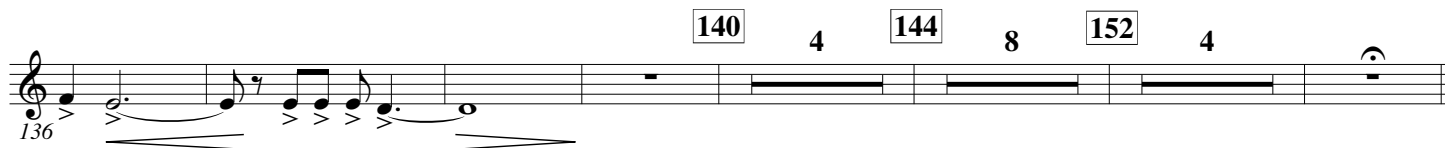
Maestoso $\text{♩} = 84$ 

Musical score for I. Fanfare, measures 1-29. The score is written for B \flat Tuba in G major (one sharp). It begins with a 4/4 time signature. Measures 1-4 are marked with a 4 above the staff. Measures 5-10 are marked with a 5 above the staff. Measures 11-16 are marked with a 16 above the staff. Measures 17-22 are marked with a 22 above the staff. Measures 23-29 are marked with a 29 above the staff. Dynamics include *f*, *p*, *pp*, and *ff*. The tempo is Maestoso, $\text{♩} = 84$.

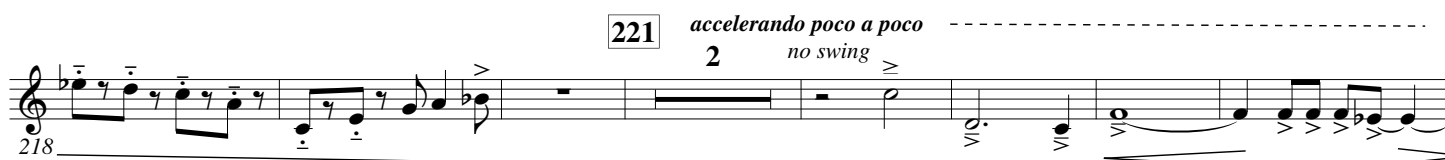
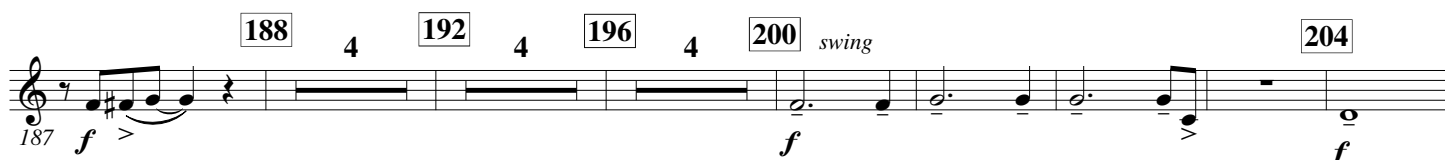
II. Assembling the Machine

Double Time $\text{♩} = \text{♩}$ 

Musical score for II. Assembling the Machine, measures 30-120. The score is written for B \flat Tuba in G major (one sharp). It begins with a 4/4 time signature. Measures 30-32 are marked with a 32 above the staff. Measures 33-38 are marked with a 5 above the staff. Measures 39-42 are marked with a 4 above the staff. Measures 43-50 are marked with a 50 above the staff. Measures 51-54 are marked with a 54 above the staff. Measures 55-59 are marked with a 59 above the staff. Measures 60-64 are marked with a 64 above the staff. Measures 65-71 are marked with a 71 above the staff. Measures 72-75 are marked with a 75 above the staff. Measures 76-79 are marked with a 79 above the staff. Measures 80-83 are marked with an 83 above the staff. Measures 84-88 are marked with an 88 above the staff. Measures 89-97 are marked with a 97 above the staff. Measures 98-101 are marked with a 4 above the staff. Measures 102-106 are marked with a 5 above the staff. Measures 107-109 are marked with a 3 above the staff. Measures 110-116 are marked with a 7 above the staff. Measures 117-120 are marked with a 4 above the staff. Measures 121-123 are marked with a 3 above the staff. Dynamics include *pp*, *p*, *mf*, and *f*. The tempo is Double Time, $\text{♩} = \text{♩}$.



III. Ford's America



229 233 *Molto allegro* $\text{♩} = 88$

237 *f*

240 245 *ritardando*

247 *ff* 254 2

260 267 3

270 276 280 *f* *ff* *ff*

284 288

293 298 *ff* *f*

302 *ritardando* 2 *ff*