

Ford's Machine

Jess TURNER (ASCAP)

I. Fanfare

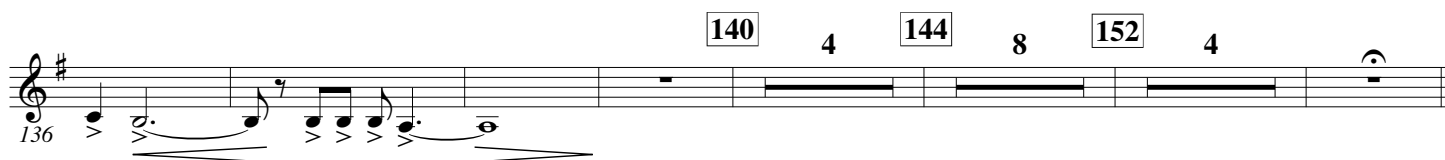
Maestoso ♩ = 84

Measures 1-29 of the Fanfare section. The music is in E major (one sharp) and 4/4 time. It features a series of half-note and quarter-note patterns with dynamic markings of *f*, *p*, *pp*, and *ff*. Measure numbers 4, 10, 16, 22, and 29 are indicated in boxes above the staff.

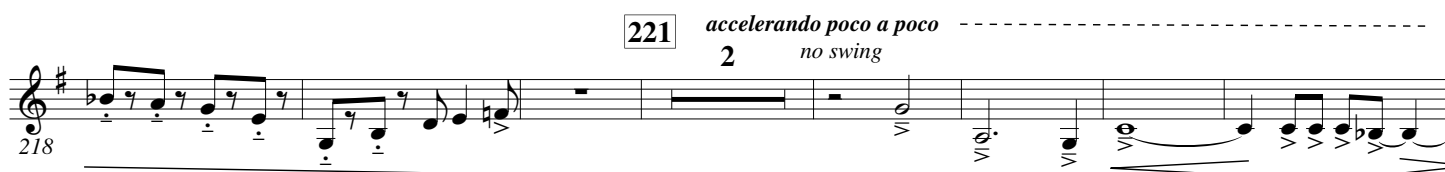
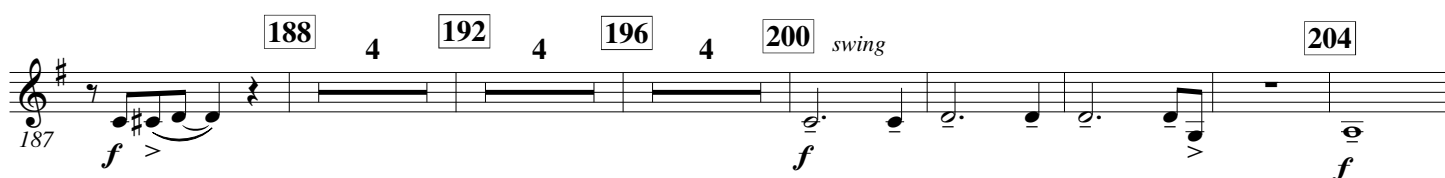
II. Assembling the Machine

Double Time ♩ = ♩

Measures 32-120 of the Assembling the Machine section. The music is in E major and 4/4 time, with a double-time feel. It includes various rhythmic patterns such as eighth notes, sixteenth notes, and dotted rhythms, with dynamic markings of *pp*, *p*, *mf*, and *f*. Measure numbers 33, 38, 42, 50, 54, 59, 64, 71, 75, 79, 83, 88, 97, 101, 106, 109, 116, and 120 are indicated in boxes above the staff.



III. Ford's America



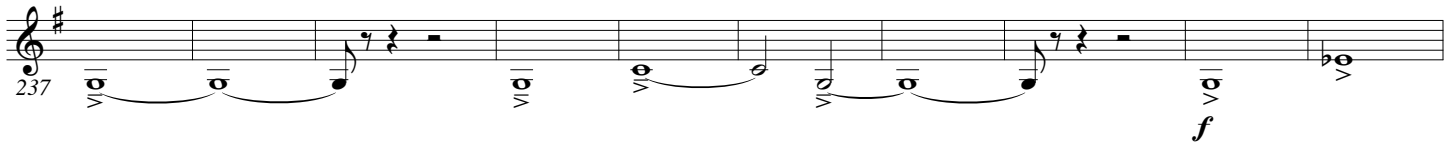
229

233 **Molto allegro** ♩ = 88



240

245 **ritardando** -----



250

Molto allegro e maestoso ♩

254

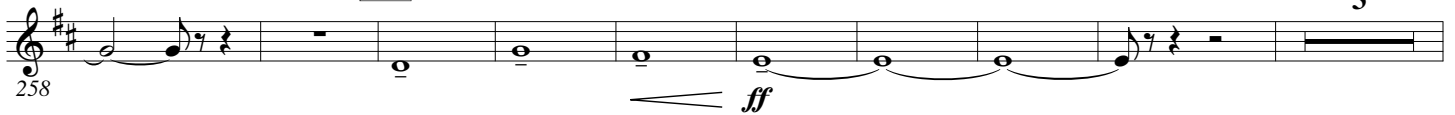
2



260

267

3



270

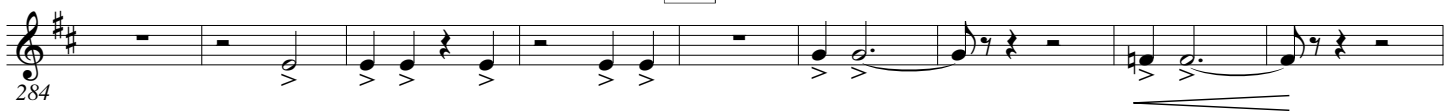
6

276

280



288



294

298



302

ritardando -----

2

