

Ford's Machine

E \flat Horn 2

Jess TURNER (ASCAP)

I. Fanfare

Maestoso $\text{♩} = 84$
8

10 *sempre accento*

f *ff*

16 5 21

16 *f* *ff*

II. Assembling the Machine

Double Time $\text{♩} = \text{♩}$
3

29 33 5 38 4 42

28 *mf* *pp* *mf*

3 50 2 54 2

46 *mf* *mf*

59 64

59 *mf* *mf* *mf*

71 75

69 *mf* *f* *f*

79

77 *mf*

83

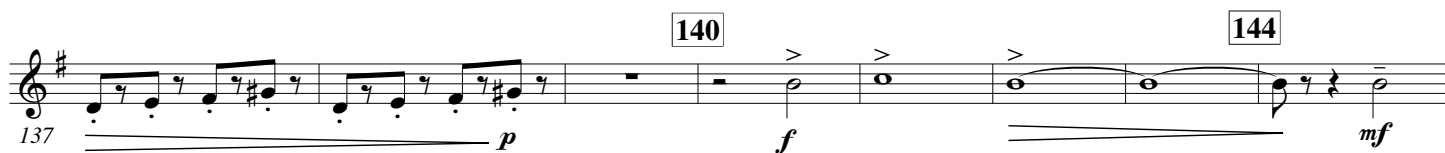
82

88

88 *f*

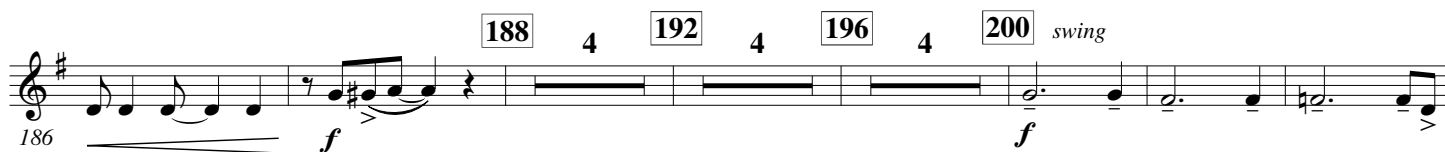
97 4 101 5 106 3 109 7 116 2

97



III. Ford's America

Allegro con spirito ♩ = 144 with swing ♩ = ♩³♩



299 302 *ritardando* ----- *ff*