

Menu Gastronomique

Entrées 1 - Coquilles Saint-Jacques Poêlées

Pan-fried Scallops

Horn in Eb 2

Derek BOURGEOIS Op. 313a

Andante con moto ♩ = 58

1

2

2

2

f

11

2

7

2

3

mf

f

25

30

4

8

5

8

6

f

7

51

8

7

63

2

mf

f

69

rall.

Entrées 2 - Homard Thermidor

Lobster Cooked with Egg Yolks, Brandy and Mustard

Allegro moderato e energico $\text{♩} = 96$

78 10

83

88 11 8 12 8 13 *ff*

109 *mf* 14 *f* *ff*

114 15 8 16 7 *ff*

134

139 17 *f*

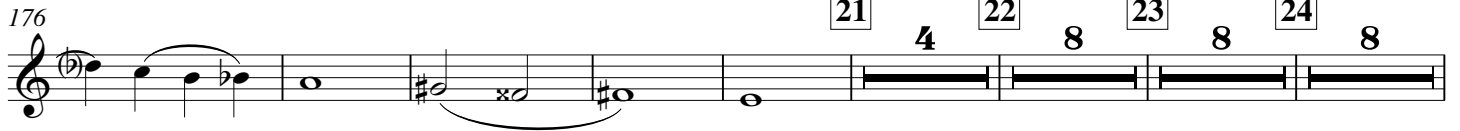
144

Entrées 3 - Pâté de Foie Gras

Paté made from Fattened Goose Liver, Marinaded in Brandy and Dotted with Truffles

Moderato maestoso $\text{♩} = 78$

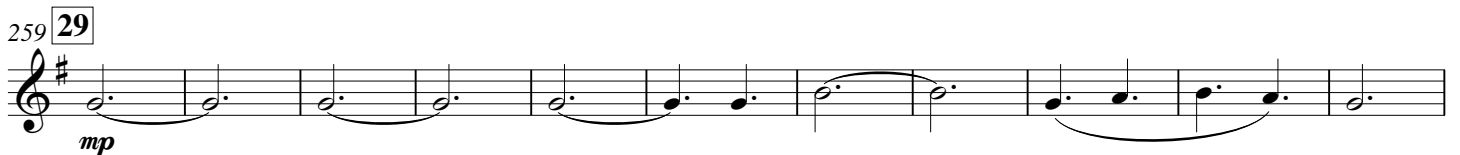
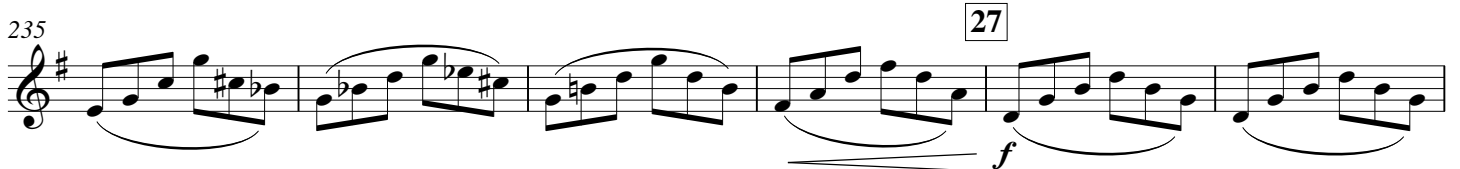
18 8 19 8 20 6 *p* *mp* *f*



Plats Principaux 1 - Sole Normande

Fillets of Sole in a Prawn and Mushroom Sauce

Allegretto ♩ = 132



Plats Principaux 2 - Coq au Vin

Chicken Pieces Cooked in Red Wine

Allegro con spirito $\text{♩} = 120$

31



291

32



296



301

33



306

34



312

35



317



321

36

37



328 38

3

f

Staff 328-334: Treble clef, key of E major (four sharps). Measure 328: quarter rest, eighth note G4, eighth note A4, quarter note B4. Measure 329: quarter rest, eighth note G4, eighth note A4, quarter note B4. Measure 330: quarter rest, eighth note G4, eighth note A4, quarter note B4. Measure 331: quarter rest, eighth note G4, eighth note A4, quarter note B4. Measure 332: quarter rest, eighth note G4, eighth note A4, quarter note B4. Measure 333: quarter rest, eighth note G4, eighth note A4, quarter note B4. Measure 334: quarter rest, eighth note G4, eighth note A4, quarter note B4.

335 39

3

f *ff*

Staff 335-341: Treble clef, key of E major. Measure 335: quarter rest, eighth note G4, eighth note A4, quarter note B4. Measure 336: quarter rest, eighth note G4, eighth note A4, quarter note B4. Measure 337: quarter rest, eighth note G4, eighth note A4, quarter note B4. Measure 338: quarter rest, eighth note G4, eighth note A4, quarter note B4. Measure 339: quarter rest, eighth note G4, eighth note A4, quarter note B4. Measure 340: quarter rest, eighth note G4, eighth note A4, quarter note B4. Measure 341: quarter rest, eighth note G4, eighth note A4, quarter note B4.

342 40

f

Staff 342-346: Treble clef, key of E major. Measure 342: quarter rest, eighth note G4, eighth note A4, quarter note B4. Measure 343: quarter rest, eighth note G4, eighth note A4, quarter note B4. Measure 344: quarter rest, eighth note G4, eighth note A4, quarter note B4. Measure 345: quarter rest, eighth note G4, eighth note A4, quarter note B4. Measure 346: quarter rest, eighth note G4, eighth note A4, quarter note B4.

347 41

f *sf* *f*

Staff 347-351: Treble clef, key of E major. Measure 347: quarter rest, eighth note G4, eighth note A4, quarter note B4. Measure 348: quarter rest, eighth note G4, eighth note A4, quarter note B4. Measure 349: quarter rest, eighth note G4, eighth note A4, quarter note B4. Measure 350: quarter rest, eighth note G4, eighth note A4, quarter note B4. Measure 351: quarter rest, eighth note G4, eighth note A4, quarter note B4.

352 42

f

Staff 352-357: Treble clef, key of E major. Measure 352: quarter rest, eighth note G4, eighth note A4, quarter note B4. Measure 353: quarter rest, eighth note G4, eighth note A4, quarter note B4. Measure 354: quarter rest, eighth note G4, eighth note A4, quarter note B4. Measure 355: quarter rest, eighth note G4, eighth note A4, quarter note B4. Measure 356: quarter rest, eighth note G4, eighth note A4, quarter note B4. Measure 357: quarter rest, eighth note G4, eighth note A4, quarter note B4.

358 43

ff *f*

Staff 358-362: Treble clef, key of E major. Measure 358: quarter rest, eighth note G4, eighth note A4, quarter note B4. Measure 359: quarter rest, eighth note G4, eighth note A4, quarter note B4. Measure 360: quarter rest, eighth note G4, eighth note A4, quarter note B4. Measure 361: quarter rest, eighth note G4, eighth note A4, quarter note B4. Measure 362: quarter rest, eighth note G4, eighth note A4, quarter note B4.

363

f *sf* *f*

Staff 363-365: Treble clef, key of E major. Measure 363: quarter rest, eighth note G4, eighth note A4, quarter note B4. Measure 364: quarter rest, eighth note G4, eighth note A4, quarter note B4. Measure 365: quarter rest, eighth note G4, eighth note A4, quarter note B4.

366

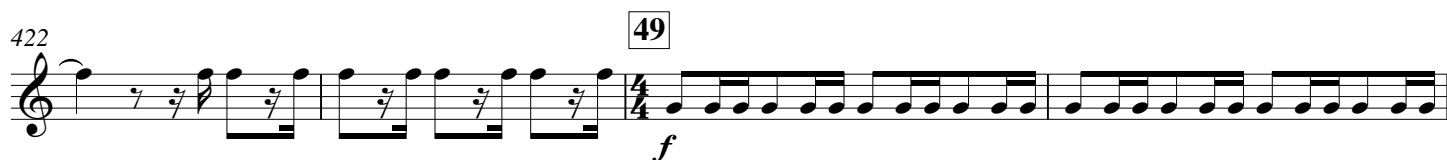
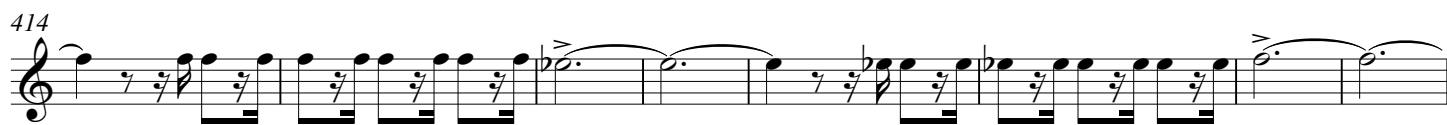
f

Staff 366-368: Treble clef, key of E major. Measure 366: quarter rest, eighth note G4, eighth note A4, quarter note B4. Measure 367: quarter rest, eighth note G4, eighth note A4, quarter note B4. Measure 368: quarter rest, eighth note G4, eighth note A4, quarter note B4.

Plats Principaux 3 - Tournedos Rossini

Filet Mignon, pan-fried in butter, placed on a crouton, topped with foie gras and truffles and served with Madeira demi-glace sauce

Allegro vivace ♩ = 132



441 **51**

p *mp* *mf*

444

f *ff*

448 Tap on stand with anything convenient **52** Allegro vivace come prima ♩ = 132 **53** 10

f

466 **54**

mf

471 **55** accel. poco a poco 4

mp

480 **56**

mf

485

mf

490 **57** Presto ♩ = 160

ff

496

ff

502 **58** Ancora più mosso ♩ = 172

f

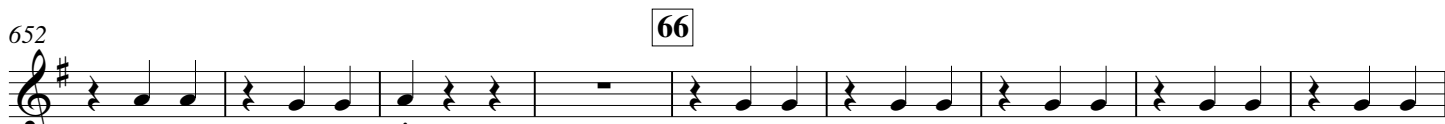
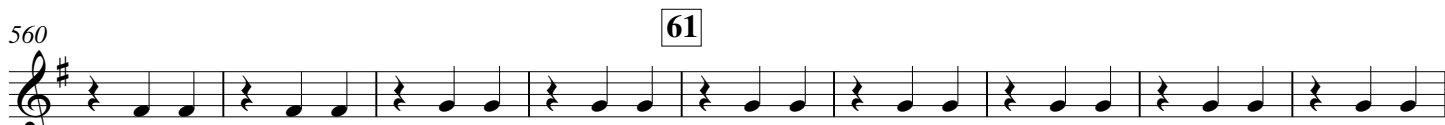
508

ff *fff*

Desserts 1 - Crêpes Suzette

Pancakes with a Butter, Orange and Grand Marnier Sauce

Tempo di Valse $\text{♩} = 60$



661

670 67

679

684

Desserts 2 - Crème Brûlée

A Rich Custard with a Crust of Caramelized Sugar

Allegro moderato ♩ = 132

68 16 69 16 70 6 71 8 72 8 73

751

764 74 2 2

774 *mf* 2 *f espress.* 75 2

785 2 *f*

792 *rall.*

Desserts 3 - Tarte Tatin

A caramelized apple tart that is baked with pastry on top and then inverted for serving

Presto ♩ = 144

7 7 76 8

sf *sf*

822 **77**

f

827

sf *f*

832

837 **78**

sf *f*

842

847 **79**

852 **80** **81** 4 9

ff

869 **82**

874 **83**

879

ff

884 **84**

f

889

sf *f*

894

897

sf