

Alain SOUCHON

B \flat Bass

Arr. Maxime LEGAULOIS

$\text{♩} = 152$ $\text{♪} = \text{♩}$ $\text{♩} = \text{♩}$ $\text{♩} = \text{♩}$ "Quand j' serai K. O."

mf

A *Ossia*

mf

mf

B *Ossia*

mf

C *Ossia*

mf

Ossia

mf

D *Ossia*

mf

Ossia

mf

66 *p* *f*

F ♩ = 108 Straight "Foule sentimentale" **G** *mf*

79

H *mf*

89

94 *mf*

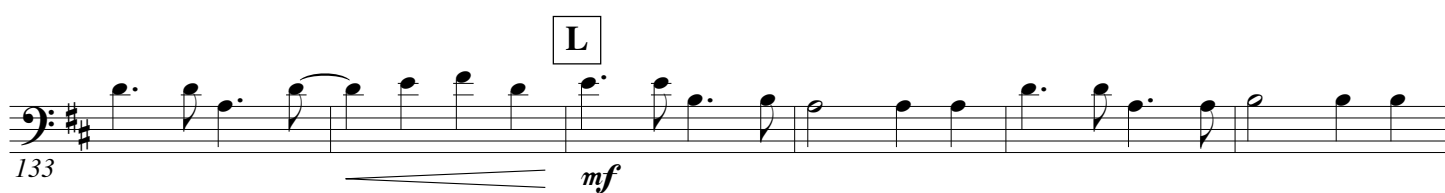
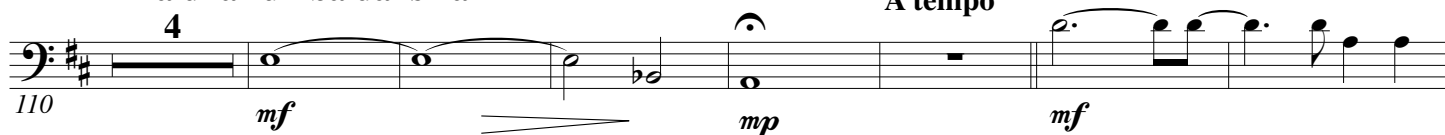
I *mf*

J ♩ = 116 *f*

3.

- B \flat Bass -**"Y'a d'la rumba dans l'air"**

A tempo

K**O** $\text{♩} = 92$ **"Papa Mambo"**

