

Alain SOUCHON

B \flat Bass

Arr. Maxime LEGAULOIS

$\text{♩} = 152$ $\text{♪} = \text{♩}$ $\text{♩} = \text{♩}$ $\text{♩} = \text{♩}$ "Quand j' serai K. O."

8 3

mf

A *Ossia*

17 *mf*

24

B *Ossia*

31 *mf*

C *Ossia*

38

Ossia

45

D *Ossia*

52 *mf*

Ossia

59 *mf*

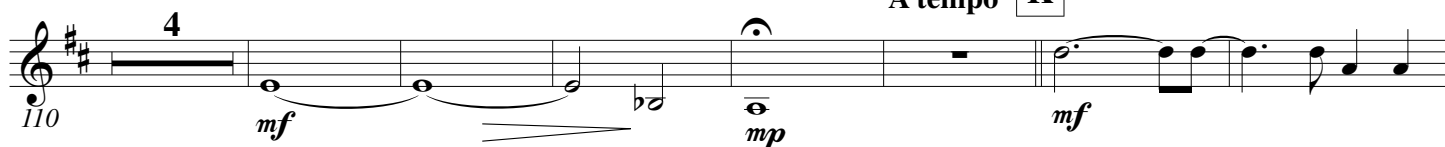
E



3.

- B \flat Bass -**"Y'a d'la rumba dans l'air"**

A tempo

K**L****M****N****O** $\text{♩} = 92$ **"Papa Mambo"**

