

# The Fall of Fort St. Elmo

Euphonium in B♭

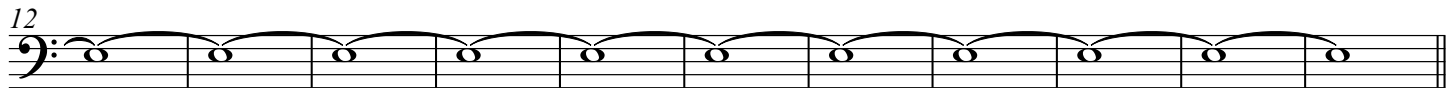
Ray SCIBERRAS

Lento ♩ = 55  
staggered breathing



*p*

**A**



*>*

**B** Più mosso ♩ = 61 molto rit.

**C** Tempo primo ♩ = 55



*mp* < > *mp* <

*f*



molto rit.

**D** A tempo ♩ = 55

**E** Moderato ♩ = 100



*p*

*mp* >

*f*

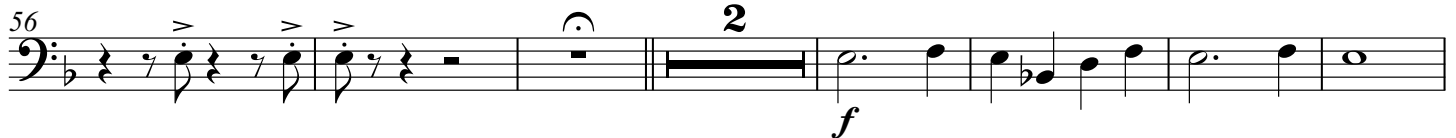
**F**



*fp* <

*f*

molto rit. **G** Allegro ♩ = 120



*f*



**H**



9

< *ff*

Euphonium in B $\flat$ 

88 *f*

94 *fp* < *f* *fp* < *f*

100

105 *dim.* *rall.* **I** Cadenza **J** *Meno mosso* ♩ = 92 *fp* <

116 *f* *fp* < *f* *f* *ff* **K** *Agitato* ♩ = 120

122 *f* *fp* < *fp* < *fp* < *fp* <

134 *p* *staggered breathing* *rall.*

142 *mp* *Andante* ♩ = 70 *p* **M**

148 *molto rall.* *A tempo* *mp* **N**

154 *p* *mp* **O**

## Euphonium in B♭

3

164

*mf* *f* 3

171

*molto rall.* **P** *A tempo*

178

3

**Q** Allegro ♩ = 120

184

*mp* *f* 3 *mf* *f* *ff* 3 3 **R**

192

3 3 3 *f*

199

*f* *fp* *f* *fp* *f* *f* *f*

206

*fp* *f* *fp* *f*

212

*dim.*

**S** Lento ♩ = 55 **T**

*rall.* *staggered breathing*

217

*p*

227

*mf*

232

*ff* 3 3 3 3