

The Fall of Fort St. Elmo

Trombone in B \flat 1

Ray SCIBERRAS

Lento ♩ = 55 **A** **B** **Più mosso** ♩ = 61 **molto rit.**

C **Tempo primo** ♩ = 55 **D** **A tempo** ♩ = 55

E **Moderato** ♩ = 100 **F** **G** **Allegro** ♩ = 120

H

ff **f** **fp** **f**

mp **mp**

f **molto rit.** **3** **2** **4** **5** **9** **3/4** **5/4** **4/4** **3/4**

29 37 47 57 66 75 90 96 100

Trombone in B♭ 1

rall.

I

Cadenza



J Meno mosso ♩ = 92

K Agitato ♩ = 120



L

rall.



M Andante ♩ = 70

molto rall.

N A tempo

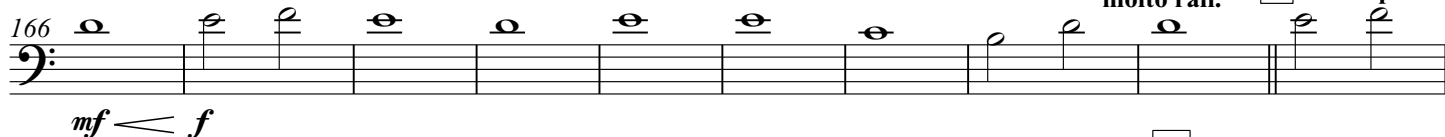
O



mp

molto rall.

P A tempo



mf < f

Q Allegro ♩ = 120



R



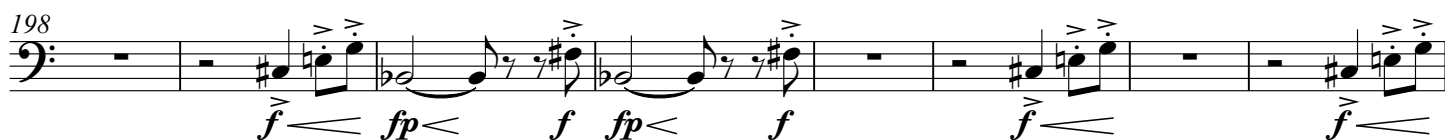
ff 3

3

3

3

f



f < fp <

f fp <

f fp <

f

f <

f <



fp < f

fp < f

f

f

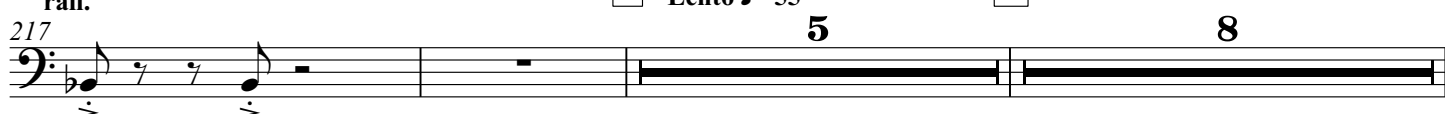


dim.

rall.

S Lento ♩ = 55

T



5

8



ff

3

3

3

3