

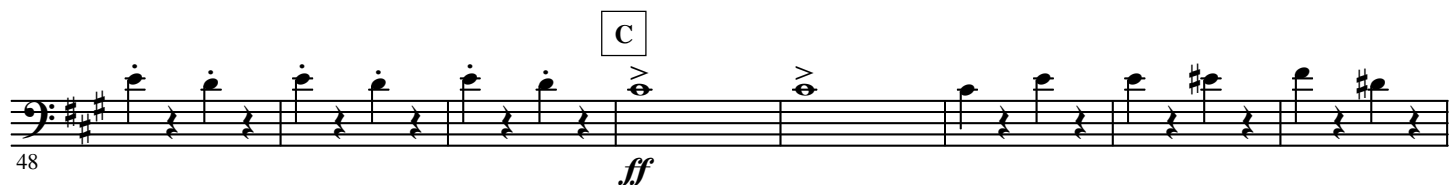
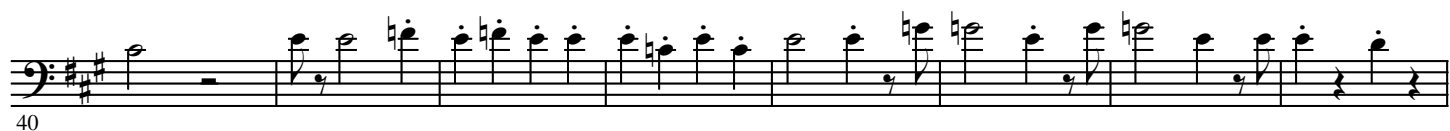
# B♭ Trombone 1

# CARNIVAL OVERTURE

Antonin DVORAK Op. 91

Arranged by José SCHYNS

Allegro ♩ = 132



187

196

L 13 M 12 rit.

226

N Andante con moto  $\text{♩} = 92$  O 16 12 Muted P cue Harp

*pp*

259

268

ritard. Q Tempo I $^\circ$  Allegro  $\text{♩} = 132$  Play Open R 13 16

*f* *fz*

302

S 15 T 12 U 12 V 12 W  $\text{♩} = 132$  *ff*

355

*f*

362

X 2 *f*

371

*ff* *mf*

379

Y 3

- B $\flat$  Trombone 1 -

394 *ff*

The image shows a single musical staff for the 394th measure. The staff is in bass clef with a key signature of two sharps (F# and C#). The measure is marked with a forte dynamic (*ff*). The notation includes a sequence of eighth and sixteenth notes, some beamed together, and rests. A box containing the letter 'Z' is positioned above the first few notes. The measure concludes with a final note and a repeat sign.

410

A' B'

*f* *ff*

The musical score for the bass line of 'The Rose Tree' is shown. It begins with a treble clef and a key signature of one sharp (F#). The first measure is a whole rest, followed by a series of eighth and sixteenth notes. The score is divided into two sections, A' and B'. Section A' starts with a forte (*f*) dynamic and ends with a fortissimo (*ff*) dynamic. Section B' continues the melody with various note values and rests. The score is numbered 410 at the beginning.

445

453



461

E'

*fff*

469

*ff*

477

F'

485

493

G'

502

Poco più mosso

H'

*fff*

511

*fff*

523

*f*

*fff*