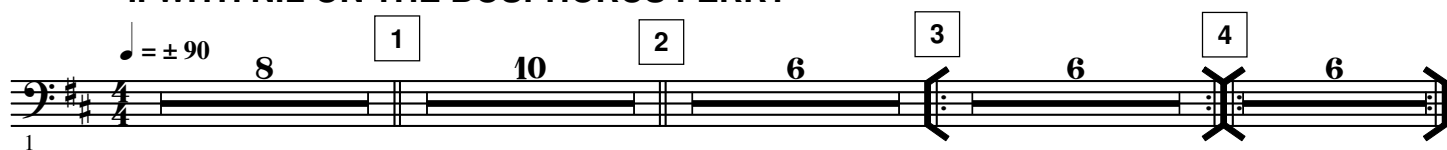


E♭ Bass

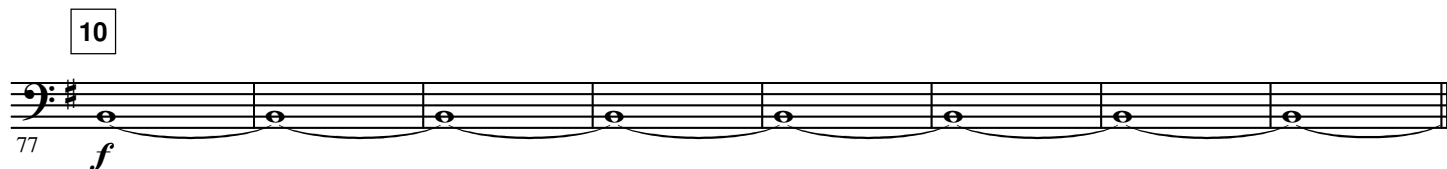
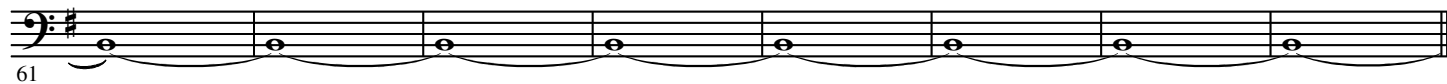
KEYIF

Hardy MERTENS

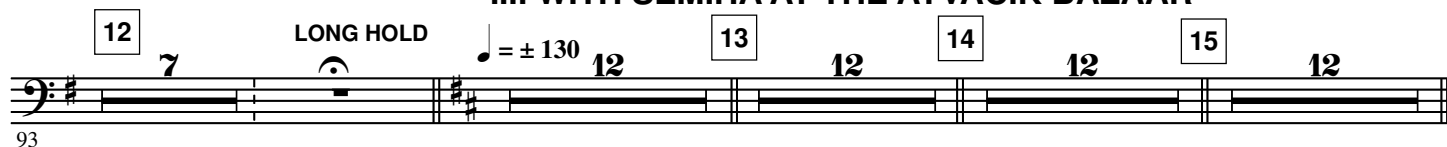
I. WITH NIL ON THE BOSPHORUS FERRY



♩ = ± 60 II. WITH FLAVIA AT THE SULTANAHMET MOSQUE



III. WITH SEMIHA AT THE AYVACIK BAZAAR



16 12 17 12 18

149

mf

177

19

183

ff

190

20 SPEED UP

196

p

21 ♩ = ± 160

201

ff

22

208