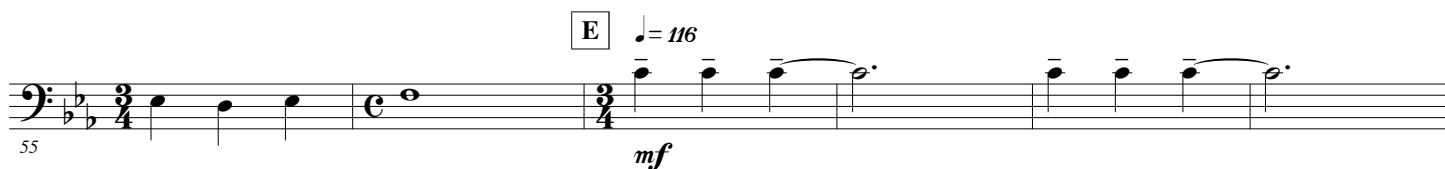
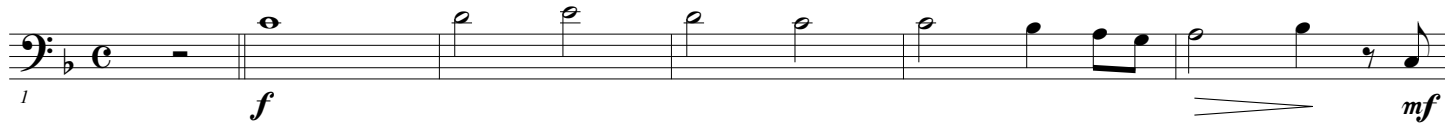


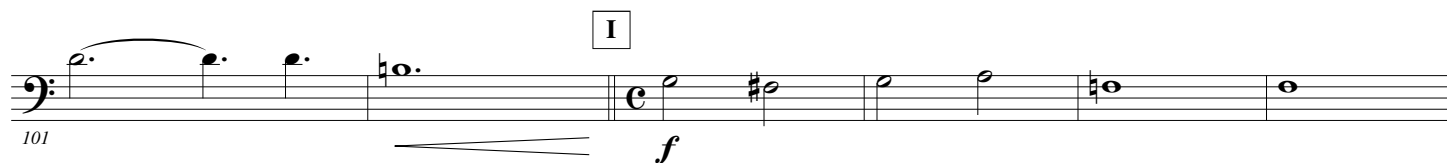
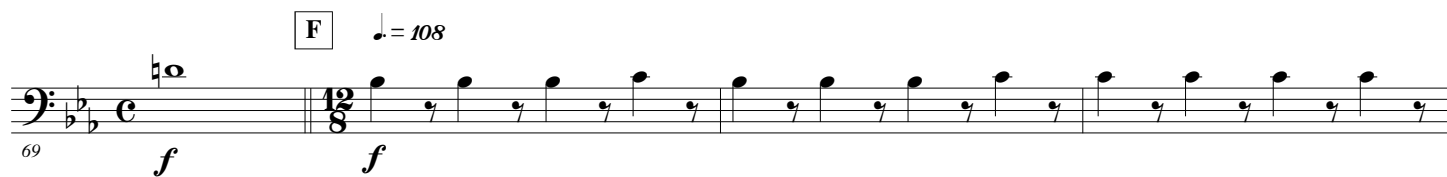
B \flat Trombone 2

Michel SARDOU

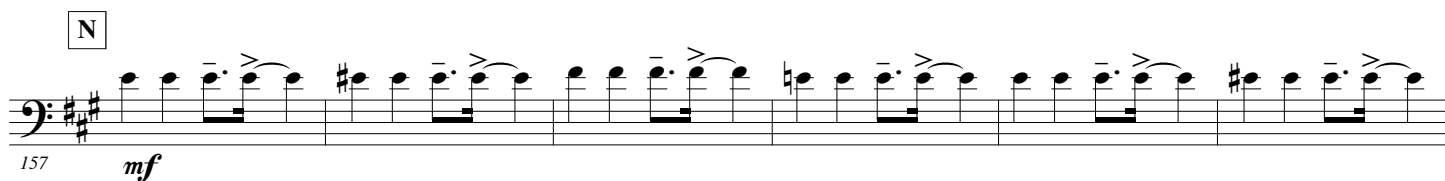
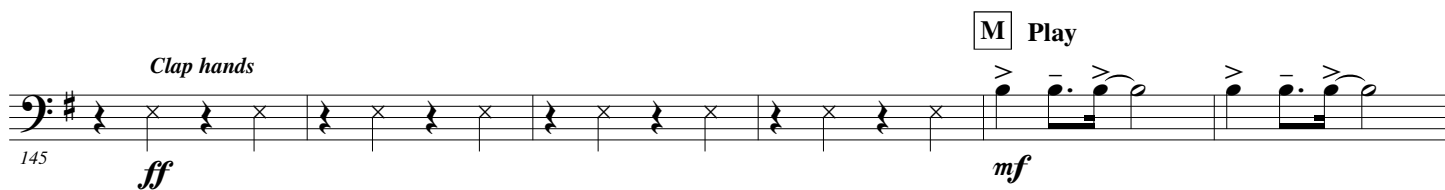
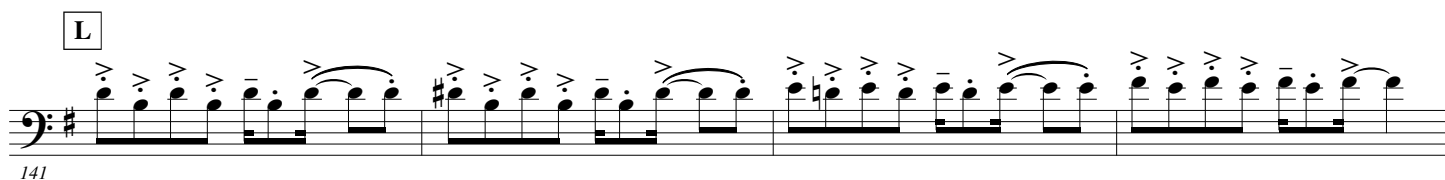
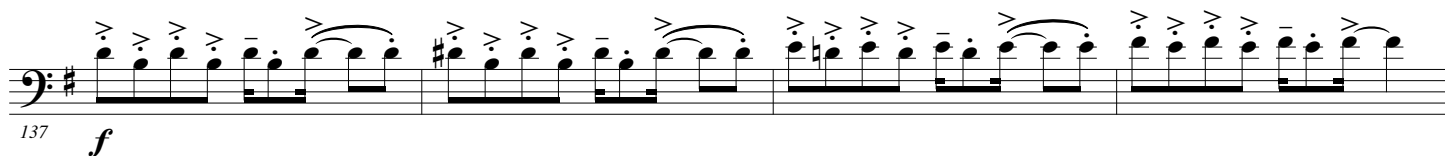
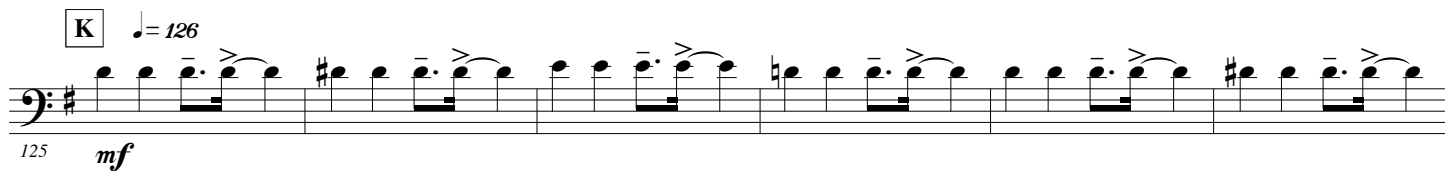
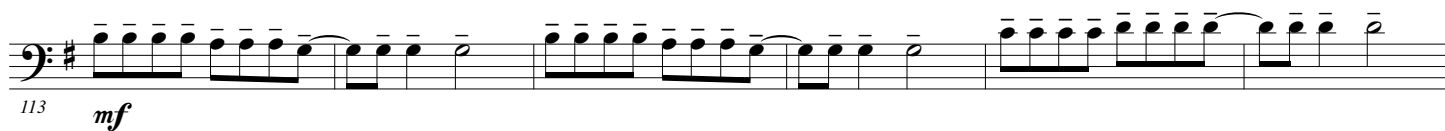
Arr. Maxime LEGAULOIS

$\text{♩} = 80$ "La maladie d'amour"





"Etre une femme"



"Le rire du sergent"

163

O $\text{♩} = 120$
3

f

171

177

f

P

2

mf *f* *mf*

192

Q

199

mf

206

mf *f*

R

2

mf *f* *mf*

220

227

f