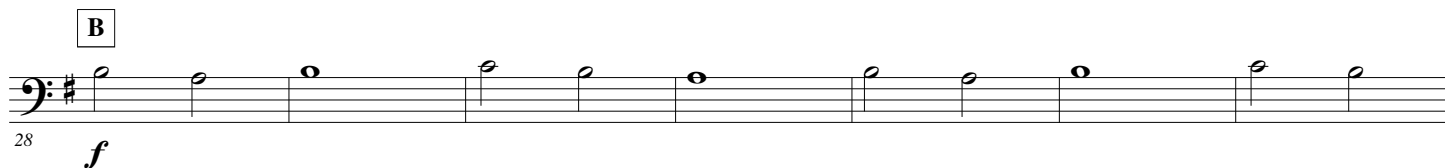
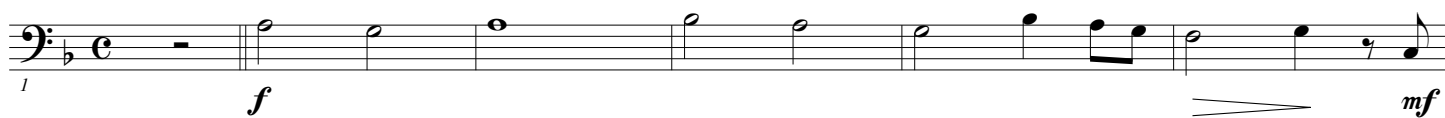


B \flat Trombone 3

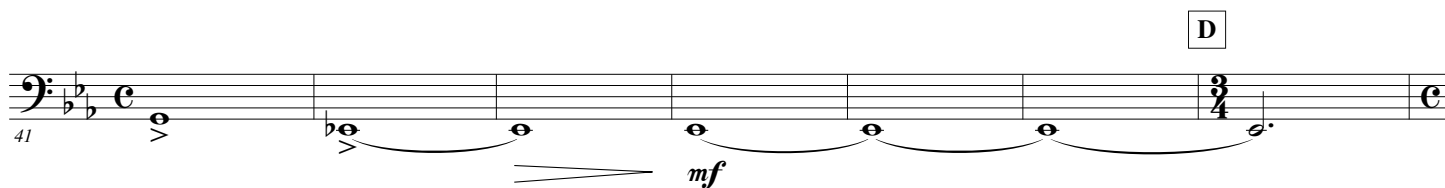
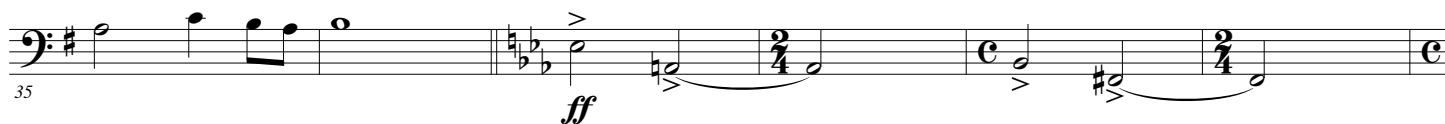
Michel SARDOU

Arr. Maxime LEGAULOIS

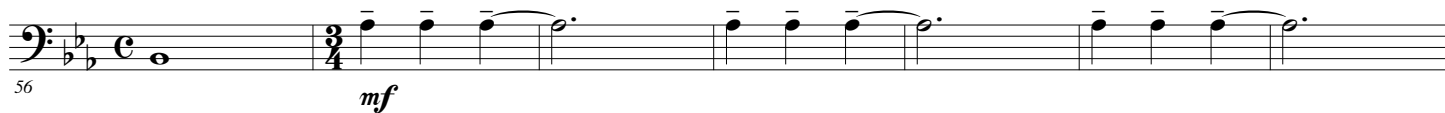
$\text{♩} = 80$ "La maladie d'amour"



C $\text{♩} = 92$ "Les lacs du Conemara"



E $\text{♩} = 116$



63

f

F ♩ = 108

70

f

74

78

82

2

G ♩ = 84

86

f

H

93

mf

97

I

101

f

J ♩ = 100

107

mp

11

"Etre une femme"

3.

- B \flat Trombone 3 -K $\text{♩} = 126$ 