

Arr. Maxime LEGAULOIS

Arr. Maxime LEGAULOIS

$\text{♩} = 80$

1

10

17

24

31

C ♩ = 92

37

44

52

59

2.

F

$\bullet = 108$

67

f

f

12/8

72

76

[illegible]

G

$\bullet = 84$

84

2 2

f

H

90

mf

97

I

[illegible]

J

$\bullet = 100$

108

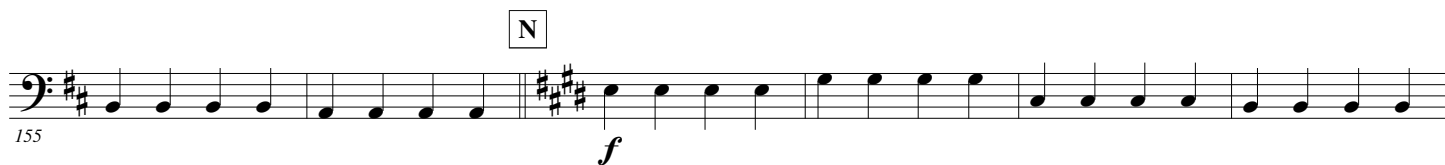
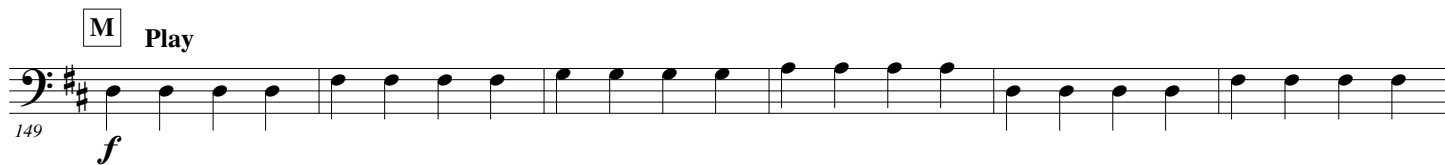
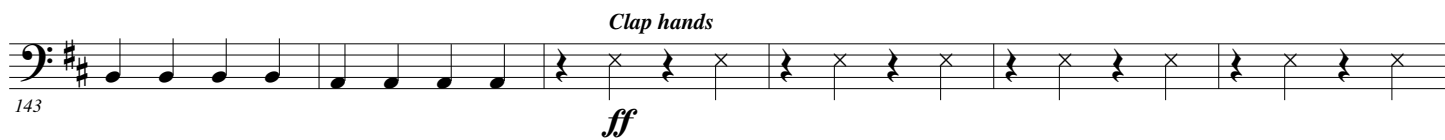
mp

13

3.

- E \flat Bass -

K $\text{♩} = 126$ "Etre une femme"



P



Q



R

