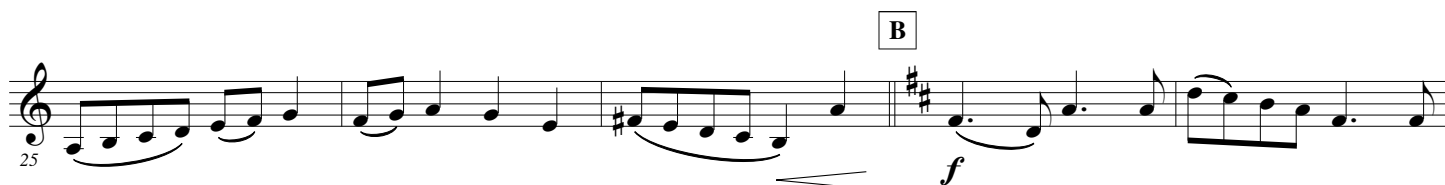
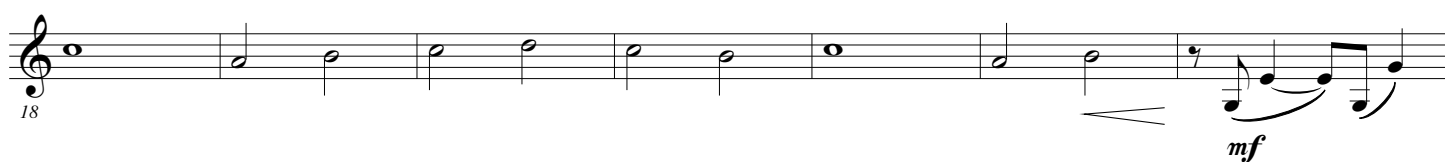
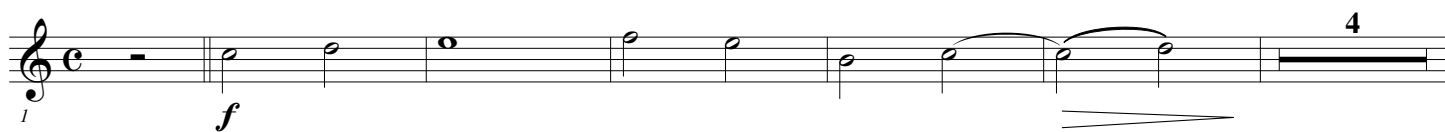


Michel SARDOU

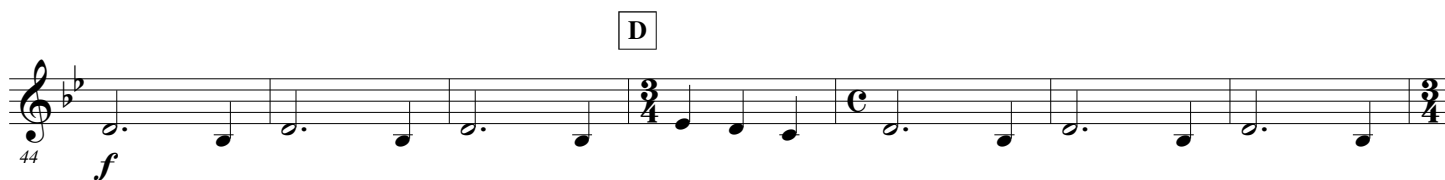
E \flat Horn 1

Arr. Maxime LEGAULOIS

$\text{♩} = 80$ "La maladie d'amour"



C $\text{♩} = 92$ "Les lacs du Conemara"



2.

- E \flat Horn 1 -

65 *mf* *f* *f* **F** ♩ = 108

71

75

79

83 *f* **G** ♩ = 84

87

93 *mf* **H**

97

103 *f* **I**

109 J ♩ = 100 "Etre une femme"

115

121 K ♩ = 126

127

132

140 L Clap hands

149 M Play

157 N

161 O ♩ = 120
4

"Le rire du sergent"